

# CHILDHOOD STUDIES







## About us

**There are few things more rewarding than watching a child blossom because of your actions. Whether you're helping them to take their very first steps, watching them master their ABCs, or supporting them to tackle their fears, every development is a sign of a job well done.**

You'll have a lot of responsibility and you may find yourself with aching feet and hair full of glitter by the end of the day, but if you want job satisfaction, a career in education and early years could be just what you're looking for.

To succeed, you'll need to be compassionate, patient and nurturing. You'll also need to genuinely enjoy working with children and encouraging them to try new things. The other skills and knowledge you'll need, we can teach you. You'll learn how to recognise what each individual child requires to thrive and how to keep children safe, healthy and happy.

Our tutors have extensive experience, both out in the sector and of teaching students. They also have valuable links to employers, so they can help you to gain a greater insight into different careers and decide which path is right for you.

The best way to learn is to practise, so you'll gain vital practical experience, whether it's in a private childcare facility, early years provision or in a primary school.

In short, The Manchester College can help you to strengthen your innate talents and abilities, leaving you ready to embark on a successful, fulfilling career.







FOR

CHILDHOOD

STUDIES

**If you've obtained the necessary entry requirements prior to joining us or during your time in our Centre of Excellence, you may be invited to progress into our Industry Excellence Academy for Childhood Studies.**

The programmes of study within this Academy have been co-developed with industry partners, meaning you'll benefit from courses aligned with current industry demands and take part in a range of industry-level activities and lessons.

You'll benefit from masterclasses and lessons delivered by industry experts, and visits from guest speakers at the forefront of the industry. You'll also have the opportunity to take part in industry-standard 'live briefs', that will see you working on similar projects to those you'll face once you begin your career in the childcare sector.

Education and Early Years is a competitive sector and experience can help to give you an advantage over other job applicants. You'll complete a placement with an industry employer through our Industry Excellence Academy.

This placement will be 2 days per week and, in many cases, you'll be matched with a mentor from your chosen industry to support you along the way.

Once you complete your journey through our Industry Excellence Academy, you'll have gained the qualifications, experience and skills you need to take the next steps towards an amazing career.





## Study for a Technical Level (T Level) qualification in Education and Early Years

**T Levels are a new two-year technical programme that provide you with a high-quality alternative to A Levels.**

They have been developed in collaboration with employers, and combine theory, practical and classroom learning with a minimum 45 day industry placement. If you opt to take a T Level you will spend 20% of your time on an industry placement and 80% in the classroom.

After completing the course you can progress directly into work, on to a Higher Apprenticeship or even move on to study a university degree, as T Levels are awarded UCAS points.

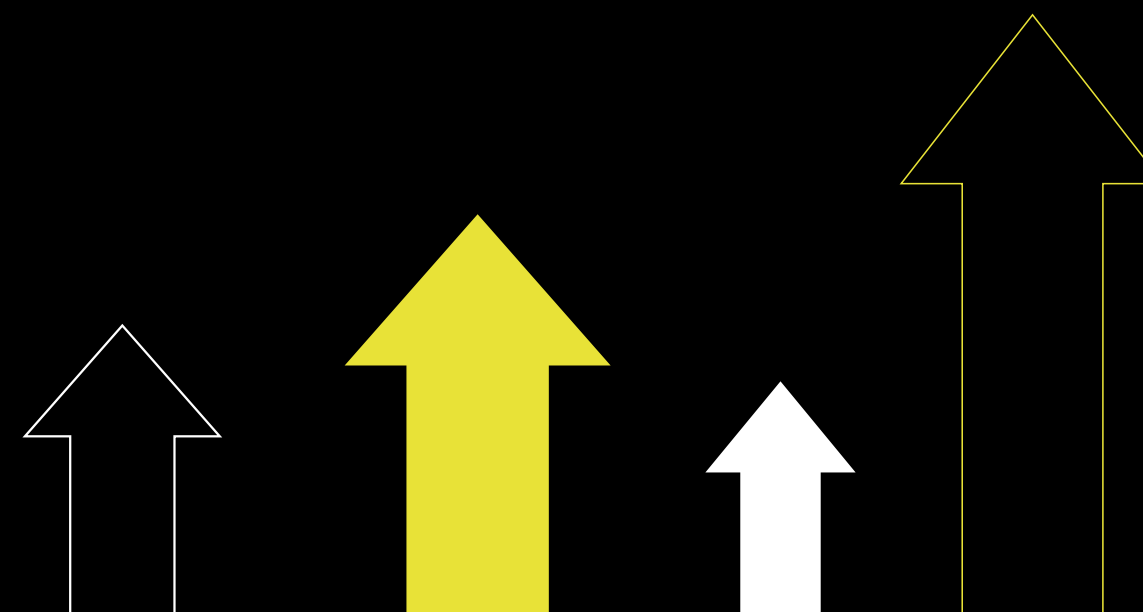


## T Award

Those successful in gaining a place on a T Level will be eligible for the 'T Award', a package of benefits that includes:

- £300 per year bursary\*
- Access to industry standard laptop\* (as appropriate)
- Opportunity to take part in exciting college-wide competitions
- Minimum 20% delivery by industry experts
- Minimum 45-day industry placement
- Free branded work wear
- Masterclasses
- Digital upskilling
- Bursary incentive if progressing to UCEN Manchester
- Guaranteed progression to a Higher Education course at UCEN Manchester
- Use of industry based software
- And much more.

*\*Subject to requirements including 95% attendance, positive attitude and grade profile.*



# Courses

## Level 3 | T Level | Education and Early Years (Assisting Teaching) Openshaw | Two Years

All students will develop the knowledge and skills of an education and early years professional, including supporting the teacher to enhance children’s education, individually and in groups. You’ll understand how to plan, provide and review educational opportunities in collaboration with teachers and other adults and learn about safeguarding and promoting the health, safety and wellbeing of children and young people.

You’ll gain the skills to recognise, adapt and respond to individual children’s needs, including those with SEND, to support development and access to the curriculum. Once you complete your course you will be ready for a career in roles such as Special Educational Needs (SEN) Teaching Assistant, Teaching Assistant or Teacher Learning Mentor.

## Level 3 | T Level | Education and Early Years (Educating Early Years) Openshaw | Two Years

All students will develop the knowledge and skills of an education and early years professional, including supporting and promoting children’s play, development and early education, developing relationships with children to facilitate their development.

You’ll understand how to plan, provide and review care, play and educational opportunities to enable children to progress and learn about safeguarding and promoting the health, safety and wellbeing of children.

Communication is key as you will be working in partnership with colleagues, parents, carers and other professionals to support children’s development. Once you complete your course you will be ready for a career in roles such as Nursery Practitioner Special Educational Needs and Disabilities Co-ordinator (SENDCO), Team Leader or Room Leader.

For those who don’t meet the entry requirements and would still like to pursue a T Level, there is the option of a one-year Level 2 T Level Foundation Year as part of our Industry Excellence Academy for Childhood Studies.

This Foundation Year will allow you to gain a qualification and move on to study one of our T Levels in Education and Early Years the following year.

## Level 2 | T Level Foundation Year | Education and Early Years (Working in Early Years and Primary Settings) Openshaw | One Year

Are you passionate about working with children? This course has been developed in collaboration with employers so that the content meets the needs of industry and prepares you for the Level 3 qualification.

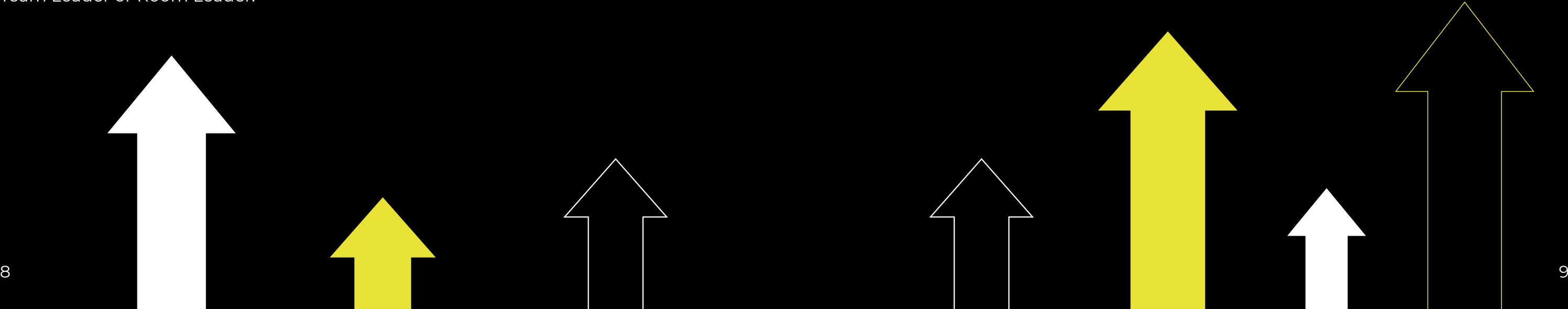
You will learn the essential skills and knowledge of the early years and education sector including child development, play and learning, exploring legislation, the role of the childcare practitioner, nutrition and physical development and physical activity.

# Jump Start To T Levels

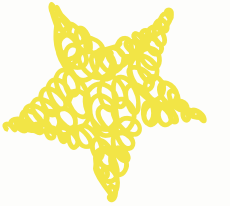
Both our T Levels and T Level Foundation Year require you to complete our Jump Start to T Levels programme as an entry requirement.

This programme is a two-week introduction to our Industry Excellence Academy, T Level and T Level Foundation Year programmes, where you can meet your tutors and experience what studying a T Level at The Manchester College is like.

To apply or find out more about our T Levels and T Level Foundation Year programmes, visit our Industry Excellence Academy website: [industry-excellence.tmc.ac.uk/t-levels](https://industry-excellence.tmc.ac.uk/t-levels)







**We passionately believe in helping you reach your ultimate goal, focusing on your future employability and developing the skills you need to have a successful career.**

**If you're aged 16-18, our Centre of Excellence for Childhood Studies is set up to help you do just that!**

### **Study Programme**

You'll join our Centre of Excellence for Childhood Studies when you enrol on any of our qualifications from Level 1 to Level 3.

If you haven't already obtained a Grade 4 GCSE or the equivalent Functional Skills at Level 2 in English or maths, you'll study to achieve this level of qualification alongside your course. If you have a Grade 3, you will study a GCSE resit.

Alternatively, if you have anything lower than a Grade 3 then we will help you to develop your English and maths through Functional Skills.

### **Employability**

To prepare you for your future career, you'll take part in a range of 'employability' activities to equip you with the knowledge and experience of careers available to you.

### **Employability Sessions**

You'll be assigned an Employability Tutor and will take part in dedicated 'employability' sessions which will help equip you with the skills you'll need to thrive in the workplace.

### **Work Experience Placement**

If you join our Centre of Excellence you'll spend a minimum of six to 375 hours working in private nurseries and primary schools that have been rated 'Good' or 'Outstanding'. If you join our Industry Excellence Academy you'll complete a minimum of 105 hours.

You'll be caring for children aged from a few months old up to seven years old, assisting with day-to-day tasks and shadowing staff to develop your skills and broaden your knowledge.

### **Industry Placement**

You may be able to apply for an industry placement offering up to 375 hours of experience with a leading employer.

An industry placement gives you in-depth knowledge of the industry, allows you to gain hands-on experience and gives you an insight into career pathways.

With a placement, you're taking that all important first step onto the ladder; many of our students even go on to gain paid employment with their industry placement employer at the end of the year.

### **Work Related Activity**

You'll learn more about the industry by taking part in a wide range of activities, visiting locations you could be working in and hearing directly from experts.



# Courses

**If you have the passion, we can help you to gain the skills you need for a successful career working with children and young people.**

## Level 1 | Caring for Children

### Openshaw | One Year

Our Level 1 Diploma is an ideal introduction to Childhood Studies if you want to explore the skills needed to care for young people. It'll help you to build the foundations for further study and a rewarding career in childcare.

The tutors will share their experiences and research on how children grow and develop. You'll discuss how to respect and value children's feelings and tackle challenging behaviour.

You'll also gain a greater understanding of how to use play-based activities and crafts to support early learning and how to encourage children to enjoy healthier lives. This course also covers many of the practical health and safety aspects you'll need to be aware of when you work with children.

## Level 2 | Early Years Practitioner

### Openshaw | One Year

This course will prepare you for the roles and responsibilities associated with being an Early Years Practitioner so they can ensure the safeguarding, protection and wellbeing of the babies and young children that they are looking after.

As part of this qualification you will gain knowledge and understanding of various aspects of childcare that you can apply in the workplace such as preparing children for a school environment, supporting children with special educational needs or disabilities and encouraging children's development through purposeful play and educational activities.

## Level 2 | Supporting Teaching and Learning

### Openshaw | One Year

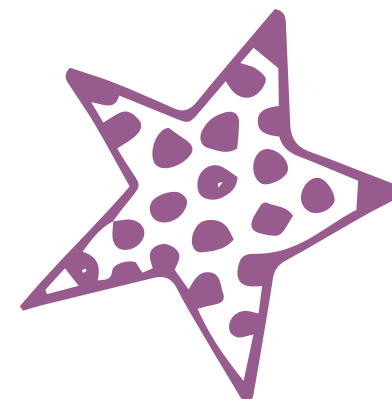
If you are interested in gaining the knowledge and skills needed when working directly with children and young people in school or college environments, then this is the course for you.

This course covers a wide range of areas including children and young people's development, supporting children and young people's positive behaviour and safeguarding children and young people.

## Level 3 | Childcare and Education

### Openshaw | Two Year

This course will prepare you for a career as an Early Years Educator, enabling you to work with children from birth to five years old. You will also gain knowledge of working with children aged five to seven years old. Study topics including child development, health and wellbeing, understanding children's additional needs, play and learning, assessment and planning, and emergent literacy and maths.





# Courses for Adults

If you're over 19, we offer a wide range of courses in areas such as childcare, early years education and supporting teaching and learning starting throughout the year at our Harpurhey and Wythenshawe campuses. These can help you to upskill and strengthen your CV, whether you want to start a new career or progress in your current role.

At The Manchester College we believe that finances shouldn't be a barrier to your success, so if you have any questions about course fees, finance or funding then please contact [careers&welfare@tmc.ac.uk](mailto:careers&welfare@tmc.ac.uk) or you can find out more about the support available by listening to our podcasts on funding at [tmc.ac.uk/podcast](https://tmc.ac.uk/podcast) or by visiting [tmc.ac.uk/study-with-us/fees-finance-funding/19](https://tmc.ac.uk/study-with-us/fees-finance-funding/19)

Caring for Children | Level 1

Preparing to Work in Schools | Level 1

Early Years Practitioner | Level 2

Supporting Teaching and Learning | Level 2

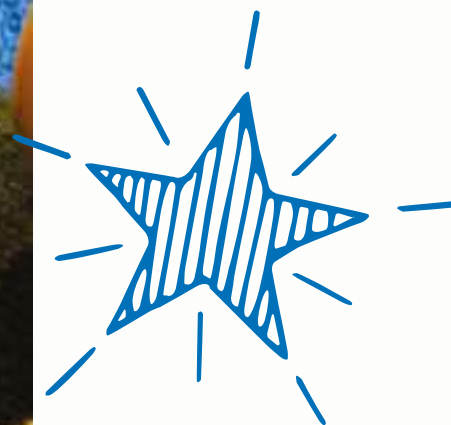
Supporting Teaching and Learning | Level 3

Childcare and Education (Early Years Educator) | Level 3

For more information or to apply visit [tmc.ac.uk/childhood-studies/](https://tmc.ac.uk/childhood-studies/)

ADULT

COURSES





# SUPPORTED LEARNING

Promoting independence  
through accessibility and  
inclusion

Have you received learning support in the past? Do you have an Education, Health and Care Plan or an identified Special Educational Needs or Disabilities (SEND) need? Our Supported Learning team can help students with SEND to achieve their aspirational career goals.

We provide a highly personalised offer for students to create a supportive learning environment for all. Whatever course you choose to study, our provision is specifically designed to support you on your journey to independence and into further education or employment.

Find out more about how we can help you:  
[tmc.ac.uk/supported-learning](https://tmc.ac.uk/supported-learning)





# We'll help you Accelerate2industry

As soon as you enrol on a Childhood Studies course, we'll start talking to you about the opportunities that could be open to you in the future.

To guide you through the process and help you achieve your aspirational career goals, we've teamed up with our higher education partner, UCEN Manchester, on an exciting initiative.



Ultimately, the aim of Accelerate2Industry is to help you progress into either, higher study, higher education with UCEN Manchester, or your chosen career.

The initiative runs throughout the academic year and there are three distinct phases:

## Step 1 - Plan >>>

Find out the options available to you at the end of your study programme.

## Step 2 - Pass >>>

Your tutors will speak to you about what you're planning on doing next year and support you to secure the grades you need to move on to the next phase of your journey.

## Step 3 - Progress >>>

Your tutors will ensure you have all of the information and support you need to re-join us in September or progress on to university, employment or an apprenticeship.

## Progressors Award >>>

Do you want to study with a higher education provider that offers something a little bit different and delivers courses that are career focussed and lead you straight into employment? If so, our Progressors Award is just for you.

The award is open to all Level 3 students at The Manchester College that upon completion of their course enrol onto a higher education course at UCEN Manchester. The Progressors Award is currently £200. Please check the amount, eligibility, and terms and conditions ahead of making your progressors application to UCEN Manchester during your final year of Level 3 study.



## **DEGREE LEVEL**

Once you've completed one of our Level 3 Diplomas, you may want to progress onto a degree-level qualification through our higher education partner – UCEN Manchester.

### **FOUNDATION DEGREE**

These are two-year courses, that allow you to progress onto a one-year (Top-up) degree to obtain an honours degree.

- **FdSc Childhood and Youth Studies**

### **TOP-UP DEGREE**

This is a one-year course for qualified Level 5 students to gain an honours degree.

- **BSc Childhood and Youth Studies**

For more information or to apply  
visit [ucenmanchester.ac.uk](https://ucenmanchester.ac.uk)





# Careers



## **Educational Psychologist**

**Starting salary: £25,600**

**Salary with experience: £31,500**

As an educational psychologist, you could help a child or young person going through a difficult time. They might be struggling to participate in school or suffering with mental health issues. You could help them to learn coping mechanisms and start to enjoy their life again.



## **Early Years Practitioner**

**Starting salary: £25,000**

**Salary with experience: £36,900**

Do you want to work with children from birth to five years old? A career as an early years practitioner could be just what you're looking for. Childcare is closely linked to the science of children's health and psychology, so there's lots to understand and learn about. At the same time, you could easily find yourself covered in paint and glitter, so bags of energy and a sense of humour are essential! Sometimes tough, often joyful, childcare is a rewarding and important career.



## **Primary School Teacher**

**Starting salary: £25,000**

**Salary with experience: £36,900**

If you want to make a real difference to children's lives, and watch them blossom under your care, why not become a primary school teacher? You'd develop lesson plans in line with curriculum objectives, build a relationship with pupils and work to create a positive learning environment in the classroom. You'd be helping to give children the best chance of fulfilling their potential, by supporting them to develop age-appropriate skills and social abilities.





# Meet the team



**Emma Rutter**  
**Head of Department**

Emma joined the College as a nursery officer in our on-site nurseries back in 1999. She then moved to the teaching side in 2004 and progressed into the management team in 2013. Emma also does a lot of charity work. Her previous experience includes being a safeguarding co-ordinator for a charitable organisation and she has also been a lead volunteer for a youth organisation for the last 26 years.



**Angela Mahon**  
**Department Team Leader**

Angela joined the College in 2014 as a tutor and first aid trainer for the Childhood Studies department and then became the Department Team Leader. Angela has a wealth of experience in early years settings across England, as both a practitioner and a manager.



**Nicola Dillon**  
**Tutor**

Nicola started at the College in 2018. She has more than 20 years' experience working in a range of different early years settings, educational establishments and out in local communities. Prior to becoming a tutor, Nicola was a children's centre district lead, which saw her managing a number of centres, and working with families and children under five years old.



**Gillian Taylor**  
**Tutor and Lead Internal Moderator**

Gillian joined the college in 1997 as a tutor and assessor. Prior to becoming a tutor, she has many years experience working in a range of different settings as a teaching assistant, early years practitioner and as an assistant manager.



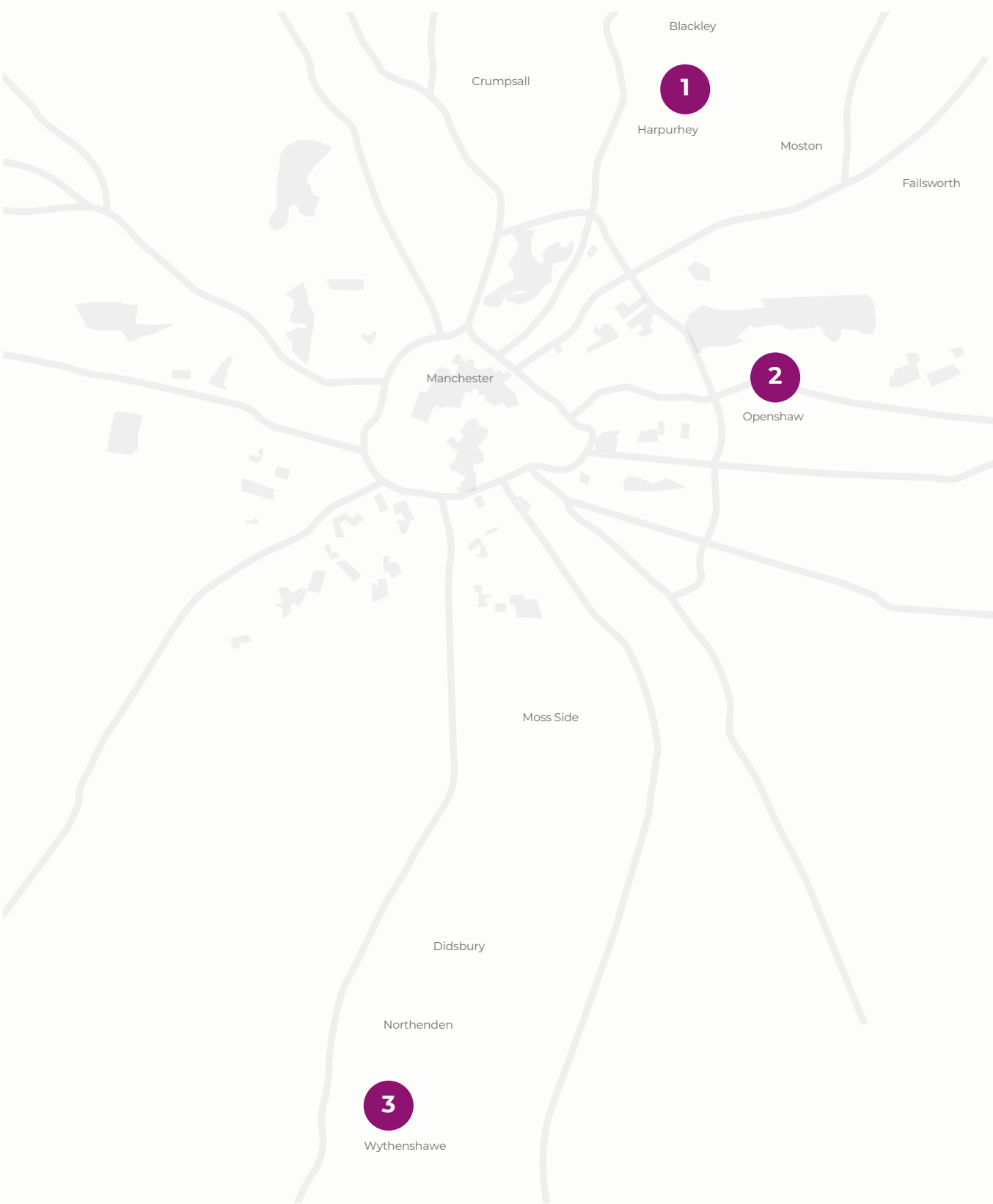
# Our locations

Our Childhood Studies courses are offered at campuses across Manchester all of which are well served by public transport. So, wherever you live, you're not far from starting your journey towards a career working with children and young people.

Our Level 1 courses for 16 to 18-year-old students are taught at our Wythenshawe, Harpurhey and Openshaw campuses, while our adult students will study at either our Harpurhey Campus or Wythenshawe Campus.

Our Industry Excellence Academy for Childhood Studies, which includes our Level 2, Level 3 and T Level courses, is based at our Openshaw Campus. So, students who progress from a Level 1 course will benefit from using the amazing new facilities on offer at this site.

Working with children can be challenging but also incredibly rewarding. In our industry standard facilities you'll learn the skills you need to meet every child's needs and have a successful career working with young people.



- 1 Harpurhey Campus**  
Rochdale Road, Harpurhey, Manchester, M9 4AF
- 2 Openshaw Campus**  
Ashton Old Road, Openshaw, Manchester, M11 2WH
- 3 Wythenshawe Campus**  
Brownley Rd, Wythenshawe, Manchester, M22 9UH





## What our students say

My 500 hours of work placements have really helped me enhance my learning and made my assessments easier to complete. My tutors always pushed me for distinctions and now I am on target to achieve that. Without my tutors' help, I wouldn't have been able to achieve this. Studying at The Manchester College has really made me confident. My speaking skills have really developed, which will help me to become a primary school teacher. My tutors have really inspired me and watching them teach my class sparked a passion for me to get into teaching.

---

Natasha Mohammad, Level 3 Childcare and Education

When I arrived at The Manchester College, I didn't have any plans to go to university. But once I started the course, my tutors inspired me by giving me the skills and confidence I needed. They explored all my career options and even gave me back-up career prospects to pursue.

---

Georgia Darbyshire, Level 3 Childcare and Education





# How to apply

Applying to study at The Manchester College is really easy. Just follow these steps and you will be on your journey to amazing in no time.



## Step 1

Visit **tmc.ac.uk**



## Step 2

Choose a course, apply at an open event, online or mobile



## Step 3

Receive a conditional offer



## Step 4

Book to attend an interview



## Step 5

Register to attend our New Student Welcome Day in July (16-18)



## Step 6

We will invite you to enrol in September after you receive your results (if applicable)

# What's Next?

## Find out more and apply

To find out more about Childhood Studies at The Manchester College and to apply scan the QR code or visit: **tmc.ac.uk/childhood-studies**



## Visit us

Join us at one of our open events throughout the year to learn more about our courses, tour our facilities, speak to our tutors and much more. To find out when our next open event is taking place and to register your place visit: **tmc.ac.uk/events**

## Stay in touch

Follow us on our social media channels:

 **The Manchester College**

 **@TheMcrCollege**

 **@TheMcrCollege**

 **@themcrcollege**

## Contact Us

Got a question about one of our courses, about The Manchester College or just need to get in touch? Contact us:

 **enquiries@tmc.ac.uk**

 **03333 222 444**





The  
Manchester  
College®  
be amazing

*The Manchester College is committed to equality of opportunity, non-discriminatory practices and supporting individual learners. This information is also available in a range of formats, such as large print, on request.*