



The
Manchester
College®
be amazing

GO FURTHER

Issue 06 | Spring / Summer 2023

Adult Education at The Manchester College

MAKE IT WORK

Ready to begin your
next chapter?

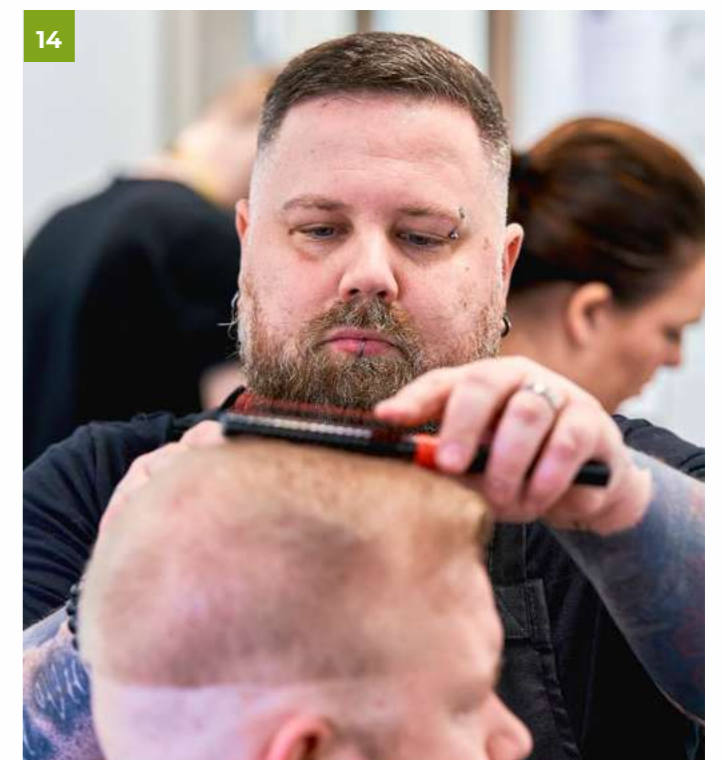
YOU CAN WITH US



Apply now
www.tmc.ac.uk/adults

CONTENTS

Introduction from Michael Walsh, Deputy Principal	4
Industry Insights	5
Finance Support	8
Meet the Tutor	10
How To... Change a Tyre	11
Student Spotlight	12
Our Courses	14
Find Your Course and Apply Online	22
UCEN Manchester - Degrees and Diplomas	24
MOL Professional Qualifications	26



HELLO,

Hello and welcome to our latest edition of Go Further, the termly magazine from The Manchester College.

This edition is full of all the information, advice and guidance you need if you are thinking about retraining for a new career or simply want to gain the skills that will help you take your career to the next level.

With an economy that is currently crying out for more highly skilled people, and so many sectors continuing to highlight a shortage of skilled workers in their industry, now could be the perfect opportunity for you to shine and get the qualification that will not only help you in securing your dream job but also increase your earnings.

In our Centre of Excellence for Adult Education we offer courses in a huge range of subject areas, from Entry Level up to Level 6, as well as Access to Higher Education diplomas. This means you'll find lots of opportunities to upskill in your chosen field or retrain for a new career, regardless of your current academic level, or your goal, in returning to education.

We know everyone's priorities and circumstances are different and that in the face of the increased cost of living finances are a priority for us all at the moment. However, there are lots of options available to support you if you make the decision to take the plunge back into education. Every year we support over 10,000 adult learners to achieve their aspirational goals. In addition to having access to the knowledge of our expert tutors, you'll benefit from the support of our experienced Student Careers Service advisors who are here to guide you through funding options, how you can access funds and offer money saving tips.

Ultimately, our courses, our tutors, and the support and advice we offer, are all aimed at helping every student achieve their full potential. Whatever your circumstances and ambition we have opportunities to fit around your life and provide the tailored support you need to succeed.

We're here to make your dream possible and to make it work for you. I hope to see you soon.



Warm regards,

Michael Walsh
Deputy Principal

INDUSTRY INSIGHTS

Have you considered what career path you want to follow after you've completed your college course?

Here at The Manchester College our adult courses are designed to support you through periods of professional growth and transition. They also provide the perfect springboard for development if you're looking to make a change and build a new skill set.

With lots of funding options available to you and a team of dedicated experts committed to guiding you through the process, there might be fewer hurdles between you and your dream job than you think.

To help you get started, we've detailed some of the industries and careers where there are currently skills shortages and a high demand for staff across Greater Manchester:

Hospitality and Catering

Are you looking for a future that offers a fun and fulfilling learning experience in an industry that's flourishing and bursting with fresh ideas and opportunities? Hospitality is an engaging, sociable working environment, with career opportunities everywhere you go! Hotels, restaurants, nightclubs and bars are just a few of the options available to you in this exciting industry.

Roles that Greater Manchester employers are currently recruiting for include:

- Kitchen and Catering Assistants
- Chefs
- Managers and Proprietors
- Bartenders
- Waiting Staff
- Receptionists
- Sales
- Customer Service.



If you're looking for a five-star Hospitality and Catering curriculum experience to help get you there then look no further. Visit our Hospitality and Catering courses on page 20.

Business and Professional

Manchester has the largest Financial and Professional Services sector outside London, and it is a key driver for economic growth in the region. Whether you want to start your own enterprise or enjoy a high-flying career with a global brand, a business qualification can give you a head-start.

Here are some roles that Greater Manchester employers are currently recruiting for:

- Customer Service
- Financial Manager
- Accountant
- Lawyer
- Solicitor
- Underwriter
- Credit Control
- Data Analyst.

If you have an interest in this sector, please visit our Business and Professional courses on page 17.

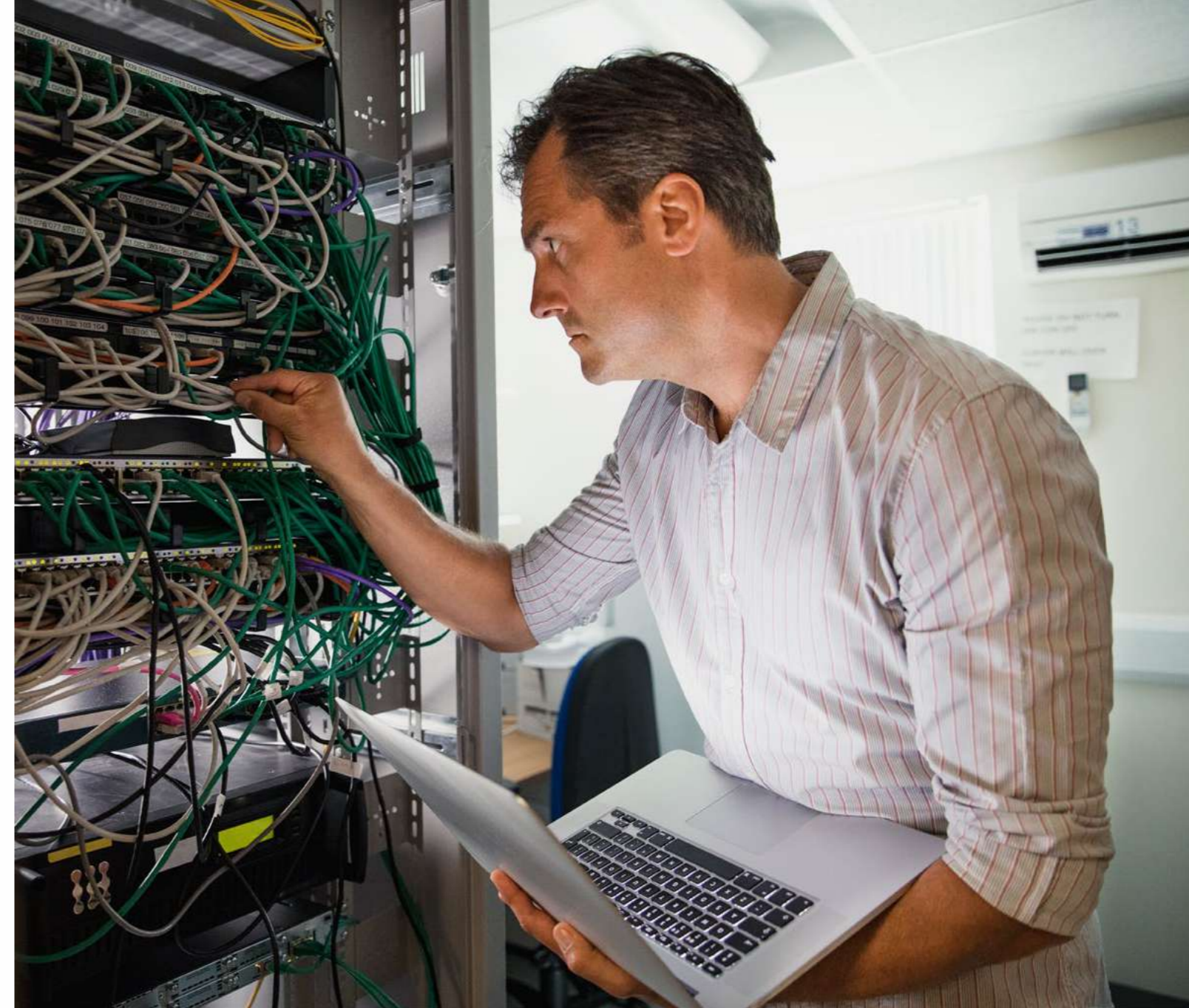
Education

With over 6000 jobs open every year in Greater Manchester, teachers, teaching assistants and trainers are always in demand in the area. Providing roles that promise competitive salaries and rewarding experiences, if you really want to influence and change lives, this is a career to focus on.

In Greater Manchester currently there are vacancies for:

- Teachers (primary and secondary school)
- Further Education Tutors
- University Lecturers
- Nursery Nurses, Assistants and Playworkers
- Headteachers.

Eager to learn more? Whether you want to develop your general expertise as a teaching assistant or focus on teaching a specific subject, you'll find a suitable option for you here at The Manchester College. Visit our Childhood Studies courses on page 17 and Teacher Education courses on page 21.



Computing and Digital

Would you like to develop software solutions, use AI to help fight diseases or protect people's finances with cyber security? You could make a real difference to businesses and communities both in the UK and across the globe.

Here are just some roles that Greater Manchester businesses are currently recruiting for:

- Web Developer
- Software Developer / Engineer
- Computer Support Specialist
- Cyber Security Engineer
- Product Manager
- Computer Programmer
- Programmers and Software Developers.

Explore our Computing and Digital courses on page 18 to further your career.

FINANCE SUPPORT

At The Manchester College we believe that finances shouldn't be a barrier to your success, so we offer access to a range of course funding opportunities. In this issue, we're shining a spotlight on the Greater Manchester Skills Fund and Free Courses for Jobs.

Free Courses for Jobs and the Greater Manchester Skills Fund

As part of the government's Lifetime Skills Guarantee, Free Courses for Jobs (formally known as the National Skills Fund) has been made available to help adults access free qualifications regardless of your financial circumstances. In addition to this, Greater Manchester Combined Authority offer the Greater Manchester (GM) Skills Fund to extend the offer of free qualifications available to adults.

These Level 3 qualifications have been carefully selected to help you improve your job prospects. They have good wage outcomes and address skill needs in the economy, delivering a wide range of skills in many industry sectors.

We are proud to be offering eligible courses in the following subject areas:

- Automotive
- Childhood Studies
- Computing and Digital
- Construction and Engineering.

Am I eligible?

To be eligible for a fully-funded course, you must meet the following eligibility criteria.

Greater Manchester Skills Fund:

- You are aged 19 or over
- This is your first or second Level 3 qualification or equivalent

Free Courses for Jobs:

- You are aged 19 or over

AND

- This is your first Level 3 qualification

OR

You are unemployed or you earn less than £18,525 a year regardless of whether you already have a Level 3 qualification.



How do I apply?

There is no need to apply separately for this funding, as this will be done during enrolment. Simply head to tmc.ac.uk/adults to find out more about our courses and how to apply.

What other funding is available?

19+ Access to Industry Award

The 19+ Access to Industry Award is made up of four different elements: tuition, exam fees, travel awards and childcare. The elements you can apply for will depend on your circumstances and the course you are studying.

Course Fees

Tuition fee support is available for courses up to and including Level 2 and learners aged 19-23 who already have a full Level 3 qualification. You may also be able to apply for our 19+ Access to Industry Award to cover some or all of the cost of your course and exam fees.

TMC GO

We've been working with Transport for Greater Manchester (TfGM) to incorporate your bus pass with your College ID and if eligible, you will be able to load a travel pass onto it every 28 days via a smartphone on campus.

Depending on your personal circumstances and income, TMC Go will not only help you with getting to and from College, it can also provide you with a way to explore all the great places in Greater Manchester.

Note: Payments and support may stop if attendance falls below College expectations.

Childcare

The maximum childcare funding available will be as follows.

For children aged up to 2 years old:

- You will be expected to pay 5% of the nursery fee directly to the provider
- The College will pay your childcare provider a maximum of £150.00 per week.

For children aged from 2 years and under 11 years:

- The College will support any additional childcare hours above the Nursery Education Grant hours voucher up to a maximum of £150.00 per week, per child
- You will be expected to pay 5% of the nursery fee directly to the provider.

Advanced Learner Loan

If you're going to be 19 or above at the time you start a Level 3 or Level 4 course with us, you could take advantage of an Advanced Learner Loan, available from the UK government. This loan can be used to pay some or all of your tuition fees.

Am I eligible?

If you're over 19 years old, studying a Level 3 or Level 4 course in further education and training then this loan is available for you.

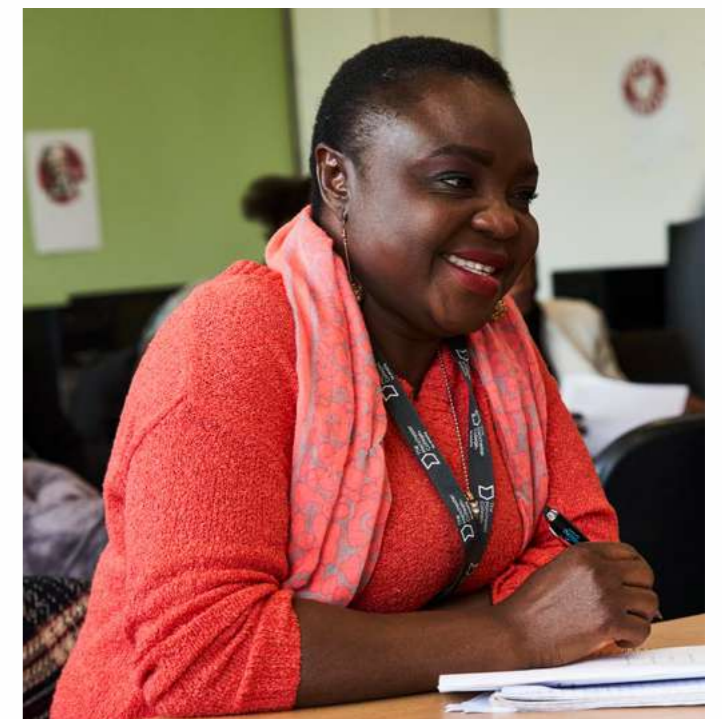
You'll need to have been resident in the UK for the last three years to be eligible. You can also apply if you are a member of the UK armed forces serving outside of England studying distance learning. The minimum loan amount you can take is £300 and the maximum is the full cost of your tuition fees.

How to apply:

Any student wishing to apply for financial support towards course fees and travel will need to complete an application during enrolment and produce proof of household income. If applying after enrolment, please speak with reception.

For applications for Childcare, head to tmc.ac.uk/finance to download the application form.

Want to find out more? Visit tmc.ac.uk/funding and you can also listen to our podcasts about Advanced Learner Loans and Free Courses for Jobs at tmc.ac.uk/podcast.



MEET THE TUTOR



Darren O'Leary

Logistics
including LGV/FLT/
Reach truck/
Manchester City
Council Taxi Licence.
Wythenshawe
Campus

Tell us about your experience in the industry and education.

I have over 30 years' experience in the logistics industry, and I went back into the education system in my mid-thirties. My highest qualification held is the Certificate in Education.

How and why did you get into teaching?

I applied for a position at The Manchester College to teach as I wanted to be able to help people to achieve their lifetime goals.

Tell us why you're so passionate about your subject area?

When I am out in the big wide world and I have been asked what I do for a living, I tell them, and I usually get the same response every time, "what's logistics?". Logistics is, by far, the largest most important industry in the world and the job opportunities are plentiful for all ages.

What is the best piece of advice you can give to students who are considering returning to education?

It's ok to doubt yourself and wonder if you will be able to achieve the goal you're aiming for, whatever your level of education. If you use the support systems that the College has in place, for example the learners 'drop in sessions', then the qualification becomes far easier to gain (when I went back into education, I wrote my first assignment by hand and had to count the words myself, as I had no computer literacy)! So, I have been in that position and I am proof that if you work hard, you can achieve your goals.

Why should adult learners choose to study at The Manchester College?

I work with other teachers across The Manchester College and we all share the same passion and determination to help learners to achieve their goals. The Manchester College provides real world work-based knowledge and in most cases assist with progression, either onto further learning or into employment.

HOW TO.. CHANGE A TYRE

If you drive, knowing how to change a tyre on a car can be a very useful if you ever find yourself with a puncture or a burst tyre. However, many drivers don't know how to do this, so our Automotive department have provided a short step-by-step guide on how to change a tyre.

1. Make sure you're in a safe place before changing your tyre.
2. You will need to loosen the wheel nuts / bolts before taking the wheel off.
3. Locate the jack under the vehicle then start to jack the car up. Make sure you support the vehicle with an axle stand.
4. Once the car is stable and the wheel is off the ground you can remove the tyre.
5. Visually inspect the tyre for any damage, then replace or repair the tyre if you need to.
6. After inspection refit the wheel onto the vehicle and tighten the wheel nuts / bolts.
7. Once you're happy with the wheel being fully secured back on you can start to slowly lower the jack down.



Watch our YouTube video
demonstrating the above here



If you're wanting to upskill or even change to a career in Automotive, we've got a wide range of adult courses available (page 16) or visit tmc.ac.uk/adults to apply now.

STUDENT SPOTLIGHT

We met with Nzara Price, a Business and Professional student based at our Shena Simon campus, to find out more about her experience studying with us.

Why did you choose this course?

I chose Business Administration Level 2 as a continuation of the Business Introduction course I had taken last year. My original reason for taking each of these courses was to gain knowledge and skills that would help me become a better employee. I feel confident in saying that these courses have helped me achieve that goal.

What have you enjoyed most about your course?

The encouragement and enthusiasm of my tutor. Faiza is amazing! She has provided me and my classmates with all the tools we need to succeed on this course and if there's anything we have trouble understanding she takes the time to explain it to us. The resources and printouts that she gave us were crucial to me, as I sometimes struggle with learning using digital content and prefer a physical copy of things. Also, I really appreciate how understanding and supportive she is. Without that I wouldn't know if I had done my work correctly. Collectively, I love this course because of my teacher and the subject fascinates me, plus it teaches me skills that I use every day.

Why did you choose The Manchester College?

When I moved to Manchester three years ago, The Manchester College had everything that I needed in order to go back into education as an adult: financial support, mental health and student support teams, and one of the highest success rates for adult learners in Manchester. As I struggle with mental health issues, I knew I needed to attend a college that could support me in that area, therefore this college was my only choice and I've never regretted it.

What are your plans for after the course?

I plan on taking a break from education after I finish this course and my GCSE English course. I've been attending College for the past two years while battling health issues and having a part time job. I've pushed myself to reach my goals and so I am taking a break and I hope to return to The Manchester College the following year to take the GCSE Maths course.


Would you recommend The Manchester College?

Yes, I would highly recommend The Manchester College to anyone who's looking into going back into education as an adult. I was so nervous to do so, thinking people would judge me, but I made friends with so many people who are in the same situation as me...an adult who wants to have another go at a chance they missed out on when they were younger.

I am proud to be a student of a college that has high moral standards and supports me when I'm not doing or feeling my best. The staff have always answered my questions or shown me where things were.

One of the things I love most about the College is how colourful and vibrant the staff and students are. It made me realize that this College is a safe haven for a lot of different people regardless of whether they are learning or teaching, and that component is crucial to anyone hoping to do something to make their lives better for themselves, their loved ones or the world.



 You can hear more from Nzara on our YouTube channel here

STUDENT SPOTLIGHT

We met with Jacobe Dunbar, a Performing Arts student based at City Campus Manchester, to find out more about his experience studying with us.

Why did you choose this course?

After a decade of not doing any performing arts, I was looking for a route back in that wasn't based in my hometown. I always knew that I was going to return to acting someday and over the past 5 years I had grown very fond of the city of Manchester. I researched courses online and came across the Level 2 Performing and Production Arts Course and it just seemed like a perfect fit especially with it being a part-time evening course.

What have you enjoyed most about your course?

The thing I enjoyed most about the course was the research. Getting to grips with a character and learning lines really is the most enjoyable part. Allowing yourself to be completely vulnerable and in the moment is an amazing feeling.

Why did you choose The Manchester College?

I chose The Manchester College because it just seemed to match up with all my aspirations and it felt like the place to be in order to further develop my skill base.


What are your plans for after the course?

My plans after the course are to progress on to a higher-level programme with their higher education partner, UCEN Manchester. I'm auditioning for the Level 4 Performing Arts (Acting) HNC course which is part of the Arden School of Theatre. So, fingers crossed!

Would you recommend The Manchester College?

I would recommend The Manchester College to anyone and more specifically anyone wanting to do the course I've just completed. The tutors were truly amazing! I'd like to say a huge shoutout to Lucy Oldham and Rick Oldham, you have both helped me recapture my hunger and joy for performing arts.



 You can hear more from Jacobe on our YouTube channel here

OUR COURSES

The following pages list the adult courses we offer in 2023, their start dates and the campuses they are delivered at. Entry requirements for your chosen course can be found at [tmc.ac.uk](https://www.tmc.ac.uk).



ACCESS TO HIGHER EDUCATION



Access to Higher Education Diplomas are delivered by UCEN Manchester. UCEN Manchester offers a wide selection of degrees as well as a range of Access courses to help you prepare for degree-level study and university. These courses differ from a usual level 3 as they are also designed to help you develop skills you'll need at uni like essay writing, presenting and proofreading.

UCEN
MANCHESTER
FIND YOUR FUTURE

Search Higher Education Diplomas and find out more about them at [ucenmanchester.ac.uk](https://www.ucenmanchester.ac.uk) or scan.



Course Title	Level	Award	Duration	Campus	Start date
ACCESS TO HE					
Business	3	Access to HE Diploma	1 year	Shena Simon	September
Business (Pre-Access)	2	Pre Access Certificates	1 year	Shena Simon	September
Careers in Social and Community Work	3	Access to HE Diploma	1 year	Openshaw	September
Combined and Medical Science	3	Access to HE Diploma	1 year	CityLabs	September
Computing and Digital	3	Access to HE Diploma	1 year	Shena Simon CityLabs	September
Engineering	3	Access to HE Diploma	1 year	CityLabs	September
English, Writing and Media	3	Access to HE Diploma	1 day	Shena Simon	September
Environmental Science	3	Access to HE Diploma	1 year	Shena Simon CityLabs	September
Health and Physiotherapy	3	Access to HE Diploma	1 day	Openshaw	September
Health and Social Care Professions (Pre-Access)	2	Pre Access Certificates	1 year	Openshaw	September
History and Archaeology	3	Access to HE Diploma	1 year	Shena Simon	September
Hospitality, Leisure and Tourism	3	Access to HE Diploma	1 year	Shena Simon	September
Humanities	3	Access to HE Diploma	1 day	Shena Simon	September
Law, Politics and Crime	3	Access to HE Diploma	1 day	Shena Simon	September
Medicine	3	Access to HE Diploma	1 year	CityLabs	September
Nursing and Midwifery	3	Access to HE Diploma	1 year	Openshaw External	September
Professions in Education	3	Access to HE Diploma	1 year	Shena Simon	September
Radiography; Orthotics and Prosthetics	3	Access to HE Diploma	1 year	CityLabs	September
Skills for Further Learning and Employment in Humanities (Pre-Access)	2	Extended Certificate	1 year	Shena Simon	September
Skills for Further Learning and Employment in Science and Engineering (Pre-Access)	2	Extended Certificate	1 year	CityLabs	September
Social Science	3	Access to HE Diploma	1 year	Openshaw	September
Veterinary Science and Zoology	3	Access to HE Diploma	1 year	CityLabs	September
AUTOMOTIVE					
ATA Body/Paint/Met Pre-test	2	Personal and Professional Development	1 day / half day	Openshaw	April May
ATA Body/Paint/Met Referral	2	Personal and Professional Development	1 day	Openshaw	May June
ATA Light Vehicle	1	Personal and Professional Development	1 day	Openshaw	January - July
ATA Refrigerant Handler	2	Personal and Professional Development	1 day	Openshaw	August
ATA Senior MET*	3	Personal and Professional Development	1 day 2 days	Openshaw	April May
ATA Senior Panel*	3	Personal and Professional Development	1 day	Openshaw	April May
Auto-Electrical and Mobile Electrical	2	Diploma	1 year	Openshaw	September
Auto-Electrical and Mobile Electrical	2	Diploma	6 weeks	Openshaw	April June
Auto-Electrical	3	Diploma	6 weeks	Openshaw	August
Auto-Electrical and Mobile Electrical Principles	3	Diploma	1 year	Openshaw	September
Basic Vehicle Checks	Entry	Personal and Professional Development	1 day	Openshaw	June December
Electric/Hybrid Vehicle Routine Maintenance Activities	2	Award	1 week	Openshaw	August
Light Vehicle Maintenance and Repair Principles	3	Diploma	1 year	Openshaw	September

Paint Technician	-	Personal and Professional Development	1 day	Openshaw	June August
Panel Technician*	2	Personal and Professional Development	2 days	Openshaw	August
Refrigerant Handler	-	Personal and Professional Development	1 day	External	April
Resistance Spot Welding	2	Personal and Professional Development	1 day	Openshaw	June
Senior Paint	3	Personal and Professional Development	1 day	Openshaw	April May
Senior Panel Technician	3	Personal and Professional Development	2/3 days	Openshaw	April May June
Vehicle Accident Repair	1	Diploma	1 year	Openshaw	September
Vehicle Accident Body Repair	2	Diploma	1 year	Openshaw	September
Vehicle Accident Body Repair Principles	3	Diploma	1 year	Openshaw	September
Vehicle Fitting Principles	2	Diploma	1 year	Openshaw	September

BUSINESS AND PROFESSIONAL					
ACCA Applied Skills	6	Personal and Professional Development	2 year	Shena Simon	September
Accounting (AAT) day and evening classes available	2	Foundation Certificate	1 year	Shena Simon	January
Accounting (AAT)	3	Advanced Diploma	1 year	Shena Simon	September
Accounting (AAT)	4	Professional Diploma	54 weeks	Shena Simon	September
Accounting Book Keeping	1	Award	12 weeks	Shena Simon	April September January
Business	1	BTEC Introductory Award	16 weeks	Shena Simon	September
Business Administration	2	Certificate	1 year	Shena Simon	September
Conveyancing Law and Practice	4	Diploma	2 years	Shena Simon	September
Conveyancing Law and Practice	6	Diploma	2 years	Shena Simon	September
ILM Leadership and Management	5	Certificate	18 weeks	Shena Simon	September
ILM Leadership And Management Skills	3	Certificate	12 weeks	Shena Simon	September
Legal Foundation Studies	2	Extended Certificate	17 weeks	Shena Simon	September
NALPS Paralegal Practice	3	Diploma	1 year	Shena Simon	September
NALPS Paralegal Studies	4	Diploma	2 years	Shena Simon	September
Starting a Small Business	2	Personal and Professional Development	12 weeks	Shena Simon	April September
CIM (marketing)	3	Foundation Certificate in Professional Marketing	1 year	Shena Simon	September
CIM (marketing)	4	Foundation Certificate in Professional Marketing	1 year	Shena Simon	September

CHILDHOOD STUDIES					
Caring for Children	1	Diploma	1 year	Harpurhey Wythenshawe	September
Childcare and Education	3	Diploma	2 years	Openshaw	September
Early Years Practitioner	2	Diploma	1 year	Openshaw	September
Emergency First Aid in the Workplace	3	Award	1 day	Harpurhey Openshaw Wythenshawe	September
Emergency Paediatric First Aid	3	Award	1 day	Harpurhey Openshaw Wythenshawe	September
Preparing to Work in Schools	1	Award	10 weeks	Harpurhey Wythenshawe	September January April
Supporting Teaching and Learning	2	Certificate	1 year	Harpurhey Openshaw Wythenshawe	September January
Supporting Teaching and Learning	3	Diploma	1 year	Openshaw Wythenshawe	September January

* Must have relevant employment

COMPUTING AND DIGITAL

Coding Practices	3	Certificate	30 weeks	City Campus	September
Computing Principles	3	Diploma	1 year	City Campus	September
Cyber Security Practices	3	Certificate	24 weeks	City Campus	September
Essential Digital Skills	1	Essential Digital Skills	12 weeks	City Campus	September January
HTML and CSS for Beginners	-	Personal and Professional Development	10 weeks	City Campus	October
Introduction to Project Management	-	Personal and Professional Development	10 weeks	City Campus	April
Oracle SQL	-	Personal and Professional Development	10 weeks	City Campus	October
Principles of Coding	3	BTEC Award	14 weeks	City Campus	September
Programming With C#	-	Personal and Professional Development	10 weeks	City Campus	April September
Python for Beginners	1	Personal and Professional Development	8 weeks	Openshaw	October
Technical Certificate in IT Support	2	BTEC Technical Certificate	24 weeks 1 year	City Campus	September

CONSTRUCTION AND ENGINEERING

3D CAD - Advanced	FCR	Personal and Professional Development	3 days	Openshaw	April May
3D CAD - Beginners	FCR	Personal and Professional Development	3 days	Openshaw	April May
3D CAD - Intermediate with an introduction to 3D Printing	FCR	Personal and Professional Development	2 days	Openshaw	April May
BPEC Solar Thermal Systems	-	Personal and Professional Development	1 week	Openshaw	August
BPEC Water Regulations	1	Personal and Professional Development	1 year	Openshaw	August
Carpentry and Joinery	1 - 3	Diploma	1 year	Openshaw	September November
Domestic Hot Water Vent and Unvent	-	Personal and Professional Development	1 day	Openshaw	August
Electrical Installation	2 - 3	Advanced Technical Diploma	1 year	Openshaw	September
Legionella's Training	-	Personal and Professional Development	1 week	Openshaw	August
National Foundation Diploma in Construction and the Built Environment	3	Diploma	1 year	Wythenshawe	September
Plumbing	2 - 3	Technical Certificate	1 year	Openshaw Wythenshawe	September
Rain Water Harvesting	-	Personal and Professional Development	1 day	Wythenshawe	August

CREATIVE AND DIGITAL MEDIA

Creative Media Skills	2	Certificate	34 weeks	City Campus	September
Photoshop for Photographers	-	Personal and Professional Development	8 weeks	City Campus	September
An Introduction to Photoshop	-	Personal and Professional Development	8 weeks	City Campus	September January
An Introduction to DSLR Photography	-	Personal and Professional Development	6 weeks	City Campus	September

ENGLISH AND MATHS

Functional English	E1 1 2	Personal and Professional Development	Minimum 24 weeks	Shena Simon	Intakes throughout the year
Functional Maths	E3 1 2	Personal and Professional Development	Minimum 24 weeks	Shena Simon	Intakes throughout the year
GCSE English Language	GCSE	Personal and Professional Development	1 year	Shena Simon	September
GCSE Mathematics	GCSE	Personal and Professional Development	1 year	Shena Simon	September

ESOL

ESOL Advanced	1	Preparation for work and life	Minimum 24 weeks	Openshaw Harpurhey Wythenshawe Shena Simon	Intakes throughout the year
ESOL for Beginners	Pre-Entry	Preparation for work and life	Minimum 24 weeks	Openshaw Harpurhey Wythenshawe Shena Simon	Intakes throughout the year
ESOL Elementary	E1	Preparation for work and life	Minimum 24 weeks	Openshaw Harpurhey Wythenshawe Shena Simon	Intakes throughout the year
ESOL Pre-Intermediate	E2	Preparation for work and life	Minimum 24 weeks	Openshaw Harpurhey Wythenshawe Shena Simon	Intakes throughout the year
ESOL Intermediate	E3	Preparation for work and life	Minimum 24 weeks	Openshaw Harpurhey Wythenshawe Shena Simon	Intakes throughout the year

HAIR AND BEAUTY

Barbering	2	Diploma	1 year	Harpurhey Wythenshawe	September
Barbering	3	Diploma	1 year	Wythenshawe	September
Beauty Specialist Techniques	2	Certificate	34 weeks	Harpurhey Wythenshawe	September
Beauty Therapy	2	Diploma	1 year	Harpurhey Wythenshawe	September
Cutting Men's Hair	2	Award	10 weeks	Wythenshawe	January
Face and Body - Electrical route with Massage	3	Diploma	1 year	Harpurhey Wythenshawe	September
Gel Polish	-	Personal and Professional Development	2 Evenings	Harpurhey	January
Hairdressing	2	Diploma	1 year	Harpurhey Wythenshawe	September
Nail Technology	3	Diploma	1 year	Harpurhey Wythenshawe	September
Photographic Make-up and Dressing Hair	2	Award	10 weeks	Wythenshawe	January
Swedish Massage	3	Certificate	34 weeks	Harpurhey Wythenshawe	September
Women's Hairdressing	2	Diploma	1 year	Harpurhey Wythenshawe	September
Women's Hairdressing	3	Diploma	1 year	Harpurhey Wythenshawe	September

HEALTH AND SOCIAL CARE					
Counselling Concepts	2	Award	10 weeks	Shena Simon Wythenshawe	September January April
Counselling Skills	3	Certificate	1 year	Shena Simon Wythenshawe	September
Health and Social Care	1	Introductory Diploma	1 year	Harpurhey Openshaw Wythenshawe	September
Health and Social Care	2	Extended Certificate	1 year 36 weeks	Harpurhey Openshaw Wythenshawe	September
Health and Social Care	2	Technical Diploma	1 year	Openshaw	September
Health and Social Care	3	Certificate	7 months	Shena Simon	January
Health and Social Care	3	Diploma	1 year 720 Guided Learning Hours	Harpurhey Openshaw, Wythenshawe	September

HOSPITALITY AND CATERING					
Bakery and Patisserie	2	Diploma	1 year	Harpurhey	September
Cakes, Bakes and Treats	-	Personal and Professional Development	6 weeks	City Campus Harpurhey	May
Cake Decoration (Basic)	-	Personal and Professional Development	10 weeks	City Campus Harpurhey	October
Cake Decoration (Intermediate)	-	Personal and Professional Development	10 weeks	City Campus Harpurhey	April October
Chocolate	2	Personal and Professional Development	3 weeks	City Campus	October
Culinary Skills	1	Certificate	26 weeks	Harpurhey Wythenshawe	September
Culinary Skills	2	Diploma	1 year	Harpurhey Wythenshawe	September
Patisserie and Confectionery	3	Certificate	1 year	City Campus	September
Professional Cookery	3	Diploma	36 weeks	City Campus	September
Professional Food and Beverage Service	2	Diploma	1 year	City Campus	September
Professional Patisserie and Confectionery	3	Diploma	1 year	Harpurhey Wythenshawe	September

LOGISTICS					
CPC 1 Day Training: 7 Hours	-	Personal and Professional Development	1 day	Wythenshawe	Various
FLT Refresher Course	-	Entry 3 Certificate	3 days	Wythenshawe	Various
Hackney and Private Hire Licence	-	Entry 3 Certificate and Level 1 Diploma	7 weeks	Wythenshawe	Various
Rigid Cat C (Inc Test)	-	Entry Certificate and Diploma	6 weeks	Wythenshawe	Various
Skills, Further Learning, Employment and Professional Development: FLT	E3 Cert, LI Dip	Entry Certificate and Diploma	2 weeks	Wythenshawe	Various
Skills, Further Learning, Employment and Professional Development: LGV	E3 Cert, LI Dip	Entry Certificate and Diploma	3 weeks	Wythenshawe	Various
Skills, Further Learning, Employment and Professional Development: Taxi	E3 Cert, LI Dip	Entry Certificate and Diploma	7 weeks	Wythenshawe	Various
Taxi Knowledge	1	Personal and Professional Development	7 weeks	Wythenshawe	Various

MUSIC					
Music Production	1	Award	16 weeks	City Campus	September
Music Production	2	Certificate	14 weeks	City Campus	September
Music Technology and Production	3	Diploma	1 year	City Campus	September

PERFORMING ARTS					
Performing and Production Arts	2	Award	20 weeks (Part-time evenings)	City Campus	September February

SPORT					
Gym Instructing and Personal Training	3	Diploma	26 weeks	Openshaw	September
Instructing Circuit Sessions	2	Award	2 weeks	Openshaw	May
Personal Training	3	Diploma	14 weeks	Openshaw	May

SUPPORTED LEARNING					
Supporting Learners with Dyslexia	3	Award	10 weeks	Openshaw	November

TEACHER EDUCATION					
Assessing Competence in the Work Environment	3	Award	1 year	Various	Various
Assessing Vocational Achievement	3	Certificate	1 year	Various	Various
Assessing Vocationally Related Achievement	3	Award	1 year	Various	Various
Award in Education and Training	3	Award	12 weeks	TBC	September
Internal Quality Assurance of Assessment Process and Practice	4	Award	1 year	Various	Various
Leading in Internal Quality Assurance of Assessment Processes and Practice	4	Certificate	1 year	Various	Various
Update for Assessor Qualifications	3	Personal and Professional Development	1 day	Various	Various
Understanding the Principles and Practices of Assessment	3	Award	26 weeks	Various	Various
Understanding the Internal Quality Assurance of Assessment Processes and Practice	4	Award	26 weeks	Various	Various
Update for IQA Qualifications	4	Personal and Professional Development	1 day	Various	Various

THEATRICAL AND MEDIA MAKE UP					
Diploma in Theatrical Special Effects and Hair and Media Make up	3	Diploma	1 year	Harpurhey Wythenshawe	September
Hair and Media Make-up	2	Diploma	1 year	Harpurhey Wythenshawe	September

TRAVEL, TOURISM AND AVIATION					
Air Cabin Crew	2	Certificate	1 year	Harpurhey Wythenshawe	September
Aviation Operations	3	Diploma	1 year	Wythenshawe	September
Cabin Crew	2	Diploma	1 year	Harpurhey Wythenshawe	September
Travel and Tourism	1	Diploma	1 year	Harpurhey Wythenshawe	September
Travel and Tourism	2	Certificate	1 year	Harpurhey Wythenshawe	November
Travel and Tourism	3	Diploma	1 year	Harpurhey Wythenshawe	September

VISUAL ARTS					
Art and Design - Photography	2	Diploma	1 year	City Campus	September
Art and Design	3	Foundation Diploma	1 year 2 years (part-time)	City Campus	September
Fashion and Textiles/Pattern Cutting and Construction	1	Award	16 weeks 1 year	City Campus	September
Fashion and Textiles/Pattern Cutting and Construction	2	Certificate	16 weeks 1 year	City Campus	September
Fashion and Textiles/Pattern Cutting and Construction	3	Certificate	16 weeks 1 year	City Campus	September
Jewellery Making	1	Award	32 weeks	City Campus	September
Jewellery Making	2	Award	32 weeks	City Campus	September

FIND YOUR COURSE AND APPLY ONLINE

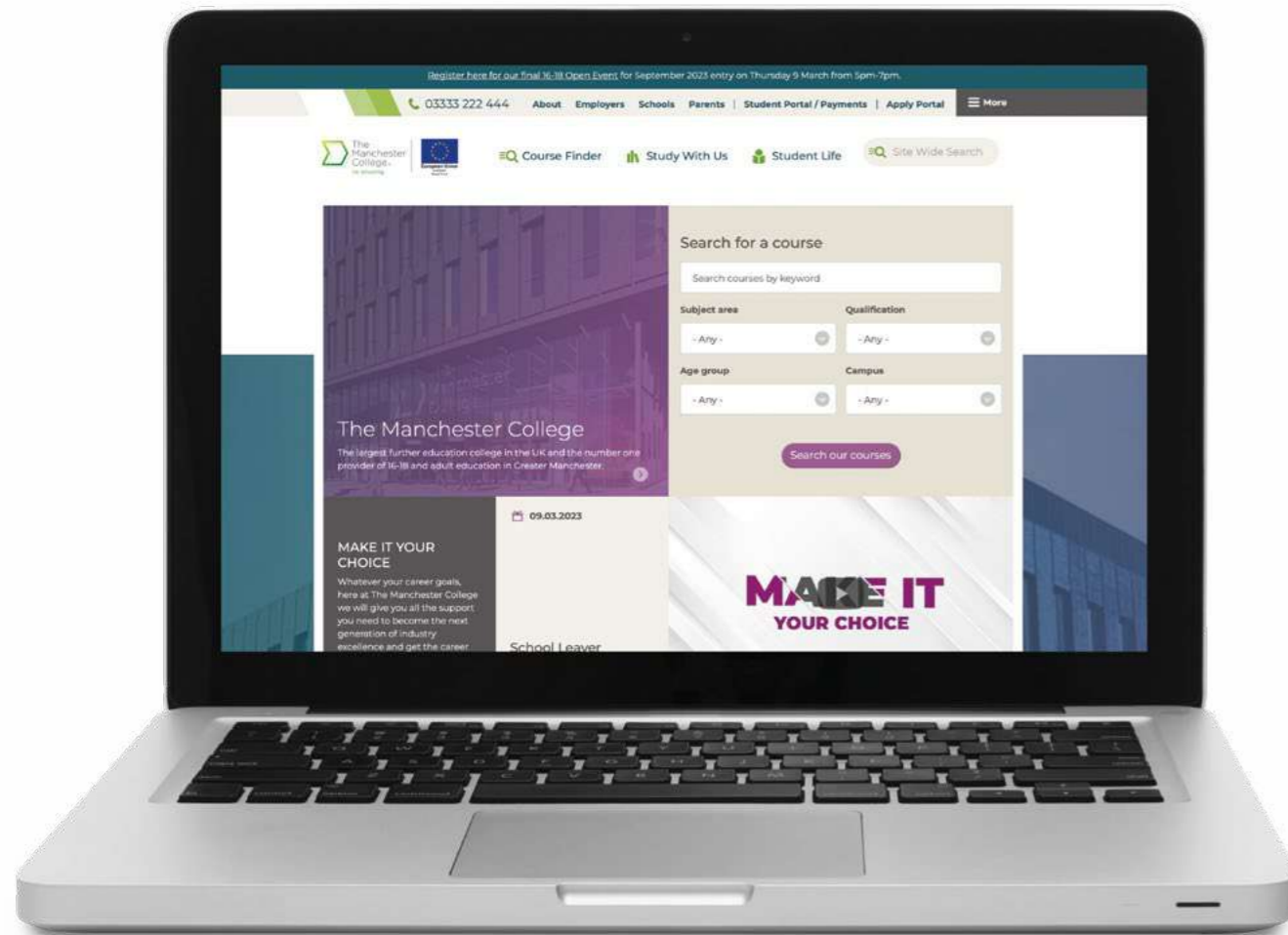
To apply to The Manchester College, you will need to use our online application portal:

apply.tmc.ac.uk

You will be asked to create an account using an active email address and to set up a password. Once you have set up an account you will be able to track your application and subsequently enrol.

Once you have applied, and depending on the requirements of the course, you will receive a conditional offer of a place at the College via the applicant portal.

You can also update your details and let the College know if you wish to accept or decline your offer of a place within the portal.



Adult Open Event



**15 June
2023
5pm - 7pm**

 REGISTER NOW



tmc.ac.uk

ADULT OPEN EVENT DEGREES AND DIPLOMAS

Find out more about starting, changing or progressing in your career with a degree or a diploma from UCEN Manchester.

THURSDAY 25 MAY

5-7PM

OPENSHAW CAMPUS



BOOK YOUR PLACE NOW AT
[UCENMANCHESTER.AC.UK/EVENTS](https://ucenmanchester.ac.uk/events)

WHAT TO ASK WHEN RETURNING TO STUDY AS AN ADULT

Starting a degree isn't just about choosing the right course, it may also mean moving to a new city and finding a new home for the next year or three.

Here's our guide of what to ask – beyond, "will you take me with X UCAS points or X years of industry experience?" So you don't leave the conversation with an offer, but no real idea.

So, if you're coming back to education as a mature student ask:

- Can I gain entry based on my industry experience?
- How many hours/days will I be in?
- What are the student-to-teacher ratios like?
- Can I study part-time?
- What if my circumstances change and I can't keep going next year?
- Will I be able to complete a placement or gain any industry experience?
- Do other students work as well as study?
- Will my employer see the benefits of me studying?
- I've not studied in a while, will anyone help me with the transition?
- Have you taught students like me before?
- Is there mental health support available?
- Are there any bursaries I can access if things get a bit tough financially?
- Can I complete some of the course virtually for flexibility?
- What practicals will I be doing to get me ready for industry? How do you work with industry?
- Do tutors have links with people in industry to help us network?

The right experience

Remember, finding a course is about more than the entry requirements, it's about choosing the right experience for you.

Find out more about degrees in:

- Business
- Computing and Cyber Security
- Criminology and Social Justice
- Childhood Studies
- Construction
- Sport
- Healthcare Professions
- Counselling
- Teacher Education
- Access to Higher Education Diplomas





ADVANCE YOUR CAREER

Take your career to the next level with our professional qualification partner, MOL.

CIPD

Organisational Delivery Partner

Human Resources

CIPD Foundation Certificate in People Practice (Level 3)

CIPD Associate Diploma in People Management (Level 5)

CIPD Associate Diploma in Organisational Learning and Development (Level 5)

CIPD Advanced Diploma in Strategic People Management (Level 7)

CIPD Advanced Diploma in Strategic Learning and Development (Level 7)



Management and Leadership

CMI Level 3 Diploma Principles of Management and Leadership

CMI Level 5 Diploma in Management and Leadership

propertymark

Property Agency

- Residential Lettings and Property Management
- Residential Inventory Management and Tenancy Deposits
- Real Property Auctioneering
- Sale of Residential Property
- Commercial Property Agency
- Property Agency in Scotland



Accredited

Project Management

Level 4 Qualification on Project Management



Property Law

Short Course Conveyancing: An Introduction for Property Professionals



Digital Learning Design

Level 5 Professional Diploma in Digital Learning Design

LEAD THE FUTURE WITH A TOTAL PEOPLE APPRENTICESHIP

If you want to work, earn and learn all at the same time, then an apprenticeship with our partner organisation Total People could be your perfect step towards a rewarding career!

Our apprenticeships range from Level 2 to Level 5 and beyond, giving you the opportunity to eventually complete a degree level apprenticeship, fully funded and without any associated student debt.

We offer apprenticeships in the following areas:



Accountancy



Engineering



Business and Administration



Hair and Barbering



Commercial Vehicle



Health and Social Care



Construction



Hospitality



Customer Service



Human Resources



Dental Nursing



Management



Education and Childcare



Pharmacy



Electrical



Property



Project Management

GET IN TOUCH

Find out more about our apprenticeships or register with us at totalpeople.co.uk or by calling **03333 222 666**



FOR MORE INFORMATION, CONTACT OUR QUALIFICATION ADVISORS

📞 0333 242 9787 ✉ enquiries@mollearn.com 🌐 www.mollearn.com



The Manchester College



@TheMcrCollege



@TheMcrCollege



03333 222 444



@TheMcrCollege



tmc.ac.uk

The Manchester College is committed to equality of opportunity, non-discriminatory practices and supporting individual learners.

This information is also available in a range of formats, such as large print, on request.

All information in this brochure was correct at the time of print.