



GO FURTHER

Issue 03 | Summer 2022

Adult Education at The Manchester College

DON'T MISS OUR

ADULT LEARNER OPEN EVENT

GO FURTHER WITH OUR CENTRE OF EXCELLENCE FOR ADULT EDUCATION

THURSDAY 16 JUNE | 5PM-7PM

OPENSHAW CAMPUS



REGISTER NOW

CONTENTS

Introduction from Michael Walsh, Vice Principal	4
5 Things To Look Forward To In Greater Manchester	5
City Campus Manchester	6
Meet The Tutor	8
How To Protect Your Skin	9
Finance Explained	10
Student Spotlight	12
Striking A Healthy Life Balance	14
Our Courses	16
MOL	26
Total People	27
UCEN Manchester	28



HELLO,

Welcome to the latest edition of Go Further, the termly magazine from The Manchester College that provides you with everything you need to know about adult education and career development.

As the summer months are approaching, perhaps you are looking for a new opportunity or challenge, or you are thinking of retraining for a new career or simply want to gain the skills that will help you take your career to the next level. Whatever new goals you set, this edition of Go Further will provide you with an insight into how The Manchester College can provide you with the opportunity to take that next step.

If you're considering studying with The Manchester College, you can have the confidence in knowing we support over 10,000 adult learners every year to achieve their aspirational goals. Throughout this edition you will find lots of top tips, information and advice to help you take the next step in your journey.

In our Centre of Excellence for Adult Education we offer courses in a huge range of subject areas, from Entry Level to Level 6, as well as Access to Higher Education diplomas. This means you'll find lots of opportunities to upskill in your chosen field or retrain for a new career. Regardless of your current academic level or ultimate objective of returning to education as an adult, we're confident that you will find the right course for you at The Manchester College.

You'll benefit from learning in an industry standard environment, following our £140m investment in our facilities, taught by our supportive tutors who are experts in their field, many of which have worked in the industry and still do. You will also have access to our Careers and Welfare team who are fully committed to helping you every step of the way, offering all the support and advice you need both academically and personally.

Ultimately, all of our courses are aimed at helping every learner achieve their full potential. Whatever your circumstances and ambition we have opportunities to fit around your life and are here to give you the support you need to succeed. We are here to make sure that when you leave us you will have gained the skills you need to progress in your career.

We know that finance may be a major consideration for you as you make your decision. However, there are lots of options available to support you including Advanced Learner Loans that can be used to pay for some or all of your tuition on a Level 3 or Level 4 course. You may also qualify for a fully funded Level 3 qualification via the National Skills Fund or the Greater Manchester Skills Fund. You can find out more about finance and funding options later in this edition.

In addition to information from our Finance and Funding team, in this edition of Go Further you'll also find:

- Wellbeing guidance from our Careers and Welfare team
- A skincare guide from our Hair and Beauty department
- An update on our new City Campus Manchester

Thank you for reading and I hope to see you soon.



Warm regards,
Michael Walsh
Michael Walsh
Vice Principal

5 THINGS TO LOOK FORWARD TO IN GREATER MANCHESTER!

After a difficult period for Travel and Tourism and Hospitality and Catering, there's a buzz in the air as both industries start to rebuild their presence across Manchester. From outdoor experiences and cultural developments to hospitality openings and events, the city is back to its vibrant best – bringing with it amazing jobs and opportunities for people in the city.



MAYFIELD PARK

Manchester's first new park in more than 100 years will be unveiled in late 2022.

Spanning 6.5 acres, Mayfield Park is currently under construction on the sprawling Mayfield site adjacent to Piccadilly Station.



CASTLEFIELD VIADUCT

The Grade II-listed Castlefield Viaduct is being turned into an elevated urban park, much like New York's High Line, by the National Trust.

Phase one will open to the public in the summer and will breathe a new lease of life into its industrial architecture.



LEONARDO HOTEL

Capital & Centric's Jenga-inspired hotel is well on the way and due to open in spring.

The £35m development, in the heart of Piccadilly East, will be draped in plants and plans include a ground-floor restaurant, cafe, and external terrace connecting to a new public square.



POLLEN BAKERY

The famed Ancoats bakery is expanding with a second location, this time at Kampus.

The new location will offer an expanded brunch menu as well as more room for baking their sell out breads and pastries, with a chance for customers to see the kitchen working.



SEXY FISH RESTAURANT

Decadent Mayfair restaurant Sexy Fish, owned by The Ivy's Richard Caring, is taking over the old Armani unit in Spinningfields.

It first opened in 2015 and is famed for its luxurious dining environment and will be one of the most talked-about restaurant openings of 2022.

AND SO MUCH MORE...

For more information and to see all the other new developments, exhibitions and businesses popping up across the city, visit: MarketingManchester.com

CITY CAMPUS MANCHESTER

Our brand-new City Campus Manchester is opening this September

Our amazing new, state-of-the-art campus will provide you with access to industry standard facilities, in an environment that matches what you'd expect to see in the workplace, giving you the best possible chance to prepare for your future career.

If you are looking to study on one of our Computing and Digital, Creative and Digital Media, Hair and Beauty, Hospitality and Catering, Music, Performing Arts or Visual Arts courses and are interested in joining us in September 2022, you could be one of the first learners to study at our new City Campus Manchester.

An industry standard experience

Whatever your course, you'll be studying in facilities and using equipment that is equivalent to what you'll find when you start work, so you'll have the skills you need to hit the ground running in your career.

Looking at Computing and Digital? How about:

- Cutting edge IT suites, the latest high spec kit, and cyber-security lab
- A 'Click Studio' to collaborate with employers
- Computer repair service run by students

Our Creative and Digital Media suites offer:

- TV studio with production gantry, radio, and sound studios
- An infinity green wall to add a touch of Hollywood to productions
- Latest gaming technology from the e-gaming sector

Get a taste for industry excellence in Hospitality and Catering:

- Training kitchen and bakery, chocolate workstation
- On-the-job training as you run our 40-seat restaurant
- Chefs' Forum masterclasses

Heading for a career in Music? Try out our:

- DJ classroom
- Control rooms and mixing desks
- State-of-the-art band teaching rooms



A theatre at the heart of the campus welcomes our Performing Arts students, plus:

- Double height studios with semi-sprung floors
- Workshops for set building and wardrobe area for costume design
- Ensemble and 1-2-1 singing rooms

Studying Visual Arts? How about:

- Fully equipped jewellery, ceramics, and textile studios
- 3D, fashion and pattern cutting workshops
- Double height art studio for displaying work

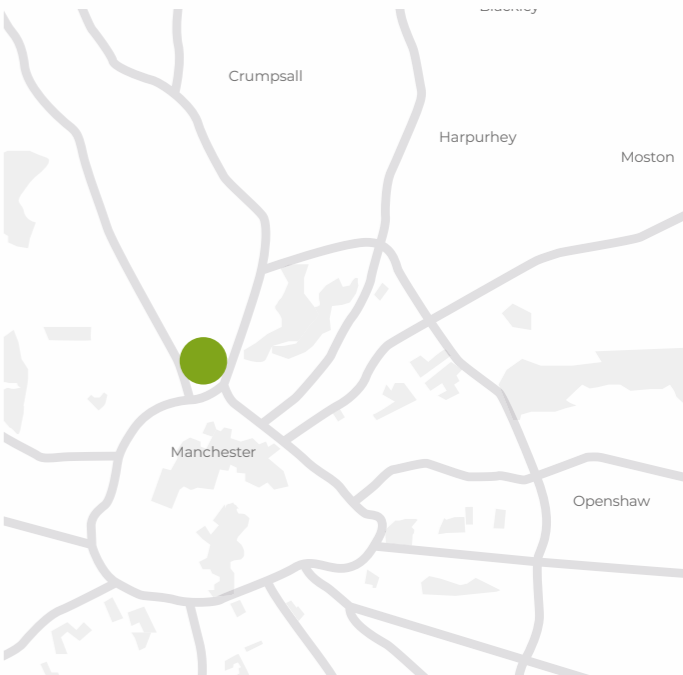
Welcoming and accessible

Situated in the very heart of Manchester city centre, City Campus is easily accessible from across the whole of Greater Manchester.

The building has been designed to provide you with plenty of welcoming and easily accessible spaces, with a large communal courtyard. What's more, all the amenities are aimed at providing you with an environment which you will thrive in and feel fully supported to achieve your aspirational goals.

Facilities include a dedicated Library with both quiet and group study spaces, banks of self-service laptops that you can borrow to use throughout the building, a range of food and drink options, including a Starbucks, and a stunning roof top terrace.

There will also be dedicated spaces for our outstanding Student Services, Careers and Welfare teams and Student Support where you will find everything you need to ensure you reach your full potential.



Find out more here

MEET THE TUTOR

Roger Taylor
Business and Professional
St. John’s Campus

Tell us a about your experience in the industry and education

I have been a law lecturer at The Manchester College since November 1995. I am a qualified solicitor (England and Wales) and full member of The Law Society. I qualified at Clyde and Co (a large law firm in the City of London) and prior to this, I worked for two-and-a-half years at British Steel - which did prove to be quite an eye opener!

How and why did you get into teaching?

Randomly and speculatively. My mother once suggested “why don’t you go and apply for lecturing/teaching jobs like your dad?” So, I sent a speculative letter with a CV to The Manchester College, which was at the time called MANCAT, and the rest is history.

Tell us why you’re so passionate about your subject area?

Because law is about people and attempting to achieve justice between them.

Cases like the dead snail in the ginger beer bottle (Donoghue-v-Stevenson (1932) or the lady who got locked in the ladies’ loo and tried to escape by standing in her stilettos on the loo roll holder but injured herself [Sayers-v-Harlow District Council (1958). Or the

controversial but cult figure of Lord Denning (there were even student T shirts bearing the logo ‘Lord Equity Denning’), or the Chambers-v-God case. These were landmark cases of their time, if you’ve not heard of them, look them up.

That’s why I’m passionate about law.

What is the best piece of advice you can give to students who are considering returning to education?

You are never too old or inexperienced to learn, I’ve done it. As human beings we have our flaws but if you can shape people’s minds you can change the world!

Why should adult learners choose to study at The Manchester College?

There is a brilliant camaraderie; we have a group of very approachable tutors and staff. Down to earth and with a listening ear.

HOW TO PROTECT YOUR SKIN

It’s coming up to those hot summer months and in preparation our Level 4 students in Hair and Beauty have been studying skin care and protection. Here’s some of their passed on wisdom to help protect your skin this summer.

Premature Ageing

Most of us are familiar with the term anti-ageing and the natural ageing process, but premature ageing is different. It occurs when your skin undergoes an unnatural process, this could be extreme sun exposure or an unhealthy lifestyle.

What causes it?

- Sun
- Smoking
- Poor diet low in protein and rich in simple carbohydrates
- A diet low in fruits and vegetables
- Genetics

Our Recommended Treatment

Give your skin that glowing feeling!

Tips on how to protect your skin from sun damage and premature ageing...

- 01.** Use a cleanser daily, morning and night, to clean your skin and remove make-up.
- 02.** Next is the toner, apply to the skin using a damp cotton pad.
- 03.** For that extra skin treat add exfoliant to your regime- exfoliation is a crucial step in your skin care routine and should be done once or twice a week.
- 04.** Protect the delicate eye area with an eye gel or cream - using gentle circular movements with your ring finger.
- 05.** Think about those serums and anti ageing ampoules to give the skin that extra protection and a boost- these are applied under your moisturiser.
- 06.** Moisturiser is next- ensure it contains a good SPF to protect your skin from UV rays and free radicals in the atmosphere, use upward and outward strokes when applying to the skin.

Check out our Eve Taylor retail range at The Manchester College hair and beauty salon



FINANCE EXPLAINED

Study Programme Award



Finances shouldn't be a barrier to your success, that's why we offer support packages to help with everything from travel to childcare.

We're committed to helping you achieve your goals and as well as all the award-winning support you'll receive from our Advice and Support teams, we also have various bursaries in place that form The Manchester College's Study Programme Award (SPA) depending on your personal circumstances and household income.

What is the Study Programme Award?

The 19+ Study Programme Award is made up of four different elements: tuition fees, travel awards, exam fees, and childcare. The elements you can apply for will depend on your circumstances and the course you are studying.

What support is available?

Course and exam fees

If you are eligible, you may be able to apply for a 19+ Study Programme Award to cover some or all of the cost of your course and exam fees. This typically applies to students who are*

Aged 19-23 and you are:

- Studying your first full Level 2 or 3 course (if you don't already have one)
- Studying a course up to Level 2 and are claiming welfare benefits
- Studying a course up to Level 2 and looking for employment

Or if you are aged 19+, studying a course up to Level 2 and are working on a low income.

**Speak to our Careers and Welfare Team to see if you are eligible*

Go Explore

We want to make sure your journey to college is as easy as possible. Our adult learners have access to our Go Explore travel pass and a travel bursary to help with the cost of travel (subject to eligibility).

You can explore all the great places in Greater Manchester with a Go Explore travel pass. So not only do you get to travel to a fantastic college, but you also get to explore Greater Manchester.

If you are on a low income and studying on a substantial programme of 10 hours or more per week you can apply for support with the cost of travel. The travel award will be provided based on eligibility. Payments and support may stop if attendance falls below college expectations.

If you live outside the Greater Manchester area or are studying under the 10-hour threshold and need travel support, you can apply in writing to the Bursary Team explaining why you wish to be considered for travel support. All applications are reviewed and awarded by the Bursary Appeals Panel.

19 – 24 Unwaged Learners

If you are aged 19 – 24, unwaged, and studying on a Level 1 or Level 2 programme you may be eligible for support if you have a signed declaration from a parent/ guardian, confirming that they do not financially support you for educational purposes (eligibility criteria apply).

Childcare

We understand that you may have to juggle your studies around family commitments, and we can support you with childcare costs while you are studying with us, subject to eligibility as detailed below.

The maximum childcare funding available will be as follows:

For children aged up to 2 years old:

You will be expected to pay 5% of the nursery place directly to the provider. The College will pay your childcare provider a maximum of £150.00 per week.

For children aged 2 years and under 11 years:

The College will support any additional childcare hours above the Nursery Education Grant hours voucher up to a maximum of £150.00 per week, per child.

You will be expected to pay 5% of the nursery place directly to the provider.

Where you have children both under and over 2 years of age, the maximum that the College will pay is £300 per week.

If you incur any childcare costs before you have official written confirmation from the College that childcare funding has been agreed and you have returned the signed contract, you will be liable to pay the nursery provider.

Am I eligible for the Study Programme Award?

- You may be eligible if your household income is less than £20,000, and you have lived in the UK for at least three years.
- Tuition fee support is available for courses up to and including Level 2 and learners aged 19-23 who already have a full Level 3 qualification.

- Travel awards are dependent on the number of weekly hours of your course and your attendance.
- Travel is also available for Level 3 learners who are on a low income/benefit regardless of age.
- For childcare support, your childcare provider must be registered with Ofsted, and you'll be expected to pay 5% of the cost yourself.
- If you're an EU citizen and you were living in the UK by 31 December 2020, you can apply to the EU Settlement Scheme to continue living here after 30 June 2021. If you want to move to the UK from 1 January 2021, you may need to apply for a visa.

How do I apply?

This will be discussed at the point of enrolment, and you will be asked for evidence of income by showing either a P60 or wage slips. You may also be asked for evidence of residency by showing passports/visas etc.

Other Funding Options

Advanced Learner Loan

If you're aged 19 or over and you're starting a Level 3 or Level 4 course with us, you can take advantage of this loan which can be used to pay some or all the tuition fees for your course.

Greater Manchester Skills Fund

If you're aged over 19 and you haven't previously achieved your first or second Level 3 qualification you will have the opportunity to access a range of courses that will improve your career prospects.

National Skills Fund

If you're aged over 24 and have not previously achieved a Level 3 qualification you could study for free with a range of courses to choose from that will allow you to develop new skills.

Find out more about the different options available to you at tmc.ac.uk/funding.

Additionally, you can listen to our podcast series 'Talking TMC' to hear more about Advanced Learner Loans and the Greater Manchester and National Skills Funds at tmc.ac.uk/podcast.

STUDENT SPOTLIGHT



Stacey Walton
Childhood Studies
Harpurhey Campus

We met with Stacey Walton, a Childhood Studies student on a Level 3 Diploma in Early Years Workforce (Early Years Educator) based at our Harpurhey campus, to find out what it's like to study with us and how she is getting on so far.



Why did you choose this course?

I chose to study a Diploma in Early Years Workforce because I'm passionate about working with early years and with SEND children in particular.

I've always had a natural gravitation to them and found myself able to connect with them and support them. From helping them learn to interact with others to helping them eat – I just love to see them learn! Probably a bit too much - when I see them progress, I nearly end up crying.

What have you enjoyed most about your course?

The course has been amazing, I've loved just how much I've learnt. We do classroom learning at the start of the week and then work on placement at the College's Harpurhey Nursery so it's a well-rounded experience.

I'm dyslexic but I've never struggled thanks to the support I've had from tutors and the staff at the Harpurhey Nursery. They've helped to get the information into my head better and I've never felt uncomfortable asking for help, I've felt welcome to express myself.

When I first started I was apprehensive about being thrown in the mix with younger students also on placement at the Nursery, but they've all been lovely too.

Why did you choose The Manchester College?

Both my children studied at the College. My son is a SEND student here and there has always been so much support for them both, so when I decided to return to education myself, I trusted the College.

I also found that The Manchester College had more on offer in terms of support, placement opportunities and teaching quality than what was on offer at other adult learning centres.

What are your plans for after the course?

I'm currently a student but also an employee at the College's Harpurhey Nursery – standing in for someone on maternity leave. In the future I hope to gain permanent employment with The Manchester College Nurseries as I've built such a relationship with the children here and I would want to carry on caring for them.

Would you recommend The Manchester College?

Yes! I'm always telling people to enrol, in fact I'm currently helping someone enrol in a Textiles course. The learning is outstanding, support is always there if needed and I'm comfortable with The Manchester College.

If you want to pursue a career in Childhood Studies like Stacey, we offer courses from Level 1 to Level 3, see page [18] for details.



STRIKING A HEALTHY LIFE BALANCE

Our Careers and Welfare team offer some advice, guidance and tips on wellbeing and how to get the right balance between achieving your career goals and managing your personal life.

We appreciate that our lives are finely balanced between work and life commitments and our responsibilities with loved ones. The pressure to live up to these expectations can become overwhelming at times, so we can understand how prioritising your education may have been put on the backburner. However, we have seen first-hand how self-development, working towards your goals and being passionate about doing something for yourself can be life changing and well worth the commitment.

It's all about finding a healthier life balance. But where do you begin?

Five Ways to Wellbeing

Evidence from the New Economics Foundation found 'Five Ways to Wellbeing' that can improve mental health and overall wellbeing. These five steps are recommended by organisations including the NHS and Mind, as they can help us feel more positive and able to get the most out of our life.

1. Connect

By actively connecting with people around us, we gain a sense of belonging and improve our self-worth. By dedicating time to meet a friend for dinner, joining a group or reaching out to a lost contact we can share positive experiences, provide support, and feel important and valued.

2. Be Active

There is a link between physical fitness and positive mental health. By being active and making time for walking, dancing, and engaging in activities we enjoy we can improve our self-esteem, set and achieve goals, and change the chemical balance in our brain that improves our mood.

3. Take notice

Noticing our thoughts, feelings and surroundings helps us pay attention to our needs and stay present. Taking time out to soak up the world around us by visiting the park, reflecting on what we are grateful for, or dedicating time for a mindfulness activity allows us to step out of our busy lives and prioritise what is important to us.



4. Keep learning

Learning is a great way to meet new people and boost your self-confidence. Research shows learning new skills can help you build a sense of purpose and set targets to achieve goals. Learning can take place in many ways, from playing an instrument and baking a cake, to creating a garden or learning a language. Learning is only limited to your imagination.

5. Give

The act of giving and kindness has been shown to improve mental wellbeing by increasing our positive feelings and sense of reward, helping us to connect and giving us a sense of purpose and self-worth. The act of giving can be large or small and can include giving time by volunteering or contributing to a cause. Saying thank you, listening to a friend or offering to lend a hand are all acts of giving too.

By introducing these five ways of wellbeing we can begin to move towards a healthy life balance.

- If you are feeling overwhelmed, it is important to know that you are not alone. As a student at The Manchester College, our dedicated staff are on hand to help.
- Our Student Experience Team provide enrichment activities on campus, help with access to mental health practitioners and referrals to counselling services.
- Speak with your mentor if you feel under pressure. Our mentors are here to support you with any difficulties you may be experiencing that may affect your studies.
- Our Careers and Welfare team can signpost you to services, agencies and activities such as volunteering, employment experiences, childcare support.
- Library services have a rich source of opportunities to learn and assist with new ways of being.

For further reading see some of the useful resources below:

- ➡ 5 Ways to Wellbeing (health-in-mind.org.uk)
- ➡ 5 Steps to Mental Wellbeing - NHS (www.nhs.uk)

OUR COURSES

The following pages list the adult courses we offer, their start dates and the campuses they are delivered at. Entry requirements for your chosen course can be found at **tmc.ac.uk**.

Course Title	Level	Award	Length	Campus	Start date
ACCESS TO HE					
Business	3	Access to HE Diploma	1 year	Shena Simon	September
Business (Pre-Access)	2	Pre Access Certificates	1 year	Shena Simon	September
Careers in Social and Community Work	3	Access to HE Diploma	1 year	Shena Simon	September
Combined and Medical Science	3	Access to HE Diploma	1 year	CityLabs Online	September
Engineering	3	Access to HE Diploma	1 year	CityLabs	September
English, Writing and Media	3	Access to HE Diploma	1 day	Shena Simon	September
Environmental Science	3	Access to HE Diploma	1 year	Shena Simon	September
Health and Physiotherapy	3	Access to HE Diploma	1 day	Shena Simon	September
Health and Social Care Professions	2	Pre Access Certificates	1 year	Shena Simon	September
History and Archaeology	3	Access to HE Diploma	1 year	Shena Simon	September
Hospitality, Leisure and Tourism	3	Access to HE Diploma	1 year	Shena Simon	September
Humanities	3	Access to HE Diploma	1 day	Shena Simon	September
Law, Politics and Society	3	Access to HE Diploma	1 day	Shena Simon	September
Medicine, Dentistry and Pharmacy	3	Access to HE Diploma	1 year	CityLabs	September
Nursing and Midwifery	3	Access to HE Diploma	1 year	Shena Simon	September
Radiography; Orthotics and Prosthetics	3	Access to HE Diploma	1 year	CityLabs	September
Skills for Further Learning and Employment in Humanities (Pre-Access)	2	Extended Certificate	1 year	St John's	September
Skills for Further Learning and Employment in Science and Engineering (Pre-Access)	2	Extended Certificate	1 year	CityLabs	September
Social Science	3	Access to HE Diploma	1 year	Shena Simon	September
Teacher Education	3	Access to HE Diploma	1 year	Shena Simon	September
Veterinary Science and Zoology	3	Access to HE Diploma	1 year	Shena Simon	September
AUTOMOTIVE					
ATA Light Vehicle	1	Personal and Professional Development	1 day	Openshaw	September
ATA Body/Paint/Met Pre-test	2	Personal and Professional Development	1 day / half day	Openshaw	April May
ATA Body/Paint/Met Referral	2	Personal and Professional Development	1 day	Openshaw	May June
ATA Refrigerant Handler	2	Personal and Professional Development	1 day	Openshaw	August

ATA Senior MET*	3	Personal and Professional Development	1 day 2 days	Openshaw	April May
ATA Senior Panel*	3	Personal and Professional Development	1 day	Openshaw	April May
Auto-Electrical and Mobile Electrical	2	Diploma	1 year	Openshaw	September
Auto-Electrical and Mobile Electrical	2	Diploma	6 weeks	Openshaw	April June
Auto-Electrical	3	Diploma	6 weeks	Openshaw	August
Auto-Electrical and Mobile Electrical Principles	3	Diploma	1 year	Openshaw	September
Basic Vehicle Checks	Entry	Personal and Professional Development	1 day	Openshaw	December June
Classic Vehicle Restoration Principles	2	Diploma	1 year	Openshaw	September
Electric/Hybrid Vehicle Routine Maintenance Activities	2	Award	1 week	Wythenshawe	August
Light Vehicle Maintenance and Repair Principles	3	Diploma	1 year	Openshaw	September
MOT Tester	3	Personal and Professional Development	1 day	Wythenshawe	August
Paint Technician	-	Personal and Professional Development	1 day	Openshaw	June August
Panel Technician*	2	Personal and Professional Development	2 days	Openshaw	August
Refrigerant Handler	-	Personal and Professional Development	1 day	External	April
Resistance Spot Welding	2	Personal and Professional Development	1 day	Openshaw	June
Senior Paint	3	Personal and Professional Development	1 day	Openshaw	April May
Senior Panel Technician	3	Personal and Professional Development	2/3 days	Openshaw	April May June
Transport Maintenance	1	Diploma	1 year	Openshaw	September
Vehicle Accident Repair	1	Diploma	1 year	Openshaw	September
Vehicle Accident Body Repair	2	Diploma	1 year	Openshaw	September
Vehicle Accident Body Repair Principles	3	Diploma	1 year	Openshaw	September
Vehicle Fitting Principles	2	Diploma	1 year	Openshaw	September
BUSINESS AND PROFESSIONAL					
ACCA Corporate and Business Law	6	Personal and Professional Development	12 weeks	Shena Simon	September
ACCA Taxation	6	Personal and Professional Development	12 weeks	St John's	April
Accounting	2	Foundation Certificate	24 weeks	Shena Simon	April
Accounting	3	Advanced Diploma	1 year	Shena Simon	April
Accounting	4	Professional Diploma	54 weeks	Shena Simon	September
Accounting Book Keeping	1	Award	12 weeks	Shena Simon	September January April
Accounting Software	1	Access Award	12 weeks	Shena Simon	September December
Business Administration	2	Certificate	1 year	Shena Simon	September
Business	1	BTEC Introductory Award	16 weeks	Shena Simon	September
Conveyancing Law and Practice	4	Diploma	2 years	Shena Simon	September
Conveyancing Law and Practice	6	Diploma	2 years	Shena Simon	September
ILM Leadership and Management	5	Certificate	18 weeks	Shena Simon	September
ILM Leadership And Management Skills	3	Award	6 weeks	Shena Simon	September
ILM Leadership And Management Skills	3	Certifcate	12 weeks	Shena Simon	September
Legal Studies	2	Award	17 weeks	Shena Simon	September February
NALPS Paralegal Practice	3	Diploma	1 year	Shena Simon	September
NALPS Paralegal Studies	4	Diploma	2 years	Shena Simon	September
Starting a Small Business	2	Personal and Professional Development	12 weeks	Shena Simon	September January April

* Must have relevant employment

CHILDHOOD STUDIES					
Caring for Children	1	Diploma	1 year	Harpurhey Wythenshawe	September
Childcare and Education	3	Diploma	2 years	Openshaw	September
Early Years Practioner	2	Diploma	1 year	Openshaw	September
Emergency First Aid in the Workplace	3	Award	1 week	Harpurhey Openshaw Wythenshawe	September
Emergency Paediatric First Aid	3	Award	1 day	Harpurhey Openshaw Lightbowne Neighbourhood Nursery Wythenshawe	September
Supporting Teaching and Learning	2	Certificate	1 year	Openshaw	September
Supporting Teaching and Learning	3	Diploma	1 year	Openshaw	September

COMPUTING AND DIGITAL					
Business Processes	3	BTEC Award	14 weeks	City Campus	September February
CCNA Instructor Training	-	Personal and Professional Development	12 weeks	City Campus	September
CCNA/CCENT - Introduction to Networks	-	Personal and Professional Development	14 weeks	City Campus	September
CCNA/CCENT - Scaling Networks	-	Personal and Professional Development	14 weeks	City Campus	September
CISCO Network Security	-	Personal and Professional Development	10 weeks	City Campus	September February
Cloud Services	3	Award	15 weeks	City Campus	September February
Coding Practices	3	Certificate	30 weeks	City Campus	September
Computing Principles	3	Diploma	1 year	City Campus	September
Cyber Security Practices	-	Certificate	24 weeks	City Campus	September
Essential Digital Skills	1	Essential Digital Skills	12 weeks	City Campus	September
HTML and CSS for Beginners	-	Personal and Professional Development	10 weeks	City Campus	October
Introduction to Project Management	-	Personal and Professional Development	10 weeks	City Campus	April
Network and Architecture	3	Award	12 weeks	City Campus	September January April
Network Engineering	3	Diploma	1 year	Openshaw	September

NURSERY PLACES AVAILABLE

FOR CHILDREN UNDER FIVE

LIGHTBOWNE NEIGHBOURHOOD NURSERY
AND HARPURHEY NEIGHBOURHOOD NURSERY

MONDAY – FRIDAY | 8AM – 6PM

LIMITED PLACES AVAILABLE,
BOOK NOW!



 tmc.ac.uk |  0161 205 3646



Nursery Education Grant (NEG) places available for 2-4 year olds. Ofsted registered.

Oracle SQL	-	Personal and Professional Development	10 weeks	City Campus	October
Principles of Coding	3	BTEC Award	14 weeks	City Campus	September February
Programming With C#	-	Personal and Professional Development	10 weeks	City Campus	September January April
Python for Beginners	1	Personal and Professional Development	8 weeks	Openshaw	October
Technical Certificate in IT Support	2	BTEC Technical Certificate	24 weeks 1 year	Openshaw St John's	September

CONSTRUCTION AND ENGINEERING					
2D CAD - Advanced	-	Personal and Professional Development	3 days	Openshaw	April May
2D CAD - Beginners	-	Personal and Professional Development	3 days	Openshaw	April May
2D CAD - Intermediate	-	Personal and Professional Development	2 days	Openshaw	April May
BAFSA Fire Sprinklers	2	Certificate	1 year	Wythenshawe	May December
BAFSA Sprinkler Installation	2	Certificate	1 year	Openshaw	August
BPEC Solar Thermal Systems	-	Personal and Professional Development	1 week	Openshaw	August
BPEC Water Regulations	1	Personal and Professional Development	1 year	Openshaw	August
Carpentry and Joinery	1	Diploma	1 year	Openshaw	September November
Carpentry and Joinery	3	Advanced Technical Diploma	1 year	Openshaw	September
Certificate in Domestic Energy Assessment	3	Certificate	1 year	Wythenshawe	April May June July
Certificate in Environmental Sustainability	3	Certificate	1 year	Wythenshawe	September
Certificate for Retrofit Assessors	3	Certificate	1 year	Wythenshawe	April May June July
Domestic Hot Water Vent and Unvent	-	Personal and Professional Development	1 day	Openshaw	August
Electrical Installation	3	Advanced Technical Diploma	1 year	Openshaw	September
Electrical Installations	2	Diploma	1 year	Openshaw	September November
Installation and Maintenance of Solar Thermal Hot Water Systems (free*)	3	Award	3 days	Wythenshawe	April May June July
Legionella's Training	-	Personal and Professional Development	1 week	Openshaw	August
National Foundation Diploma in Construction and the Built Environment	3	Diploma	1 year	Wythenshawe	September
Plumbing Studies	1	Diploma	1 week	Openshaw	April May June July
Plumbing	2	Technical Certificate	1 year	Openshaw Wythenshawe	September
Plumbing	3	Advanced Technical Diploma	1 year	Openshaw	September
Rain Water Harvesting	-	Personal and Professional Development	1 day	Wythenshawe	August
Site Carpentry	2	Diploma	1 year	Openshaw	September

*Free to plumbers or those who are employed and have a Greater Manchester postcode as part of the GM Skills for Growth Programme.

CREATIVE AND DIGITAL MEDIA					
An Introduction to Photoshop	-	Personal and Professional Development	8 weeks	City Campus	September
An Introduction to DSLR Photography	2	Personal and Professional Development	6 weeks	City Campus	September
Photoshop for Photographers	-	Personal and Professional Development	8 weeks	City Campus	September

ENGLISH AND MATHS					
Functional English	E1 1 2	Personal and Professional Development	Minimum 24 weeks	Harpurhey Openshaw Wythenshawe	September
Functional Maths	E3 1 2	Personal and Professional Development	Minimum 24 weeks	Harpurhey Shena Simon** Wythenshawe	September
GCSE English Language	GCSE	Personal and Professional Development	1 year	Shena Simon	September
GCSE Mathematics	GCSE	Personal and Professional Development	1 year	Shena Simon	September

ESOL					
ESOL for Beginners	Pre-Entry	Preparation for work and life	Minimum 24 weeks	Harpurhey Openshaw Shena Simon** Wythenshawe	September
ESOL Elementary	E1	Preparation for work and life	Minimum 24 weeks	Harpurhey Openshaw Shena Simon** Wythenshawe	September
ESOL Pre-Intermediate	E2	Preparation for work and life	Minimum 24 weeks	Harpurhey Openshaw Shena Simon** Wythenshawe	September
ESOL Intermediate	1	Preparation for work and life	Minimum 24 weeks	Harpurhey Openshaw Shena Simon** Wythenshawe	September
ESOL Advanced	2	Preparation for work and life	Minimum 24 weeks	Harpurhey Openshaw Shena Simon** Wythenshawe	September

HAIR AND BEAUTY					
Barbering	2	Diploma	1 year	Harpurhey	September
Barbering	3	Diploma	1 year	Harpurhey	September
Beauty Therapy	2	Diploma	1 year	Harpurhey	September
Beauty Therapy Massage	3	Diploma	1 year	Harpurhey	September
Curly Blow Dry	-	Personal and Professional	1 day	Harpurhey	
Gel Polish	-	Personal and Professional	1 day	Harpurhey	November
Hairdressing and Barbering	1	Certificate	19 weeks	Harpurhey	September
Ladies Hairdressing	2	Diploma	1 year	Harpurhey	September
Nail Services	2	Diploma	28 weeks	Harpurhey	September
Nail Technology	3	Diploma	1 year	Harpurhey	September
Nail Technologies	3	Extended Diploma	1 year	Wythenshawe	September
Permanent Hair Removal and Skin Rejuvenation	4	Diploma	1 year	City Campus	September
Salon Management	4	Diploma	1 year	City Centre	September
Swedish Massage	3	Certificate	16 weeks	Harpurhey	September
Women's Hairdressing	2	Diploma	1 year	Harpurhey	September
Women's Hairdressing	3	Diploma	1 year	Harpurhey	September

** Campus locations are subject to change

HEALTH AND SOCIAL CARE					
Awareness of Substance Misuse	1	Award	3 weeks	Openshaw	April
Counselling Concepts	2	Award	10 weeks	Fielden (April only) Shena Simon	April September
Counselling Skills	3	Certificate	1 year	Shena Simon	September
Employability and Professional Development	1	Award	1 year	Harpurhey Openshaw	November
Health and Social Care	1	Introductory Certificate	18 weeks	Harpurhey Openshaw	September
Health and Social Care	1	Introductory Diploma	1 year 18 weeks	Harpurhey Openshaw	September
Health and Social Care	1	Introductory Award	7 weeks	Harpurhey Openshaw	September
Health and Social Care	2	Certificate	24 weeks	Openshaw	September
Health and Social Care	2	Extended Certificate	1 year 36 weeks	Openshaw	September
Health and Social Care	2	Technical Diploma	1 year	Openshaw	September
Health and Social Care	3	Diploma	1 year 720 Guided Learning Hours	Openshaw	September
Health and Social Care	3	Diploma	1 year 510 Guided Learning Hours	Openshaw	September
Introduction to Employment in Health and Social Care	2	Personal and Professional Development	3 weeks	Openshaw	May
Mental Health Awareness	1	Award	4 weeks	Openshaw	May
Nutrition and Health	1	Award	24 weeks	Harpurhey Openshaw	December
People Moving People	2	Personal and Professional Development	3 days	Openshaw	June
Prevention and Control of Infection	2	Award	6 weeks	Openshaw	September
Safeguarding Adults Awareness	2	Personal and Professional Development	1 week	Openshaw	March
Safeguarding Children Awareness	2	Personal and Professional Development	Half Day	Harpurhey Openshaw	June

HOSPITALITY AND CATERING					
Bakery and Patisserie	2	Diploma	1 year	Harpurhey Wythenshawe	September
Cakes, Bakes and Treats	-	Personal and Professional Development	6 weeks	Fielden (April) City Campus (September) Harpurhey	April September
Cake Decoration (Basic)	-	Personal and Professional Development	10 weeks	Fielden (April) City Campus (October) Harpurhey	April October
Cake Decoration (Intermediate)	-	Personal and Professional Development	10 weeks	Fielden (April) City Campus Harpurhey	April October
Chocolate	2	Personal and Professional Development	3 weeks	City Campus	October
Culinary Skills	1	Award	13 weeks 14 weeks 23 weeks	Harpurhey Wythenshawe	September
Culinary Skills	2	Diploma	1 year	Harpurhey Wythenshawe	September
Culinary Skills	2	Technical Certificate	1 year	Harpurhey Wythenshawe	September
Gluten Bakery	-	Personal and Professional Development	6 weeks	City Campus	October
Introduction to Food and Beverage	1	Certificate	22 weeks	Harpurhey Wythenshawe	November
Patisserie and Confectionery	3	Diploma	1 year	City Campus	September
Professional Food and Beverage Service	2	Diploma	1 year	Harpurhey Wythenshawe	September
Professional Cookery	3	Diploma	36 weeks	Harpurhey Wythenshawe	August

Professional Cookery	3	Advanced Technical Certificate	1 year	Harpurhey Wythenshawe	September
Professional Culinary	4	Diploma	56 weeks	City Campus	September
Professional Patisserie and Confectionery	3	Diploma	1 year	Harpurhey Wythenshawe	September
The Art of Vegan Baking	-	Personal and Professional Development	6 weeks	City Campus	October

LOGISTICS					
CPC 1 Day Training: 7 Hours	-	Personal and Professional Development	1 day	Wythenshawe	Various
MOD3 Resit 4 Hours and Test	1	Personal and Professional Development	1 day	Wythenshawe	Various
MOD3 Resit 8 Hours and Test	1	Personal and Professional Development	1 day	Wythenshawe	Various
MOD3 Resit 12 Hours and Test	1	Personal and Professional Development	2 days	Wythenshawe	Various
NVQ Road Passenger Vehicle Driving (Taxi and Private Hire)	2	Certificate	1 year	Wythenshawe	Various
Rigid Cat C (Inc Test)	-	Personal and Professional Development	2 weeks	Wythenshawe	Various
Skills, Further Learning, Employment and Professional Development: FLT	E3 Cert, LI Dip	Entry Certificate and Diploma	2 weeks	Wythenshawe	Various
Skills, Further Learning, Employment and Professional Development: LGV	E3 Cert, LI Dip	Entry Certificate and Diploma	3 weeks	Wythenshawe	Various
Skills, Further Learning, Employment and Professional Development: Taxi	E3 Cert, LI Dip	Entry Certificate and Diploma	7 weeks	Wythenshawe	Various
Skills, Further Learning, Employment and Professional Development: WHS	E3 Cert, LI Dip	Entry Certificate and Diploma	5 weeks	Wythenshawe	Various
Skills for Working in Transport and Logistics Industries	1	Certificate	1 year	Wythenshawe	September
Skills for Working in Transport and Logistics Industries	2	Certificate	1 year	Wythenshawe	September
Taxi Knowledge	1	Personal and Professional Development	7 weeks	Wythenshawe	Various

MUSIC					
DJ Experiences	-	Personal and Professional Development	2 weeks	Shena Simon	June August
Music Production	1	Award	12 weeks 16 weeks	City Campus	September January
Music Production	2	Certificate	12 weeks 14 weeks	City Campus	September January
Music Technology and Production	3	Diploma	1 year	City Campus	September
Turntablism (Scratch Techniques)	-	Personal and Professional Development	2 weeks	Shena Simon	June August

PERFORMING ARTS					
Acting	2	Award	20 weeks (Part-time evenings)	City Campus	September / February

SPORT					
Gym Instructing and Personal Training	3	Diploma	26 weeks	Openshaw	September
Instructing Circuit Sessions	2	Award	2 weeks	Openshaw	May
Personal Training	3	Diploma	14 weeks	Openshaw	May September

SUPPORTED LEARNING					
Supporting Learners with Dyslexia	3	Award	10 weeks	Openshaw	November
Teaching Learners with Dyslexia	5	Diploma	30 weeks	Shena Simon	October

TEACHER EDUCATION					
Assessing Competence in the Work Environment	3	Award	1 year	External	October
Assessing Vocational Achievement	3	Certificate	1 year	External	October
Assessing Vocationally Related Achievement	3	Award	1 year	External	August
Award in Education and Training	3	Award	12 weeks	TBC	September

Internal Quality Assurance of Assessment Process and Practice	4	Award	1 year	External	August
Leading in Internal Quality Assurance of Assessment Process and Practice	4	Certificate	1 year	External	August
Understanding the Principles and Practices of Assessment	3	Award	26 weeks	External	August
Update for Assessor Qualifications	3	Personal and Professional Development	1 day	Fielden	August
Understanding the Internal Quality Assurance of Assessment Processes and Practice	4	Award	26 weeks	External	August
Update for IQA Qualifications	4	Personal and Professional Development	1 day	Fielden	August

THEATRICAL AND MEDIA MAKE UP					
Fashion and Photographic Make-up	3	Award	14 weeks	Harpurhey	September
Fashion Theatre and Media Make-Up Studies	3	Personal and Professional Development	1 year	Harpurhey Wythenshawe	September
Hair and Media Make-up Artistry	2	Diploma	1 year	Harpurhey	September
Hair and Media Make-up Studies	2	Diploma	1 year	Harpurhey Wythenshawe	September
Theatrical and Media Make-up	3	Diploma	1 year	Harpurhey Wythenshawe	September

TRAVEL, TOURISM AND AVIATION					
Air Cabin Crew	2	Certificate	22 weeks	Harpurhey Wythenshawe	September
Aviation Operations	3	Diploma	1 year	Harpurhey Wythenshawe	September
Aviation Operations	3	Subsidiary Diploma	1 year	Harpurhey Wythenshawe	September
Aviation Operations	3	Extended Diploma	1 year	Harpurhey Wythenshawe	September
Cabin Crew	2	Diploma	1 year	Harpurhey Wythenshawe	September
Exploring the Aviation Industry	1	Certificate	13 weeks 1 year	Harpurhey Wythenshawe	September
Travel and Tourism	2	Award	10 weeks	Harpurhey Wythenshawe	September
Travel and Tourism	2	Certificate	22 weeks	Harpurhey Wythenshawe	November
Travel and Tourism	2	Diploma	1 year	Harpurhey Wythenshawe	September
Travel and Tourism	3	Introductory Diploma	1 year	Harpurhey Wythenshawe	September

NORTH AND SOUTH MANCHESTER STUDIO OF HAIRDRESSING, BEAUTY AND MAKE-UP

OPEN MONDAY – FRIDAY

Get a fresh cut, a trending style, an amazing make-over or enjoy a relaxing pampering session from the next generation of hairdressers, barbers, make-up artists and beauty therapists in our fully equipped, professional standard studios.

- Barbering
- Cut and blow dry
- Facials
- Full body massage

- Gel nail and nail art
- Hair treatment and colouring
- Manicure and pedicure
- IPL and hair removal

VISUAL ARTS					
Art and Design - Photography	2	Diploma	1 year	City Campus	September
Art and Design	3	Foundation Diploma	1 year 2 years (part-time)	City Campus	September
Art and Design	3	Foundation Diploma	2 years	City Campus	September
Creative Craft - Jewellery	1	Award	27 weeks	City Campus	September January
Creative Craft - Jewellery	2	Award	27 weeks	City Campus	September January
Fashion and Textiles/pattern cutting and construction	1	Award	16 weeks 1 year	Shena Simon	September January
Fashion and Textiles/pattern cutting and construction	2	Certificate	16 weeks 1 year	Shena Simon	September January
Fashion and Textiles/pattern cutting and construction	3	Certificate	16 weeks 1 year	Shena Simon	September January
Introduction to Etching and Printmaking	-	Personal and Professional Development	10 weeks	City Campus	October

FIND YOUR COURSE AND APPLY ONLINE

To apply to The Manchester College, you will need to use our online application portal:
apply.tmc.ac.uk

You will be asked to create an account using an active email address and to set up a password. Once you have set up an account you will be able to track your application and subsequently enrol.

Once you have applied, and depending on the requirements of the course, you will receive a conditional offer of a place at the College via the applicant portal.

You can also update your details and let the College know if you wish to accept or decline your offer of a place within the portal.

ADULT COURSE LOCATIONS FROM SEPTEMBER 2022

As we upgrade our campuses throughout 2022 our course locations will be as per the table below from September 2022.

COURSES	CITY CAMPUS MANCHESTER	SHENA SIMON	OPENSHAW	HARPURHEY	WYTHENSHAW	BSS SEMINARY
Animal Care					•	
Automotive			•		•	
Business and Professional		•				
Care Professions			•	•	•	
Counselling		•				•
Computing and Digital	•			•		
Construction			•		•	
Creative and Digital	•					
Engineering			•			
ESOL		•	•	•	•	
Hair and Beauty				•	•	
Health and Social Care			•	•		
Hospitality and Catering	•			•	•	
Logistics					•	
Music	•					
Performing Arts	•					
Pre-Employment		•		•	•	
Sport and Public Services			•			
Supported Learning			•			
Teacher Education						
Travel and Tourism				•	•	
Visual Arts	•					•



Find out more here

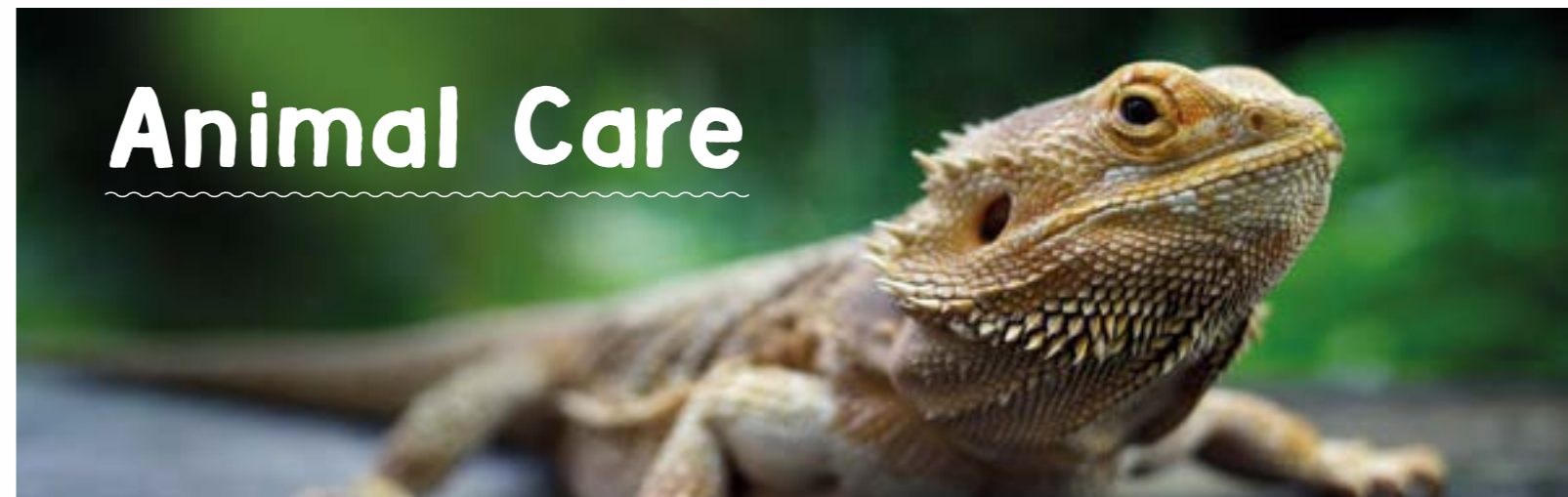
NEW TO WYTHENSHAW THIS SEPTEMBER!

- Animal Care
- Theatrical Media Make-up
- Hair and Beauty

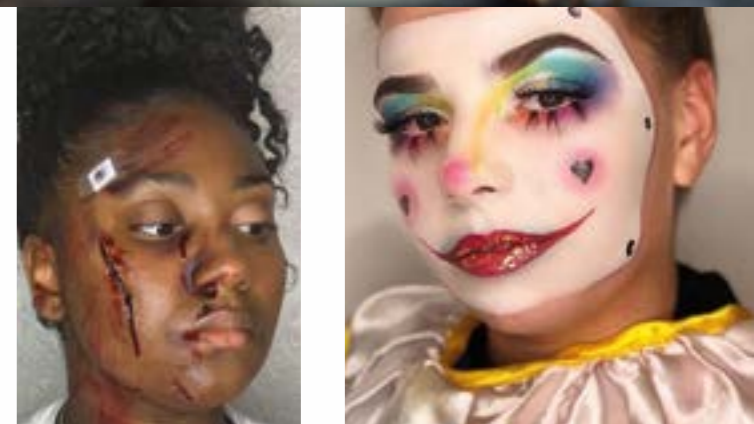


GO FURTHER AT THE MANCHESTER COLLEGE

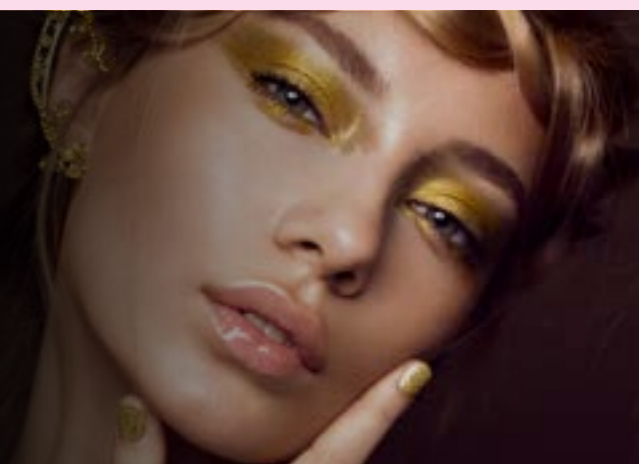
Animal Care



THEATRICAL AND MEDIA MAKE-UP



HAIR AND BEAUTY



APPLY NOW



LEADERS IN PROFESSIONAL TRAINING

Choose from our wide range of professional training programmes to help you excel in your career.



Approved centre

Human Resources

CIPD Foundation Certificate in People Practice (Level 3)

CIPD Associate Diploma in People Management (Level 5)

CIPD Associate Diploma in Organisational Learning and Development (Level 5)

CIPD Advanced Diploma in Strategic People Management (Level 7)

CIPD Advanced Diploma in Strategic Learning and Development (Level 7)



Management and Leadership

CMI Level 3 Diploma Principles of Management and Leadership

CMI Level 5 Diploma in Management and Leadership



Property Agency

- Residential Lettings and Property Management
- Residential Inventory Management and Tenancy Deposits
- Real Property Auctioneering
- Sale of Residential Property
- Commercial Property Agency
- Property Agency in Scotland



Accredited

Project Management

Level 4 Qualification on Project Management



SQA Approved Centre

Property Law

Short Course Short Course Conveyancing: An Introduction for Property Professionals

FOR MORE INFORMATION, CONTACT OUR PROGRAMME ADVISORS ON:

☎ 0333 242 9787 ✉ enquiries@mollearn.com 🌐 www.mollearn.com








Lead the future with a Total People apprenticeship

If you want to work, earn and learn all at the same time, then an apprenticeship could be your perfect step towards a rewarding career!

Our apprenticeships range from Level 2 to Level 5 and beyond, giving you the opportunity to eventually complete a degree level apprenticeship, fully funded and without any associated student debt.

We offer apprenticeships in the following areas:

-  **Accounts**
-  **Engineering**
-  **Business and Administration**
-  **Hair and Barbering**
-  **Commercial Vehicle**
-  **Healthcare**
-  **Construction**
-  **Hospitality**
-  **Customer Service**
-  **HR**
-  **Dental**
-  **Management**
-  **Education and Early Years**
-  **Pharmacy**
-  **Electrical**
-  **Property**

Get in touch

Find out more about our apprenticeships or register with us at totalpeople.co.uk or by calling **03333 222 666**.



BELIEVE IN DIFFERENT

LEARN DIFFERENT

EXPERIENCE DIFFERENT

BE DIFFERENT

APPLY TODAY | [UCENMANCHESTER.AC.UK](https://ucenmanchester.ac.uk)

We're born and bred in Manchester and for more than three decades we have delivered first degree-level courses.

Back then we were part of The Manchester College, but in 2018 we took a leap to become UCEN Manchester and create something new to provide an offer that was different: **the quality degree level education of a university with the personal support you'd find in a college.**

Our offer is about combining the best of academic and career-based learning through capped class sizes to ensure you're never lost in the crowd. You won't just learn the theory through writing essays, but spend time learning the hands on, real-world skills you need to thrive in your career, having important, industry relevant conversations with your tutors and peers and learning in a setting that suits you. And no matter your background (whether that's straight from college, returning as a parent, changing career or upskilling in your role) ensuring you're ready for a future career in industry is our number one aim.

OUR OFFER

Faculty of Creative Arts and Media Industries

- The Arden School of Theatre
- Performing Arts School
- Manchester Film School
- School of Creative and Media Arts

Faculty of Higher Technical and Professional Industries

- Counselling and Teacher Education School

School of Health, Social Sciences and Sport

- School of Management, Digital and Engineering
- Construction
- Business
- Computing

Access to Higher Education

- School of Nursing and Medical Sciences
- Business, Humanities and Technologies School

WE DO THAT BY:

- Employing tutors with current or previous industry experience and connections, so you know you're getting the skills from someone who's already done or is still doing it
- Offering courses with a clear employment outcome (you'll see most of them have a specific title) and a clear focus on preparing you to excel
- Keeping classes small so there's always room for you to ask questions, get answers and make close connections with your peers, tutors, support teams and importantly - industry
- Offering award winning support to our students

Courses available to start this September, apply now:





The Manchester College



tmc.ac.uk



@TheMcrCollege



03333 222 444



@TheMcrCollege

The Manchester College is committed to equality of opportunity, non-discriminatory practices and supporting individual learners.

This information is also available in a range of formats, such as large print, on request.

All information in this brochure was correct at the time of print.