

Animal Management



Contents

It starts with you	3
Careers information	4
What our students say	6
Meet the team	8
Our location	10
Our animals	12
Get career ready with us	14
T Levels	16
Courses	20
Supported learning	22
Accelerate2industry	24
How to apply	26
What's next?	27



It starts with you

Whether you dream of working with pets, wildlife or exotic creatures, you can start your journey to a great career right here at The Manchester College.

Our Animal Management department is based in new facilities at our Wythenshawe campus and is home to a variety of mammals, birds, reptiles and insects. Here you'll be learning what each one needs to thrive, taking part in hands on activities and studying a wide range of topics, such as animal behaviour, nutrition and conservation.

You don't need any previous experience to enrol on your first course and you'll be supported every step of the way by your tutors. They have a wide range of both practical and theoretical knowledge, as well as industry experience and are incredibly passionate about animals.

There are so many careers open to you and we want to make sure you can gain crucial work experience. You could secure a placement at a vets, pet shop, riding stables, kennels or even the Blue Planet Aquarium.

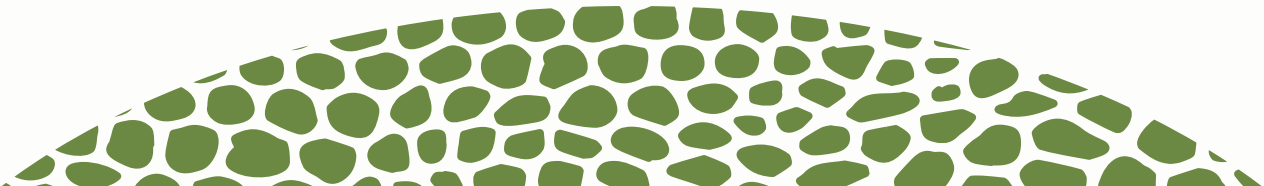
We often invite guest speakers to the College including organisations like Dogs for Good, the RSPCA, Blue Cross and Manchester Museum. They've made a career out of working with animals, and will happily share their advice and tell you about some of the jobs you could apply for when you finish your studies.

You'll have the opportunity to take part in national and international trips to gain field experience in sustainability, environmental practices and data collection.

Plus, you might even get the chance to take trips out to places like Chester Zoo and working farms to hear from even more people who currently work in the industry.

The demand for animal management professionals is increasing every year. If you'd like to become a zookeeper or even travel the world caring for desert, jungle or ocean wildlife, you've come to the right place.

So, what are you waiting for?





Careers information



JOB FIGURES

There were approx. **9,521** employees working in the Animal Management sector in Greater Manchester in 2020, this is predicted to increase by 0.5% by 2025.



AVERAGE EARNINGS

The average wage in GM is **£28,300 per annum (2021)**.



REPLACEMENT DEMAND

15% of the current workforce will be reaching retirement in the next 10 years, meaning those jobs will need replacing.



WORKFORCE SPLIT

Currently **55%** of the workforce are male.

Types of jobs available	Skills needed	Examples of GM employers
Animal Care Worker	Communication	Animal Trust
Assistant Dog Trainer	Customer Service	BioNow
Dog Groomer	Enthusiasm	Medivet Partnership LLP
Farm Worker	Innovation	NHS
Farmer	Leadership	Penguin Recruitment
Pet Store Assistant	Management	Pets at Home
RSPCA Inspector	Planning	SRG Europe
Veterinarian	Problem Solving	The Groom Room
Veterinary Nurse	Research	University of Manchester
Zookeeper	Self-Motivation	Vet Seekers Ltd

Data sourced from Lightcast March 2023.

FIND OUT
MORE HERE





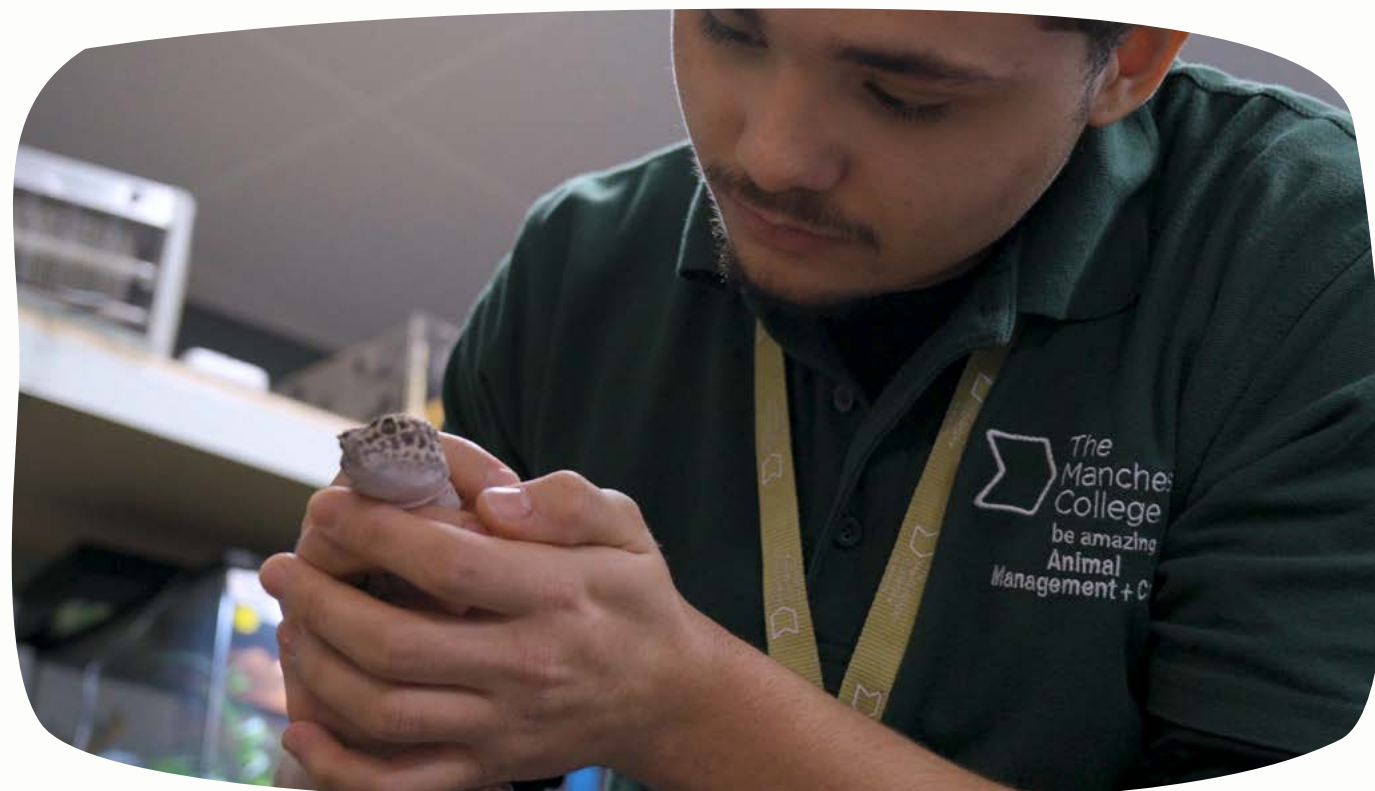
What our students say

I chose to study Animal Management because I really enjoy science, and this course has a lot to do with the biology of different animals.

We have a large variety of species, from reptiles to mammals and aquatics, and I've learned how to handle all different sized animals.

My work placement is at Wythenshawe Park Stables, I enjoy learning how to manage the nutrients of larger animals in enclosures, their needs and behaviours.

Leighton Stewart
Level 3 Animal Management



I had watched a lot of nature documentaries and I wanted to learn what went into keeping the animals healthy and keeping everything clean and this course teaches that.

I've learnt what the 14 health parameters are, and I can bring those to any animal to treat them because it's general so it can be the same for any species.

I plan to go to university to study animal conservation because it brings more knowledge about animals, what can affect them and how animals can affect the environment around them.

Korie Green
Level 3 Animal Management



Meet the team

Our welcoming and supportive tutors are passionate about animals, wildlife and the environment. Each member of the department has a wealth of knowledge and experience in both animal management and teaching.

From working as a Marine Biologist in Australia's Great Barrier Reef to working in British conservation and ecology, you'll learn from their experiences and benefit from their links to the industry.



Julian Smith
Assistant Principal

Julian oversees our Animal Management, Education and Early Years, Health and Social Care, Public Services, Science, Sport, Public Services courses.

With 17 years of experience in further and higher education institutions, including 15 years in managerial and senior leadership roles, Julian brings a wealth of expertise to the position.



Liz Peters
Head of Department

Liz possesses 30 years' experience in the service industries and worked as a manager in a variety of colleges including Bury College, Calderdale College and West Lancashire College.

Liz became Head of Department for Animal Management in 2021 after spending a number of years as Assistant Principal for Service and Retail Industries.

She is passionate about improving the lives and the employability skills of learners in Greater Manchester.

Scan here
to read more
about our tutors



Philip Pownall
Department Team Leader

Philip holds a BSc in Zoology with Animal Behaviour from Bangor University and has over 10 years of experience in the animal management industry. He has worked as a zookeeper at Welsh Mountain Zoo with big cats, primates, birds of prey, alligators, and trained Californian sealions.

He also conducted animal presentations and shows alongside husbandry. Additionally, Philip has experience at a horse sanctuary, training feral horses for rehabilitation. His expertise includes animal behaviour, breeding and genetics, nutrition, and zoo animal health.



Jack Stevens
Head Animal Technician

Jack has 10 years of experience in the animal industry, starting with work experience at a dog training centre during secondary school.

He has worked with various species, including Eurasian wild boar, wallabies, and skunks, and finds the industry highly rewarding. Jack also has experience managing aquatic systems and has been at The Manchester College for 4 years.



Kirsty Munro
Tutor

Kirsty has a BSc (Hons) in Zoo Biology and a MSc in Zoo Conservation Biology and has over 10 years' experience working in the animal management industry.

During her time in the sector, she worked as a zookeeper and in conservation before becoming a tutor at The Manchester College.

Kirsty's specialisms are science, conservation with herpetology, the study of amphibians and reptiles, and grooming.

Our location

Our Animal Management department and its huge variety of animals and habitats is based in new, industry standard facilities at our Wythenshawe campus.

At Wythenshawe you'll be working with everything from rabbits, guinea pigs and chickens, right through to lovebirds, leopard geckos and a royal python. If you love animals, you're in for a real treat.

We passionately believe in helping you reach your goals which is why our Wythenshawe campus provides facilities which match those that you'll work in industry everyday ensuring that - through a range of modern facilities and outdoor spaces - you have an amazing student experience along the way.

In our Industry Excellence Academy for Animal Management you will benefit from new facilities developed specifically for your course including:

- Bespoke exotic and mammal rooms
- Fantastic new outdoor animal pens
- An industry standard food preparation area
- Industry appropriate animal isolation room
- State-of-the-art science equipment.

These amazing facilities will enable you to learn in an environment that matches those that you will work in when you start your career.



1 Wythenshawe Campus
Brownley Rd, Wythenshawe, Manchester, M22 9UH

Our animals

We have more than 100 animals and over 40 different species. They live in a variety of habitats and need different things to keep them healthy and happy. You'll soon be learning all about them, from how to handle a ferret, to which leafy greens to feed a bearded dragon.



- African land snails
- Argentinian horned frog
- Bearded dragons
- Chickens
- Chilean rose tarantulas
- Coati
- Corn snakes
- Fancy mouse
- Ferrets
- Fire bellied toads
- Gargoyle gecko
- Gerbils
- Giant stick insects/macleays
- Greek sour thighed tortoises
- Guinea pigs
- Harvest mice
- Indian stick insects
- King snake
- Leopard geckos
- Madagascar hissing cockroach
- Meerkats
- Milk snake
- Millipedes
- Mississippi mud turtle
- Northern pine snake
- Rabbits
- Royal python
- Sun beetles
- Tanukis
- Tropical fish and cichlid fish



Get career ready with us

We passionately believe in helping you reach your ultimate goal, focusing on your future employability and developing the knowledge, skills and behaviours you will need to have a successful career.

Many of our programmes of study have been co-developed with industry partners. Working so closely with industry partners means you'll benefit from courses that are aligned with current industry skills and demands as well as a range of industry-level activities and lessons.

Once you complete your journey with us you will have the qualifications you need to take the next steps towards an amazing career, as well as the knowledge, skills and behaviours that will help you stand out to future employers.

Study Programmes

We offer qualifications from Level 1 to Level 3, including T Levels.

If you haven't already obtained a Grade 4 GCSE in English or maths, you'll study to work towards achieving this qualification. This is a mandatory requirement and it's also essential you achieve this for many careers.

Employability

To prepare you for your future career, you'll take part in a range of 'employability' activities to equip you with the knowledge and experience of the careers available to you.

You'll be assigned an Employability Co-ordinator and will take part in a wide range of activities that will help you develop the knowledge, skills and behaviours you'll need to thrive in the workplace.

Industry Expertise

You will get the opportunity to take part in masterclasses and lessons delivered by industry experts, visits from guest speakers within the sector and industry-standard projects, that will see you working on the kind of tasks you'd be completing once you begin your career in the animal management industry.

Work Experience or Industry Placement

As part of your course you are required to take on external work experience. We will help you find a suitable placement. While there, you'll help with day-to-day tasks and shadow staff to develop the knowledge, skills and behaviours that are expected in the workplace and broaden your knowledge of the industry.

Previous students have had placements at:

- Animal sanctuaries
- Blue Planet Aquarium
- Formby Woods
- Lyme Park
- Urban Jungle and other pet shops
- Veterinary practices
- Wythenshawe Farm
- Wythenshawe Park Riding Stables.

You may be able to apply for an industry placement offering a longer period of experience with a leading employer, depending on your course.

An industry placement gives you in-depth knowledge of the industry, allows you to gain hands-on experience and gives you an insight into career pathways.

With a placement, you're taking that all important first step onto the ladder; many of our students even go on to gain paid employment with their industry placement employer at the end of the year.

Work Related Activity

There are so many careers that involve working with animals and we want to help you explore as many as possible during your studies.

We organise lots of work-related activities to help you discover more about the opportunities that might be open to you. You could soon be:

- Finding out what it's like to work in the industry, from professionals such as veterinarians, pet shop owners and dog walkers.
- Going on trips to zoos, wildlife parks, kennels or other workplaces to experience some of the environments you could choose to work in.
- Meeting employers and other experts in the animal management sector such as those at Chester Zoo to talk about the wide range of career pathways open to you in the sector
- Taking part in national and international trips to gain field experience in sustainability, environmental practices and data collection.
- Learning from expert pathologists and discover career pathways directly from those in industry
- Attending UCAS progression events to understand routes into the sector.

Study for a Technical Level (T Level) qualification in Animal Care and Management

T Levels are a new two year technical programme that provide you with a high-quality alternative to A Levels.

They have been developed in collaboration with employers and combine theory, practical and classroom learning with a minimum 45 day industry placement. If you opt to take a T Level you will spend 20% of your time on an industry placement and 80% in the classroom.

After completing the course you can progress directly into work, on to a higher apprenticeship or even move on to study a university degree, as T Levels are awarded UCAS points.



T Award

Those successful in gaining a place on a T Level will be eligible for the 'T Award', a package of benefits that includes:

- £300 per year bursary*
- Access to industry standard laptop* (as appropriate)
- Opportunity to take part in exciting college-wide competitions
- Minimum 20% delivery by industry experts
- Minimum 45-day industry placement
- Free branded work wear
- Masterclasses
- Digital upskilling
- Bursary incentive if progressing to UCEN Manchester
- Guaranteed progression to a higher education course at UCEN Manchester
- Use of industry based software
- And much more.

**Subject to requirements including 95% attendance, positive attitude and grade profile.*



Courses

Level 3 | T Level | Animal Management and Science Wythenshawe | Two Years

During your studies you will gain all the skills and core knowledge to be able to enter into a range of animal care and management occupations. You'll develop an understanding of a broad range of issues relevant to the sector including sustainability, environmental legislation, climate change and waste management, principles of biosecurity, ethical principles, principles of customer care, finance and principles of stock management. Alongside your study you will undertake an industry placement within your chosen area to gain on-the-job experience.

By specialising in Animal Management and Science, you will study and work with a range of animals, gaining an underpinning knowledge in the following areas:

- Animal welfare and legislation
- Animal biology and chemistry laboratory experience
- Nutrition, enzymes and microorganisms
- Accommodation and handling
- Histology (the study of microscopic structures and organs)
- Animal behavioural studies, observations and data.

For those who don't meet the entry requirements and would still like to pursue a T Level, there is the option of a one-year Level 2 T Level Foundation Year. This Foundation Year will allow you to gain a qualification and move on to study a T Level the following year.

Level 2 | T Level Foundation Year | Animal Care Wythenshawe | One Year

Our Level 2 course will deepen your knowledge, skills and understanding of animal management.

As well as continuing to build your confidence and skills in feeding and caring for a variety of animals, you'll learn more about keeping them healthy, safe and comfortable.

You'll also start to learn about the basic principles of animal biology and behaviour, ready for when you progress to Level 3.

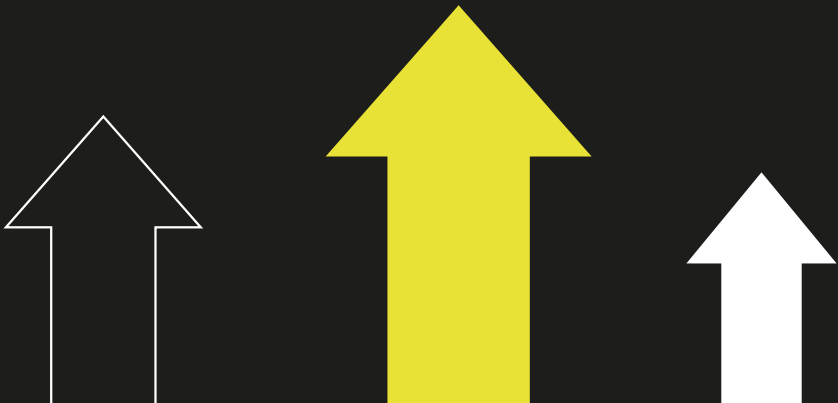
Once you complete the qualification you'll be ready to progress on to the Animal Management and Science T Level the following year.

Jump Start To T Levels

Both our T Level and T Level Foundation Year require you to complete our Jump Start to T Levels programme as an entry requirement.

This programme is a two-week introduction to our T Level and Foundation Year programmes, where you can meet your tutors and experience what studying a T Level at The Manchester College is like.

To apply or find out more about our T Level and T Level Foundation Year programmes, visit our Industry Excellence Academy website: industry-excellence.tmc.ac.uk/t-levels



Courses

All of our courses are designed to prepare you for a wide range of roles working with animals.

You'll gain a greater understanding of lots of different species and learn the practical skills you'll need to care for them properly. As you progress through your journey with The Manchester College, you'll learn advanced animal husbandry skills and cover complex topics such as genetics.

Level 1 | Land-based Studies

One Year | Wythenshawe

If you're interested in a career working with wild or domestic animals and managing our natural environment then this course is perfect for you.

On our Level 1 course you'll focus on building a sound skills and knowledge base across land-based subjects. This will provide you with a good foundation to allow you to progress to further learning and begin to specialise in areas such as animal care.

You'll also gain an understanding of health and safety in the land-based industries and you will go on to study animals in the wild, uses and domestication of animals, handling and restraint and many other aspects of the industry.

Level 2 | Animal Nursing Assistant

One Year | Wythenshawe

Our Level 2 Certificate in Animal Nursing Assistant offers an engaging programme to support you if you want to pursue a career in an animal-related industry.

The course is designed to provide you with an opportunity to develop knowledge, understanding and practical skills relating to veterinary nursing.

It is ideal if you're looking for a full-time course specialising in the veterinary nursing sector, wishing to move onto the T Level in Animal Management and Science and then higher education, or who want to work in the animal industry or envisage a career in animal occupations or animal technical roles.

You will be studying units including how to provide basic nursing to animals, animal anatomy and physiology, principles of infection control and more.

Level 2 | Animal Care (Technical Certificate)

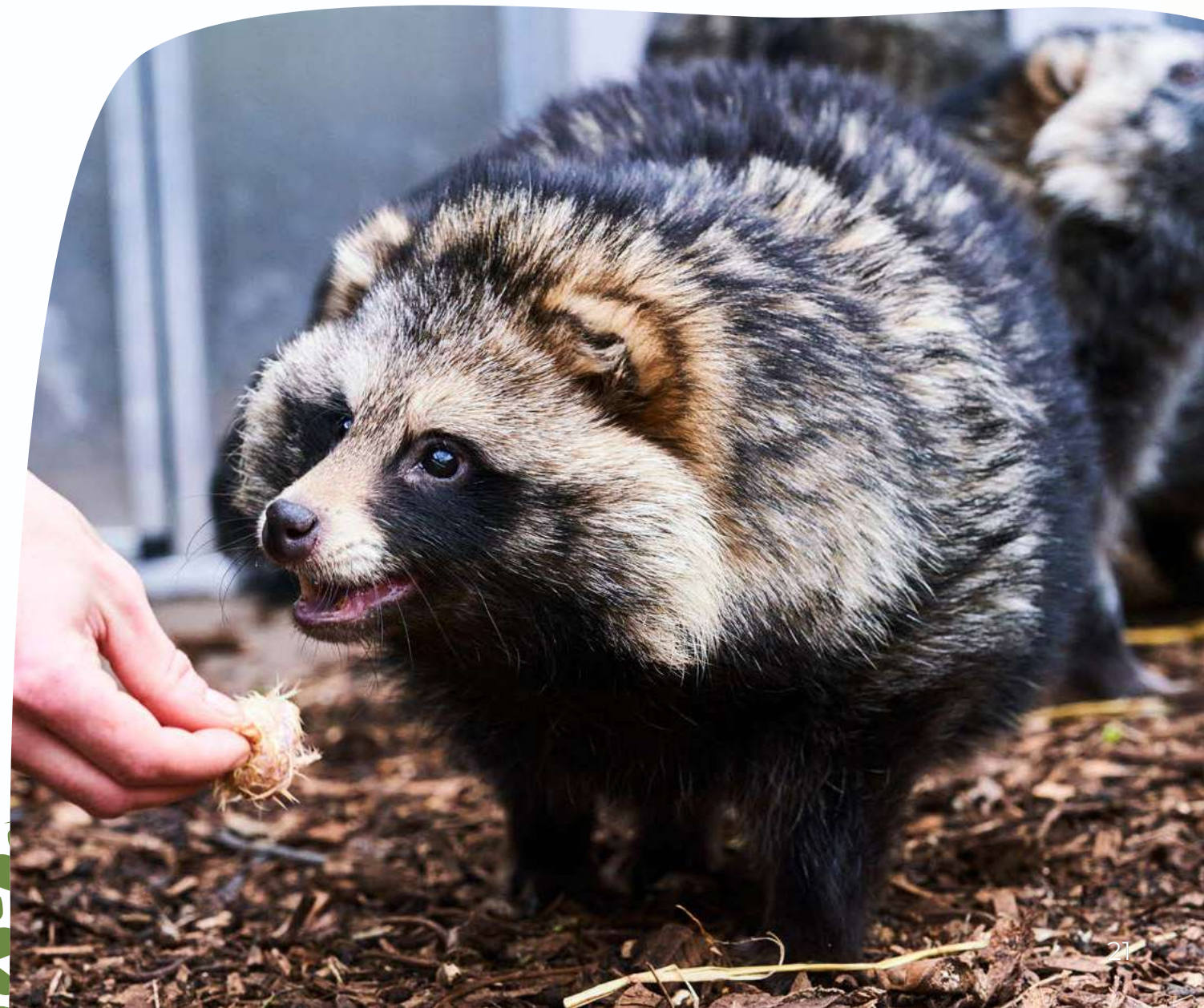
One Year | Wythenshawe

Our Level 2 Technical Certificate in Animal Care offers an engaging programme to support you into a career in an animal-related industry.

If you're looking for a full-time course specialising in the animal management sector and wish to move onto our T Level course, Level 3 or Higher Education, and then want to work in the animal industry then this is the qualification for you.

You'll study units including how to maintain animal health and welfare, animal behaviour and handling, working in the animal care industry and health and safety for the land-based industries.

You'll also have the opportunity to study units around animal breeds and grooming, the principles of animal biology and care of exotic animals.



SUPPORTED LEARNING

Promoting independence
through accessibility and
inclusion

Have you received learning support in the past? Do you have an Education, Health and Care Plan or an identified Special Educational Needs or Disabilities (SEND) need? Our Supported Learning team can help students with SEND to achieve their aspirational career goals.

We provide a highly personalised offer for students to create a supportive learning environment for all. Whatever course you choose to study, our provision is specifically designed to support you on your journey to independence and into further education or employment.

Find out more about how we can help you:
tmc.ac.uk/supported-learning



We'll help you Accelerate2industry

As soon as you enrol on an Animal Management course, we'll start talking to you about the opportunities that could be open to you in the future. To guide you through the process and help you achieve your aspirational career goals, we've teamed up with our higher education partner, UCEN Manchester, on an exciting initiative.



Ultimately, the aim of Accelerate2Industry is to help you progress into either higher study, higher education with UCEN Manchester, or your chosen career.

The initiative runs throughout the academic year and there are three distinct phases:

Step 1 - Plan >>>

Find out about the options available to you at the end of your study programme.

Step 2 - Pass >>>

Your tutors will speak to you about what you're planning on doing next year and support you to secure the grades you need to move on to the next phase of your journey.

Step 3 - Progress >>>

Your tutors will ensure that you have all of the information and support you need to re-join us in September or progress on to university, employment or an apprenticeship.

Progressors Award >>>

Do you want to study with a higher education provider that offers something a little bit different and delivers courses that are career focussed and lead you straight into employment? If so, our Progressors Award is just for you.

The award is open to all Level 3 students at The Manchester College that, upon completion of their course, enrol onto a higher education course at UCEN Manchester. The Progressors Award is currently £200. Please check the amount, eligibility, and terms and conditions ahead of making your progressors application to UCEN Manchester during your final year of Level 3 study.

Book a campus tour, taster session or other support session with the UCEN Manchester Outreach Team by contacting HEfutures@ucenmanchester.ac.uk.

Scan for more information, advice and guidance.



How to apply

Applying to study at The Manchester College is really easy. Just follow these steps and you will be on your journey to amazing in no time.



Step 1

Visit **tmc.ac.uk**



Step 2

Choose a course, apply at an open event, online or mobile



Step 3

Receive a conditional offer - you must accept this within 12 weeks



Step 4

Book to attend an interview



Step 5

Register to attend our New Student Welcome Day on 30 June (16-18 only)



Step 6

We will invite you to enrol in August or September after you receive your results (if applicable)

What's next?

Find out more and apply

To find out more about Animal Management at The Manchester College and to apply, scan the QR code or visit: **tmc.ac.uk/animal-management**



Visit us

Join us at one of our open events throughout the year to learn more about our courses, tour our facilities, speak to our tutors and much more. To find out when our next open event is taking place and to register your place visit: **tmc.ac.uk/events**

Stay in touch

Follow us on our social media channels:

 **The Manchester College**

 **@TheMcrCollege**

 **@TheMcrCollege**

 **@themcrcollege**

Contact Us

Got a question about one of our courses, about The Manchester College or just need to get in touch? Contact us:

 **enquiries@tmc.ac.uk**

 **03333 222 444**



The Manchester College is committed to equality of opportunity, non-discriminatory practices and supporting individual learners. This information is also available in a range of formats, such as large print, on request.