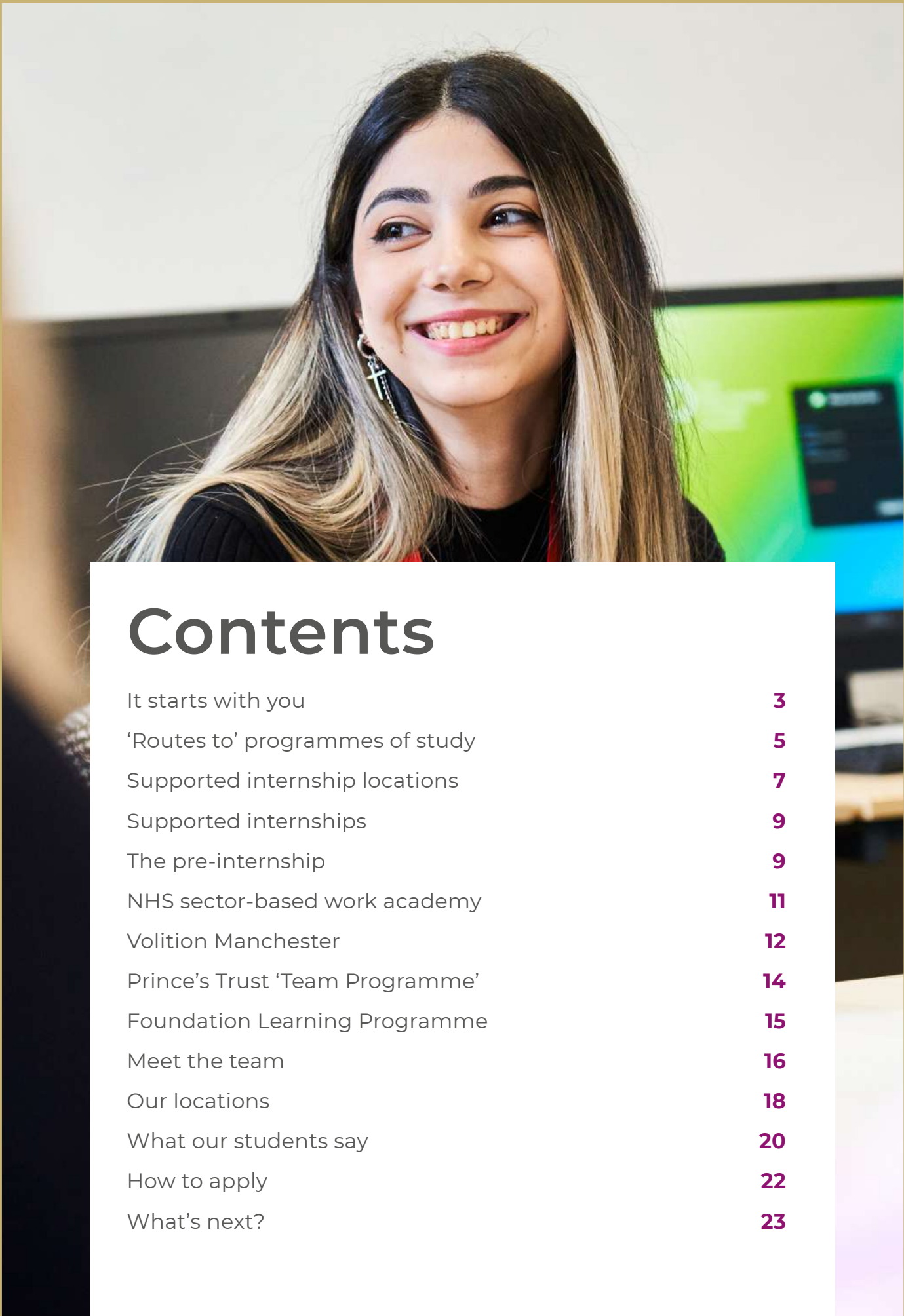




FOUNDATION

LEARNING





Contents

It starts with you	3
‘Routes to’ programmes of study	5
Supported internship locations	7
Supported internships	9
The pre-internship	9
NHS sector-based work academy	11
Volition Manchester	12
Prince’s Trust ‘Team Programme’	14
Foundation Learning Programme	15
Meet the team	16
Our locations	18
What our students say	20
How to apply	22
What’s next?	23

It starts with you

At The Manchester College we work in partnership with over 12 local authorities in Greater Manchester and the North West to provide a highly personalised learning offer.

Whatever your background or ability our Foundation Learning courses are designed to help you get back into learning and develop the skills you need.

Our dedicated courses are designed to support you by removing any barriers to learning and employment. Students will develop the essential skills and gain the experience they need to progress.

Whether it’s to progress to further study with us, develop new skills and gain employment or to achieve a dream career - we’re on hand to help our students get there.

Read on to find out what support we can offer.





'Routes to' programmes of study

Our 'Routes to' courses can be customised to meet the requirements of individual students, helping them to develop a range of skills associated with community living, employment and education.

Routes to Learning

Specifically designed for students with Special Educational Needs and Disabilities (SEND) who can follow instructions and routines, and who would like to develop their own independence and work skills.

Routes to Skills and Employability

Designed for any student under the age of 24 with an EHCP (or in the process of gaining one), this course will help those with the potential to develop their work skills, make positive decisions about their next steps, and focus their goals on employment or progressing onto another course at the College.

Routes to Industry

This is our 'high impact' programme of study, where students identified with potential can be supported to achieve accelerated progression onto the mainstream curriculum.

Once identified, students will work with both their 'Routes to' teacher and a specialist teacher to find opportunities to integrate into the mainstream vocational route of their ambitions during the current academic year.





Supported internship locations

Manchester University NHS Foundation Trust

With a base at both Oxford Road and Wythenshawe Hospital, interns will be able to access many different types of work placements in and around the hospital including roles in housekeeping, catering, portering, administration and much more.

Manchester City Council

On our Manchester City Council placement, students are based in the city centre, where they can try many different types of job roles, both within the council and other employers including hotels, shops, offices and restaurants.

Manchester Airport

With our Manchester Airport Supported Internship, students work within the busy airport environment in a range of customer-focused work placements. This can be in practical roles such as cleaning or as a trolley porter, or in restaurants, shops and customer service.

MediaCityUK, Salford Quays

With a base at the vibrant MediaCityUK, we have access to many different types of employers and work placements in and around the area. This includes both large and independent businesses such as breweries, shops, hotels, restaurants, grounds maintenance and many others.



Supported internships



Our Supported Internships are aimed specifically at students with Education, Health and Care Plans up to the age of 24.

The internships support students through barriers to employment and are tailored to specific skills and support needs.

On our Supported Internship programmes, students have access to training in a real workplace. Host employers include Manchester University NHS Foundation Trust, Manchester Airport Group and Manchester City Council, as well as a wide range of different businesses in and around Manchester and at MediaCityUK in Salford Quays.

Interns are supported to develop real work skills in placements that are closely matched to their interests and aspirations. Alongside their work placements, they will continue to progress their functional skills in English and maths as well as appropriately targeted vocational qualifications such as food hygiene and health and safety.

They're supported to learn the job with help from an employment officer, job coach and teacher throughout the duration of the placement and, in the majority of cases, go on to secure meaningful employment.

The pre-internship

For students who are not yet ready for one of our internships and employment, we also offer a Preparation for Supported Internship course.

This gives students the opportunity to develop skills via a mix of classroom activities, community visits, work tasters and work placements, ahead of future employment and taking the next step onto one of our Supported Internship programmes.



NHS sector-based work academy



The NHS is one of the largest employers in the world and the Manchester Foundation Trust (MFT) is actively looking to employ local people in roles such as Nursing Assistants, Administration and Medical Laboratory Assistants. This course is perfect for those who believe they are compassionate, caring, committed and have the courage to succeed.

The skills you will develop while studying this qualification will improve your confidence, communication, teamwork, initiative, resilience and time management. They are designed to ensure the content matches what is needed and valued by the NHS.

As well as learning new skills and meeting new people we will support and help you get ready for your placement and to apply for the available jobs to progress in your chosen field.

If you're currently not in employment and have aspirations to work in the NHS then our five-week skills programme followed by a five-week work experience placement in a busy hospital, might be the course for you.

The programme aims to build your CV and interview skills, boost your confidence and prepare you for employment with the NHS.

Delivered in the classroom, you'll have the chance to:

- Learn about safeguarding and E-safety
- Work in a person-centred way
- Value equality and diversity
- Demonstrate effective communication
- Introduction to working in Health Care settings
- Develop the interpersonal and organisations skills employers want
- Ensure your confidence is sky-high when you take your next step.

Cathedral Volunteering Programme

Employers highly value candidates with well-developed employability skills. Employability Skills qualifications focus on developing areas such as confidence, communication, teamwork, initiative, resilience and time management. They are designed so that the content matches what is needed and valued by today's employment market.

Volition is ideal if you want to learn new skills to support you to achieve your employment aspirations.

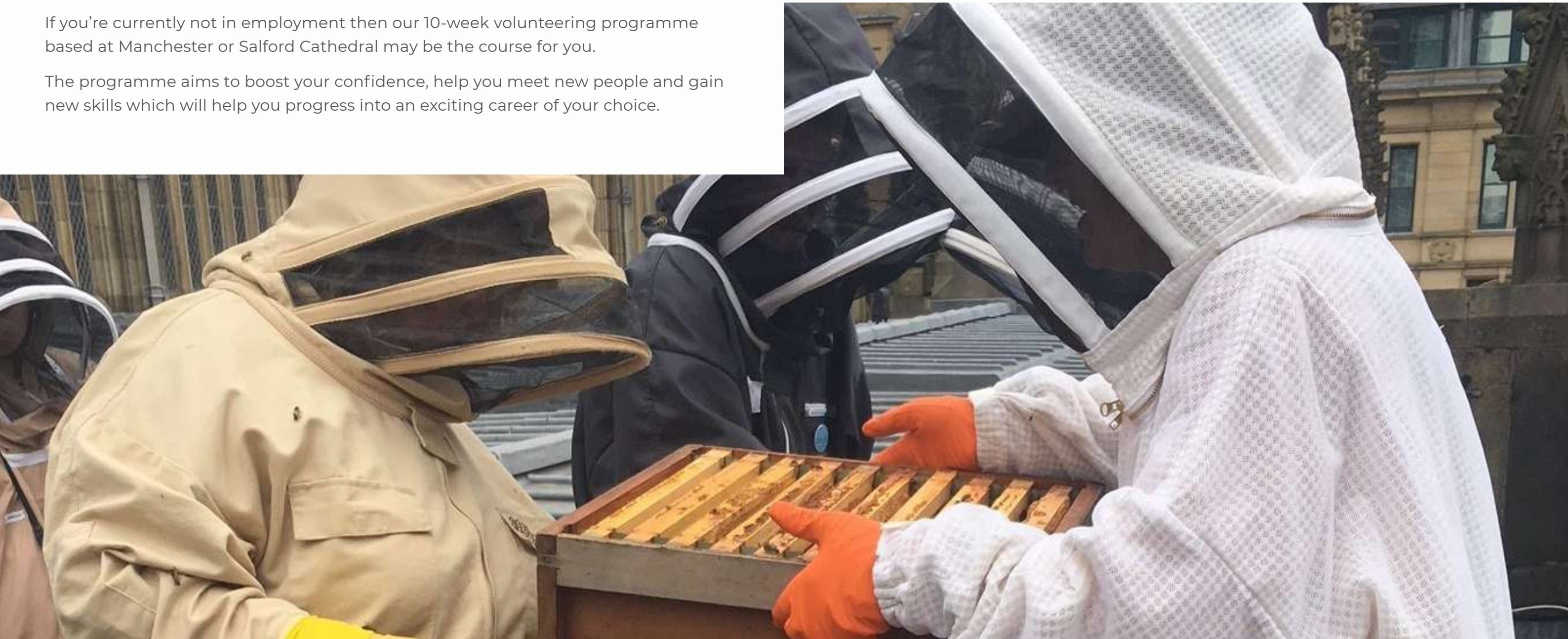
We will support and help you to apply for jobs, progress in your chosen field, prepare for further study and develop the skills and techniques you will need to succeed.

If you're currently not in employment then our 10-week volunteering programme based at Manchester or Salford Cathedral may be the course for you.

The programme aims to boost your confidence, help you meet new people and gain new skills which will help you progress into an exciting career of your choice.

Delivered in the classroom and out volunteering at the Cathedral or with one of our partner organisations, you'll have the chance to:

- Gain valuable work experience in something you're interested in
- Develop your English and maths skills
- Develop your interview and CV skills
- Develop the interpersonal and organisations skills employers want
- Ensure your confidence is sky-high when you take the next step.



Prince's Trust 'Team Programme'

IN PARTNERSHIP WITH
THE PRINCE'S TRUST

If you're aged between 16 and 25 and you're not in education or employment then our 12-week Prince's Trust programme is for you.

The programme aims to boost your confidence, help you meet new friends and gain new skills which will help you progress onto further study or straight into an exciting career of your choice.

Delivered in the classroom, on residential and out in the local community, you'll have the chance to:

- Take on your own group community project, making a positive difference to the place where you live
- Take part in an action packed residential trip
- Get two weeks' work experience in something you're interested in
- Develop your English and maths skills
- As part of the course, we also spend some time developing your interview and CV skills to ensure your confidence is sky-high when you take the next step.



Foundation Learning Programme

Our Foundation Learning programme is designed to support young people who are not yet ready for, or who have experienced difficulties with, their education as they transition onto a vocational college course or work-based learning.

You will develop the skills and confidence to thrive in a more independent environment. We understand that starting college can be a challenging experience for many young people and our programme offers additional time to help you adjust and feel comfortable with your new setting and upcoming challenges.

The programme is a structured study plan that includes core GCSEs, Functional Skills, and a Certificate in Personal and Social Skills. You can choose from two pathways:

- Level 1 Construction Pathway - incorporating project-based learning within our construction department
- Level 1 Vocational Pathway - offers an exploration of various vocational courses within the College.

These pathways, combined with significant personal development opportunities, prepare you for your next steps, whether it's a Level 1 vocational course with dedicated 1:1 support from a learning coach or an individualised career pathway plan. You will have a tailored study programme and support level to meet your specific needs.



Meet the team

Our highly qualified, specialist staff are able to provide support for students during your time at The Manchester College.



Andrew Pickles, Assistant Principal

Andrew has worked in education since 2001 and has spent over 10 years in Local Government, becoming a Senior Leader in Children’s Services, before returning to further education and joining the college in 2021 as Assistant Principal.

Andrew is passionate that all students should achieve their full potential and believes that staff are in a unique and fortunate position being part of a students’ journey. He is an advocate for student achievement and is committed to providing an ambitious and aspirational experience that leads to a sustained career.



Michelle Rigg, Director of Foundation Learning

Michelle has worked in youth work and education for over 30 years and at The Manchester College for the last 22. She became Director of the Foundation Learning and Student Support in 2022 after more than 15 years as a Curriculum Lead.

Michelle has served on Boards for The Manchester Settlement, Newton Heath Community Learning Centre and The Manchester Secondary PRU (Pupil Referral Unit).

She passionately believes that all young people have the right to benefit from a consistently high level of education and support.

Scan here
to read more
about our tutors



Lucy Knowles, Head of Department

With fifteen years of experience in both further and higher education, Lucy has worked across a range of educational institutions. She began her career teaching A-levels but quickly developed a passion for enhancing teaching and learning.

This led her to a role as Programme Leader for Initial Teacher Education before transitioning into the field of Quality. Now serving as Head of Quality for Foundation Learning, Lucy is dedicated to fostering teachers’ epistemic agency to ensure students consistently benefit from exceptional learning experiences.



Ben Metcalfe, Head of Department

With a strong background in education, curriculum development, and leadership, Ben has dedicated his career to supporting learners from disadvantaged backgrounds and those with SEND, helping them raise their aspirations and reach their full potential.

Ben has worked to ensure that learners are well-informed about both local and national job markets, while also equipping them with the employability and interpersonal skills vital for success in the workplace.



Daniel Kirkham, Head of Department

Daniel has worked within The Manchester College SEND departments for over 17 years and is currently the Head of Department for the Routes and Pre-Internship programmes.

He started his career as a teacher for our Skills for Working Life courses delivering independence and work readiness skills to SEND Students, eventually progressing after 10 years to his current role.

Daniel is passionate about helping SEND students to reach their full potential and feel prepared for adulthood.

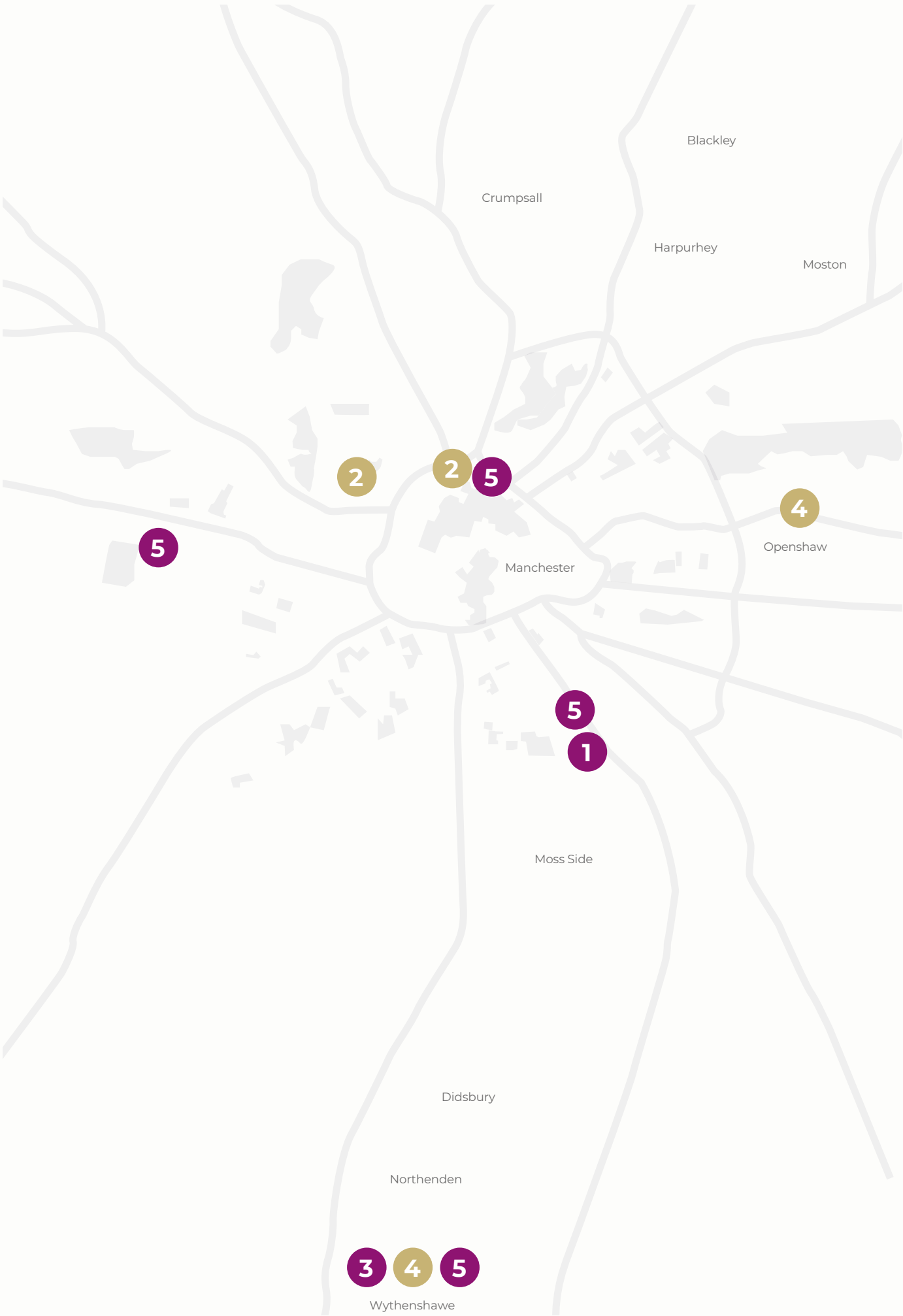
Our locations

Our Foundation Learning courses are available at a number of our campuses across Greater Manchester and externally at employer locations.

Wherever you study, you'll learn in classrooms that reflect a strong focus on employability and developing independence and skills.

Plus, if you're on one our Prince's Trust programmes you'll be making use of some outstanding outdoor education facilities on a week-long residential.

- 1 NHS Sector Based Work Academy – **Citylabs**
- 2 Volition Manchester Cathedral Volunteering Programme – **Manchester and Salford Cathedral**
- 3 Prince's Trust 'Team Programme' 16-18 and 19+ – **Wythenshawe Campus / Harpurhey Campus / external buildings**
- 4 Foundation Learning Programme and 'Routes to'– **Openshaw Campus and Wythenshawe Campus**
- 5 Supported Internships - **MediaCityUK, NHS MFT Oxford Road, NHS MFT Wythenshawe, Manchester Airport and Manchester City Council**





What our students say

I really enjoyed the course, my teacher was lovely and friendly. I learned to be more confident in interview skills, applying for jobs online and sending my CV. I enjoyed working with others on the course, it was like a family.

Zara, Preparation for Employment

To anyone wanting to do this course I would say that you have to go for it. I now feel much more independent and I have enjoyed feeling like I belong somewhere, which has previously not occurred from my experience.

Joseph, Supported Internship

One of the things that I have enjoyed is going out into placement and seeing what real work was like and understanding what I'll be doing when I get a job. Reflecting on what I have been doing is great as I see the improvements I have made and see how I get better each week.

Connor, Supported Internship

The Supported Internship has allowed my son to feel empowered to become more independent. He now has aspirations of working in job roles he previously would not have considered. The staff on the internship are supportive and kind, whilst still setting high expectations for students.

Parent of Supported Internship student



How to apply

Applying to study at The Manchester College is really easy. Just follow these steps and you will be on your journey to amazing in no time.



Step 1

Visit **tmc.ac.uk**



Step 2

Choose a course, apply at an open event, online or mobile



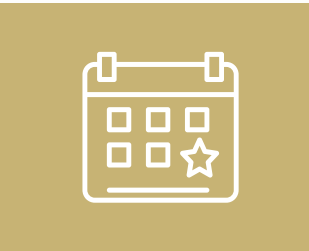
Step 3

Receive a conditional offer - you must accept this within 12 weeks



Step 4

Book to attend an interview



Step 5

We will invite you to enrol in August or September after you receive your results (if applicable)

What's next?

Find out more and apply

To find out more about Foundation Learning at The Manchester College and to apply scan the QR code or visit: **tmc.ac.uk/foundation-learning**



Visit us

Join us at one of our open events throughout the year to learn more about our courses, tour our facilities, speak to our tutors and much more. To find out when our next open event is taking place and to register your place visit: **tmc.ac.uk/events**

Stay in touch

Follow us on our social media channels:

 **The Manchester College**

 **@TheMcrCollege**

 **@TheMcrCollege**

 **@themcrcollege**

Contact Us

Got a question about one of our courses, about The Manchester College or just need to get in touch? Contact us:

 **enquiries@tmc.ac.uk**

 **03333 222 444**



The Manchester College is committed to equality of opportunity, non-discriminatory practices and supporting individual learners. This information is also available in a range of formats, such as large print, on request.