

# EDUCATION AND EARLY YEARS





# Contents

It starts with you	3
Careers information	4
What our students say	6
Meet the team	8
Our locations	10
Get career ready with us	12
T Levels	14
Courses	18
Courses for Adults	21
Supported learning	22
Accelerate2industry	24
UCEN Manchester higher education	26
How to apply	28
What's next?	31

## It starts with you

**There are few things more rewarding than watching a child blossom because of your actions. Whether you're helping them to take their very first steps, watching them master their ABCs, or supporting them to tackle their fears, every development is a sign of a job well done.**

You'll have a lot of responsibility and you may find yourself with aching feet and hair full of glitter by the end of the day, but if you want job satisfaction, a career in education and early years could be just what you're looking for.

To succeed, you'll need to be compassionate, patient and nurturing. You'll also need to genuinely enjoy working with children and encouraging them to try new things. The other skills and knowledge you'll need, we can teach you. You'll learn how to recognise what each individual child requires to thrive and how to keep children safe, healthy and happy.

Our teachers have extensive experience, both out in the sector and of teaching students. They also have valuable links to employers, so they can help you to gain a greater insight into different careers and decide which path is right for you.

The best way to learn is to practise, so you'll gain vital practical experience, whether it's in a private childcare facility, early years provision or in a primary school.

In short, The Manchester College can help you to strengthen your innate talents and abilities, leaving you ready to embark on a successful, fulfilling career.







# Careers information



## JOBS FIGURES

There were approx. **15,006** employees in the Education and Early Years sector in Greater Manchester in 2021, this is predicted to increase by 2.3% by 2025.



## AVERAGE EARNINGS

Average wage in GM is **£24,580 per annum (2021)**.



## REPLACEMENT DEMAND

**11.5%** of the current workforce will be reaching retirement age in the next 10 years, meaning those positions will need filling.



## WORKFORCE SPLIT

Currently **91.2%** of the workforce are female.

Types of jobs available	Skills needed	Examples of GM employers
Child Protection Officer	Communication	Bright Horizons Family Solutions
Early Years Teacher	Empathy	Busy Bees Childcare
Educational Support Assistant	Enthusiasm	Heaton Park View
Nanny / Childminder	Lesson Planning	Kids Planet
Nursery Manager	Literacy	Little Ways Day Nursery
Nursery Worker	Mental Health Awareness	Local councils
Playworker	Numeracy	Puddle Ducks
Special Educational Needs (SEN) Teacher	Patience	Sure Start children's centres
Special Educational Needs (SEN) Teaching Assistant	Resilience	Tinies Childcare
Teaching Assistant	SEND Awareness	Tiny Turtles Day Nursery

Data sourced from Lightcast March 2023.

**FIND OUT  
MORE HERE**







## What our students say

I enjoy the fact that we get to do a placement because it gives you experience to make sure that you know you're going on the right path. I've learnt to be more organised, especially with my assignments and getting them done on time.

I've learnt planning skills because I have to sit down and plan activities that meet the children's needs. I do my placement at Moston Fields Primary School and I like doing it there because all the staff are lovely and the children love to help me do my activities. I made gloop with them the other week and they just love getting messy!

After I finish, I'm going to go into an apprenticeship to do my Level 3 in Childcare and do my SLT (Speech and Language Therapy).

Lucy Foster  
Level 2 Early Years Practitioner



I chose to study a T Level because of the placement opportunities that are offered as I got to experience the actual work environment. On placement I liked how I was able to form attachments with the children at my placement and how I got to see them progress over the year.

We study several things such as the national curriculum and how it is implemented within a setting. As well as this, we highly focus on safeguarding as that is a vital part of the job.

Once I've completed my T Level I plan on going to university where I'll be doing a degree in Primary Education.

The advice I would give to anyone thinking of studying a T Level is to really take it on because it offers placement opportunities that will really help your theory work.

Hina Idrees  
T Level in Education and Early Years (Assisting Teaching)

# Meet the team



Our welcoming and supportive tutors are passionate about teaching the next generation of early years practitioners and teachers.

Each member of the department has a wealth of knowledge and experience in the sector and they're keen to guide you to a successful career.



**Julian Smith**  
**Assistant Principal**

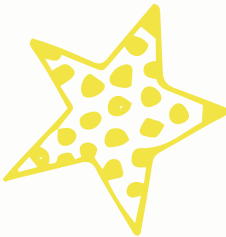
Julian oversees our Animal Management, Education and Early Years, Health and Social Care, Public Services, Science, Sport, Public Services courses.

With 17 years of experience in further and higher education institutions, including 15 years in managerial and senior leadership roles, Julian brings a wealth of expertise to the position.



**Emma Rutter**  
**Head of Department**

Emma joined the College as a nursery officer in our on-site nurseries back in 1999. She then moved to the teaching side in 2004 and progressed into the management team in 2013. Emma also has a lot of experience working with charities. Her previous experience includes being a safeguarding co-ordinator for a charitable organisation and she has also been a lead volunteer for a youth organisation for 27 years.



**Angela Mahon**  
**Department Team Leader**

Angela joined the College in 2014 as a tutor and first aid trainer for the Education and Early Years department and then became the Department Team Leader. Angela has a wealth of experience in early years settings across England, as both a practitioner and a manager.



**Nicola Dillon**  
**Course Leader**

Nicola started at the College in 2018. She has more than 20 years' experience working in a range of different early years settings, educational establishments and out in local communities. Prior to becoming a tutor, Nicola was a children's centre district lead, which saw her managing a number of centres, and working with families and children under five years old.



**Gillian Taylor**  
**Course Leader**

Gillian joined the college in 1997 as a tutor and assessor. Prior to becoming a tutor, she has many years experience working in a range of different settings as a teaching assistant, early years practitioner and as an assistant manager.



**Scan here**  
to read more  
about our tutors



# Our locations

Our Education and Early Years courses are offered at campuses across Manchester all of which are well served by public transport. So, wherever you live, you're not far from starting your journey towards a career working with children and young people.

Our Level 1 courses for 16 to 18-year-old students are taught at our Wythenshawe, Harpurhey and Openshaw campuses, while our adult students will study at either our Harpurhey Campus or Wythenshawe Campus.

We also offer Level 2 and T Level courses at our Openshaw Campus for 16-18 students, who will benefit from using the amazing new facilities on offer at this site. These include a fully-equipped mock-nursery and early years setting, with a sensory space and kitchen.

Working with children can be challenging but also incredibly rewarding. In our industry standard facilities you'll learn the skills you need to meet every child's needs and have a successful career working with young people.



- 1 Harpurhey Campus**  
Rochdale Road, Harpurhey, Manchester, M9 4AF
- 2 Openshaw Campus**  
Ashton Old Road, Openshaw, Manchester, M11 2WH
- 3 Wythenshawe Campus**  
Brownley Rd, Wythenshawe, Manchester, M22 9UH

# Get career ready with us

**We passionately believe in helping you reach your ultimate goal, focusing on your future employability and developing the knowledge, skills and behaviours you will need to have a successful career.**

Many of our programmes of study have been co-developed with industry partners. Working so closely with industry partners means you'll benefit from courses that are aligned with current industry skills and demands as well as a range of industry-level activities and lessons.

Once you complete your journey with us you will have the qualifications you need to take the next steps towards an amazing career, as well as the knowledge, skills and behaviours that will help you stand out to future employers.

## Study Programmes

We offer qualifications from Level 1 to Level 3, including T Levels.

If you haven't already obtained a Grade 4 GCSE in English or maths, you'll study to work towards achieving this qualification. This is a mandatory requirement and it's also essential you achieve this for many careers.

## Employability

To prepare you for your future career, you'll take part in a range of 'employability' activities to equip you with the knowledge and experience of the careers available to you.

You'll be assigned an Employability Co-ordinator and will take part in a wide range of activities that will help you develop the knowledge, skills and behaviours you'll need to thrive in the workplace.

## Industry Expertise

You will get the opportunity to take part in masterclasses and lessons delivered by industry experts, visits from guest speakers within the sector and industry-standard projects, that will see you working on the kind of tasks you'd be completing once you begin your career in the education and early years sector.

## Work Experience or Industry Placement

As part of your course you are required to take on external work experience. We will help you find a suitable placement. While there, you'll help with day-to-day tasks and shadow staff to develop the knowledge, skills and behaviours that are expected in the workplace and broaden your knowledge of the industry.

Previous students have worked with:

- Bizzie Kidz Private Day Nursery
- Buttercup Corner Day Nursery
- Mulberry House Day Nursery
- Tiddlywinks Nursery Group

You may be able to apply for an industry placement offering a longer period of experience with a leading employer, depending on your course.

An industry placement gives you in-depth knowledge of the industry, allows you to gain hands-on experience and gives you an insight into career pathways.

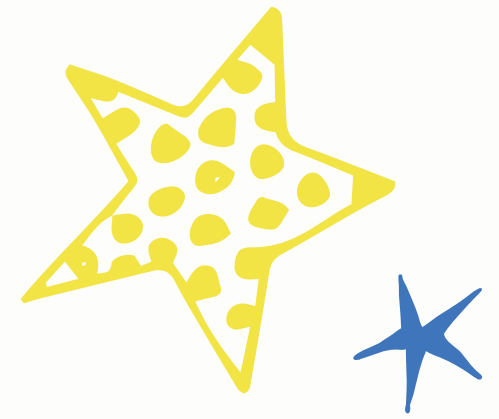
With a placement, you're taking that all important first step onto the ladder; many of our students even go on to gain paid employment with their industry placement employer at the end of the year.

## Work Related Activity

There are so many careers in the education and early years sector and we want to help you explore as many as possible during your studies.

We organise lots of work-related activities to help you discover more about the opportunities that might be open to you. You could soon be taking part in activities such as:

- Visits and Q&As with employers in education and early years
- Careers events to learn directly from industry experts about opportunities working with children and young people
- Trips to education and early years setting to learn what it's like to work in the sector.





## Study for a Technical Level (T Level) qualification in Education and Early Years

**T Levels are a new two-year technical programme that provide you with a high-quality alternative to A Levels.**

They have been developed in collaboration with employers, and combine theory, practical and classroom learning with a minimum 45 day industry placement. If you opt to take a T Level you will spend 20% of your time on an industry placement and 80% in the classroom.

After completing the course you can progress directly into work, on to a Higher Apprenticeship or even move on to study a university degree, as T Levels are awarded UCAS points.

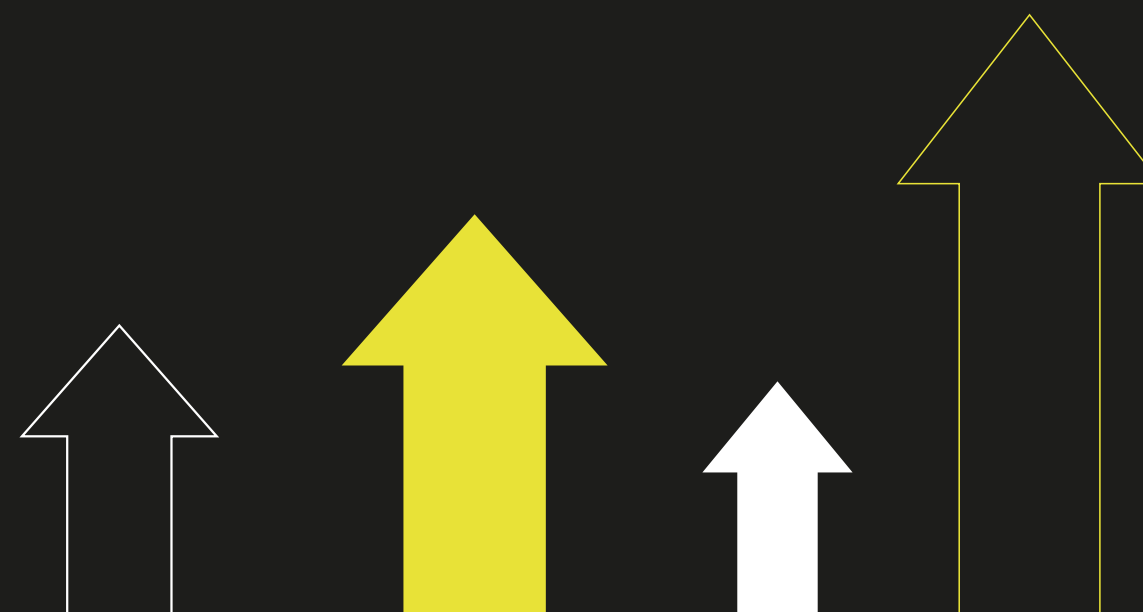


## T Award

Those successful in gaining a place on a T Level will be eligible for the 'T Award', a package of benefits that includes:

- £300 per year bursary\*
- Access to industry standard laptop\* (as appropriate)
- Opportunity to take part in exciting college-wide competitions
- Minimum 20% delivery by industry experts
- Minimum 45-day industry placement
- Free branded work wear
- Masterclasses
- Digital upskilling
- Bursary incentive if progressing to UCEN Manchester
- Guaranteed progression to a higher education course at UCEN Manchester
- Use of industry based software
- And much more.

*\*Subject to requirements including 95% attendance, positive attitude and grade profile.*





# Courses

## Level 3 | T Level | Education and Early Years (Assisting Teaching) Openshaw | Two Years

All students will develop the knowledge and skills of an education and early years professional, including supporting the teacher to enhance children’s education, individually and in groups. You’ll understand how to plan, provide and review educational opportunities in collaboration with teachers and other adults and learn about safeguarding and promoting the health, safety and wellbeing of children and young people.

You’ll gain the skills to recognise, adapt and respond to individual children’s needs, including those with SEND, to support development and access to the curriculum. Once you complete your course you will be ready for a career in roles such as Special Educational Needs (SEN) Teaching Assistant, Teaching Assistant or Teacher Learning Mentor.

## Level 3 | T Level | Education and Early Years (Early Years Educator) Openshaw | Two Years

All students will develop the knowledge and skills of an education and early years professional, including supporting and promoting children’s play, development and early education and developing relationships with children to facilitate their development.

You’ll understand how to plan, provide and review care, play and educational opportunities to enable children to progress and learn about safeguarding and promoting the health, safety and wellbeing of children.

Communication is key as you will be working in partnership with colleagues, parents, carers and other professionals to support children’s development. Once you complete your course you will be ready for a career in roles such as Nursery Practitioner, Special Educational Needs and Disabilities Co-ordinator (SENDCO), Team Leader or Room Leader.

For those who don’t meet the entry requirements and would still like to pursue a T Level, there is the option of a one-year Level 2 T Level Foundation Year.

This Foundation Year will allow you to gain a qualification and move on to study one of our T Levels in Education and Early Years the following year.

## Level 2 | T Level Foundation Year | Education and Early Years (Working in Early Years and Primary Settings) Openshaw | One Year

Are you passionate about working with children? This course has been developed in collaboration with employers so that the content meets the needs of industry and prepares you for the Level 3 qualification.

You will learn the essential skills and knowledge of the early years and education sector including child development, play and learning, exploring legislation, the role of the childcare practitioner, nutrition and physical development and physical activity.

# Jump Start To T Levels

Both our T Levels and T Level Foundation Year require you to complete our Jump Start to T Levels programme as an entry requirement.

This programme is a two-week introduction to our T Level and T Level Foundation Year programmes, where you can meet your tutors and experience what studying a T Level at The Manchester College is like.

To apply or find out more about our T Levels and T Level Foundation Year programmes, visit our Industry Excellence Academy website:  
[industry-excellence.tmc.ac.uk/t-levels](https://industry-excellence.tmc.ac.uk/t-levels)



# Courses

If you have the passion, we can help you to gain the skills you need for a successful career working with children and young people.

## Level 1 | Caring for Children

### Openshaw / Harpurhey / Wythenshawe | One Year

Our Level 1 Diploma is an ideal introduction to Education and Early Years if you want to explore the skills needed to care for young people. It'll help you to build the foundations for further study and a rewarding career in childcare.

The tutors will share their experiences and research on how children grow and develop. You'll discuss how to respect and value children's feelings and tackle challenging behaviour.

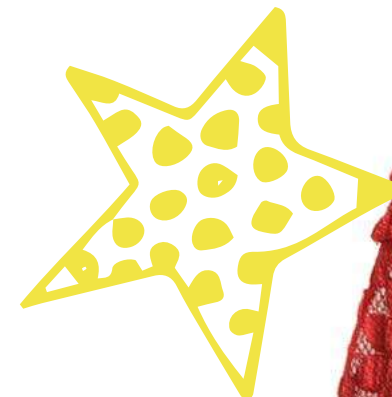
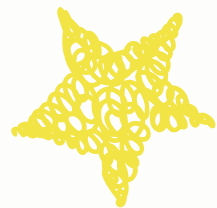
You'll also gain a greater understanding of how to use play-based activities and crafts to support early learning and how to encourage children to enjoy healthier lives. This course also covers many of the practical health and safety aspects you'll need to be aware of when you work with children.

## Level 2 | Early Years Practitioner

### Openshaw | One Year

This course will prepare you for the roles and responsibilities associated with being an Early Years Practitioner so they can ensure the safeguarding, protection and wellbeing of the babies and young children that they are looking after.

As part of this qualification you will gain knowledge and understanding of various aspects of childcare that you can apply in the workplace such as preparing children for a school environment, supporting children with special educational needs or disabilities and encouraging children's development through purposeful play and educational activities.





# Courses for Adults

If you're over 19, we offer a wide range of courses starting throughout the year at our Harpurhey and Wythenshawe campuses. These can help you to upskill and strengthen your CV, whether you want to start a new career or progress in your current role.

At The Manchester College we believe that finances shouldn't be a barrier to your success, so if you have any questions about course fees, finance or funding then please contact [careers&welfare@tmc.ac.uk](mailto:careers&welfare@tmc.ac.uk) or you can find out more about the support available by listening to our podcasts on funding at [tmc.ac.uk/podcast](https://tmc.ac.uk/podcast) or by visiting [tmc.ac.uk/study-with-us/fees-finance-funding/19](https://tmc.ac.uk/study-with-us/fees-finance-funding/19)

Caring for Children | Level 1

Early Years Practitioner | Level 2

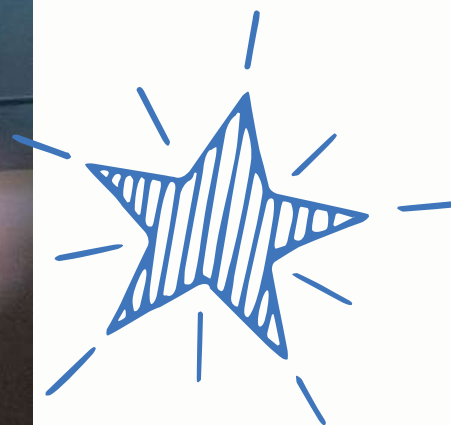
Supporting Teaching and Learning | Level 2

Supporting Teaching and Learning | Level 3

For more information or to apply visit [tmc.ac.uk/education](https://tmc.ac.uk/education)

ADULT

COURSES





# SUPPORTED LEARNING

Promoting independence  
through accessibility and  
inclusion

Have you received learning support in the past? Do you have an Education, Health and Care Plan or an identified Special Educational Needs or Disabilities (SEND) need? Our Supported Learning team can help students with SEND to achieve their aspirational career goals.

We provide a highly personalised offer for students to create a supportive learning environment for all. Whatever course you choose to study, our provision is specifically designed to support you on your journey to independence and into further education or employment.

Find out more about how we can help you:  
[tmc.ac.uk/supported-learning](https://tmc.ac.uk/supported-learning)





# We'll help you Accelerate2industry

As soon as you enrol on a Education and Early Years course, we'll start talking to you about the opportunities that could be open to you in the future.

To guide you through the process and help you achieve your aspirational career goals, we've teamed up with our higher education partner, UCEN Manchester, on an exciting initiative.



Ultimately, the aim of Accelerate2Industry is to help you progress into either higher study, higher education with UCEN Manchester, or your chosen career.

The initiative runs throughout the academic year and there are three distinct phases:

## Step 1 - Plan >>>

Find out about the options available to you at the end of your study programme.

## Step 2 - Pass >>>

Your tutors will speak to you about what you're planning on doing next year and support you to secure the grades you need to move on to the next phase of your journey.

## Step 3 - Progress >>>

Your tutors will ensure that you have all of the information and support you need to re-join us in September or progress on to university, employment or an apprenticeship.

## Progressors Award >>>

Do you want to study with a higher education provider that offers something a little bit different and delivers courses that are career focussed and lead you straight into employment? If so, our Progressors Award is just for you.

The award is open to all Level 3 students at The Manchester College that, upon completion of their course, enrol onto a higher education course at UCEN Manchester. The Progressors Award is currently £200. Please check the amount, eligibility, and terms and conditions ahead of making your progressors application to UCEN Manchester during your final year of Level 3 study.

Book a campus tour, taster session or other support session with the UCEN Manchester Outreach Team by contacting [HEfutures@ucenmanchester.ac.uk](mailto:HEfutures@ucenmanchester.ac.uk).

Scan for more information, advice and guidance.





## **DEGREE LEVEL**

Once you've completed one of our Level 3 Diplomas, you may want to progress onto a degree-level qualification through our higher education partner – UCEN Manchester.

### **FOUNDATION DEGREE**

These are two-year courses, that allow you to progress onto a one-year (Top-up) degree to obtain an honours degree.

- **FdSc Childhood and Youth Studies**

### **TOP-UP DEGREE**

This is a one-year course for qualified Level 5 students to gain an honours degree.

- **BSc Childhood and Youth Studies**

For more information or to apply  
visit [ucenmanchester.ac.uk](https://ucenmanchester.ac.uk)





# How to apply

Applying to study at The Manchester College is really easy. Just follow these steps and you will be on your journey to amazing in no time.



## Step 1

Visit **tmc.ac.uk**



## Step 2

Choose a course, apply at an open event, online or mobile



## Step 3

Receive a conditional offer - you must accept this within 12 weeks



## Step 4

Book to attend an interview



## Step 5

Register to attend our New Student Welcome Day on 30 June (16-18 only)



## Step 6

We will invite you to enrol in August or September after you receive your results (if applicable)







# What's next?

## Find out more and apply

To find out more about Education and Early Years at The Manchester College and to apply scan the QR code or visit: **[tmc.ac.uk/education](https://tmc.ac.uk/education)**



## Visit us

Join us at one of our open events throughout the year to learn more about our courses, tour our facilities, speak to our tutors and much more. To find out when our next open event is taking place and to register your place visit: **[tmc.ac.uk/events](https://tmc.ac.uk/events)**

## Stay in touch

Follow us on our social media channels:

 **The Manchester College**

 **@TheMcrCollege**

 **@TheMcrCollege**

 **@themcrcollege**

## Contact Us

Got a question about one of our courses, about The Manchester College or just need to get in touch? Contact us:

 **[enquiries@tmc.ac.uk](mailto:enquiries@tmc.ac.uk)**

 **03333 222 444**





*The Manchester College is committed to equality of opportunity, non-discriminatory practices and supporting individual learners. This information is also available in a range of formats, such as large print, on request.*