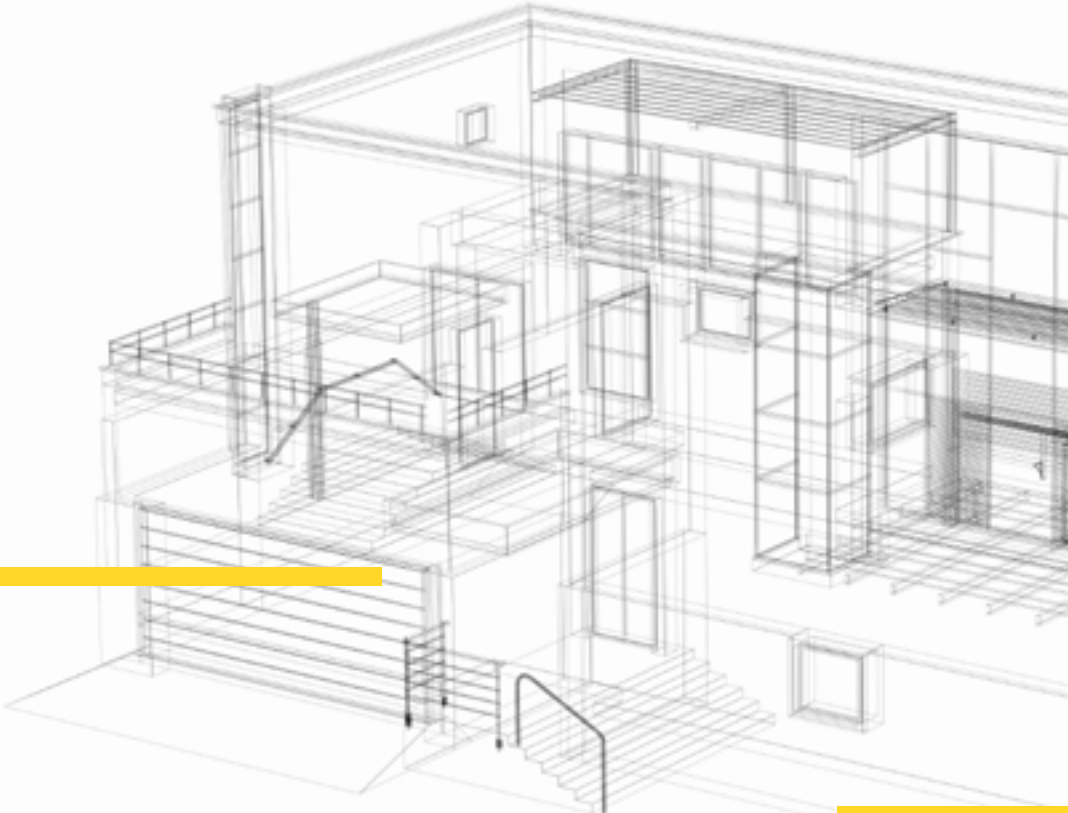




The
Manchester
College®
be amazing



CONSTRUCTION & ENGINEERING

WITH THE MANCHESTER COLLEGE

ABOUT THE COURSE

Do you want to make your mark on Manchester or even the world? With a career in construction or engineering, you'll be able to see the results of your work for years to come.

One look at the number of cranes dotted across the Manchester skyline will tell you that the construction sector is booming in this city. There's huge demand for highly skilled tradesmen, from architects to joiners and plumbers, and no better place to learn your new trade than at The Manchester College.



We'll give you access to everything you need to master the in-demand skills that employers are looking for. You'll be learning in some of the most technically advanced Construction and Engineering training centres in the North West. We deliver bespoke training in areas including Electrical and Electronic Engineering, Design, Surveying and Planning and much more. You'll be mastering your skills in realistic working environments, using industry standard equipment.

And you'll have the security of knowing that the department you'll be studying in has an excellent reputation in the industry. Our Construction and Engineering team worked with the BBC's 'DIY SOS Big Build' to create a veterans' village in East Manchester, and we're also an academic partner to the Society of Operations Engineers (SOE). Plus, The Manchester College is the only education provider in the whole of England that works directly with the fire sprinkler industry to ensure students get the exact skills that the sector needs.

If the thought of sitting at a desk for hours on end, wearing a suit and tie, makes you shudder, and you want to work alongside your mates, a career in construction could be just what you're looking for. And the first step is easy – choose your course. So what are you waiting for?



We passionately believe in helping you reach your ultimate goal, focussing on your future employability and developing the skills you need to have a successful career.

If you're aged 16-18, our Centre of Excellence for Construction and Engineering is set up to help you do just that!

EMPLOYABILITY

To prepare you for your future career, you'll take part in a range of 'employability' activities to equip you with the knowledge and experience of careers available to you:

EMPLOYABILITY SESSIONS

You'll be assigned an Employability Tutor and will take part in dedicated 'employability' sessions which will help equip you with the skills you'll need to thrive in the workplace.

WORK EXPERIENCE PLACEMENT

You'll spend at least 35 hours working in external workplaces across the region assisting with day-to-day tasks and shadowing staff to develop your skills and broaden your knowledge of the industry.

WORK RELATED ACTIVITY

You'll learn more about the industry by taking part in a wide range of activities. These might include:

- Visits from leading construction employers
- Q&A sessions with people employed in the industry
- Masterclasses
- Local and national trips to construction sites

INDUSTRY PLACEMENT

You may be able to apply for an industry placement offering more than 315 hours of experience with a leading employer.

These placements give you an in-depth knowledge of the industry, allow you to gain hands on experience and provide an insight into career pathways.

Some of our students even go on to gain paid employment with their industry placement employer at the end of the year, so they offer a great first step into the industry.

STUDY PROGRAMME

You'll join our Centre of Excellence when you enrol on any of our Construction and Engineering qualifications from Level 1 to Level 3.

If you haven't already obtained a Grade 4 GCSE in English or maths, you'll study to achieve this level of qualification alongside your course. This is a mandatory requirement and it's also essential you achieve this for many careers.



PROGRAMMES OF STUDY

There are so many career paths you can take in the construction sector. Whichever path you're thinking of taking, we can help you to get started on your journey.

CONSTRUCTION

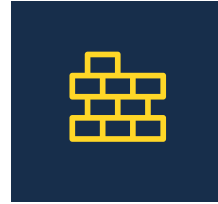
If you're not sure which trade is right for you, the following courses can help you to build skills in a wide range of areas. You'll explore bricklaying, carpentry and joinery, plastering, painting and decorating and plumbing. You'll also gain a greater understanding of what it's like to work in the industry, and learn more about how to behave in the workplace, including keeping yourself and others safe on a building site.

You can use these courses to help you decide which trade to specialise in, or as a route to setting up your own maintenance or home improvements company.

Level 1 Introduction to Construction Skills

Level 2 Construction and the Built Environment

Level 3 Construction and the Built Environment



BRICKWORK

As a bricklayer, you'd be able to see the results of your hard work for the rest of your life. Our brickwork courses will teach you everything you need to know, from the craft itself to estimating costs and working in a safe, professional manner to an accepted code of practice. You'll also be gaining valuable work experience.

Level 1 Brickwork

Level 2 Brickwork

CARPENTRY AND JOINERY

Are you considering a career as a carpenter or joiner? If you want to learn the essential skills required by the construction industry, and earn a widely-recognised qualification, then these are the courses for you.

Once you graduate, you could find yourself working on everything from staircases to timber frame buildings. So you'll need to learn a wide range of essential skills during your time with us, including how to carry out first fix flooring, roofing, frames, partitions and stairs. You'll also explore carpentry maintenance and second fixing operations, as well as learning how to set up and operate a circular saw.

Level 1 Carpentry and Joinery

Level 2 Carpentry and Joinery

Level 3 Carpentry and Joinery





ELECTRICAL INSTALLATION

Are you fascinated by how electrical systems work? If so, do you want a career building and maintaining electrical installations in machines or structures? These courses can get you started on your journey.

As you progress through the levels, you'll explore a wide range of areas within electrotechnical technology.

You'll be learning the principles of electrical science, as well as getting hands-on practical experience with electrical installations technology. You'll also discover more about what life would be like out in the workplace, and what would be expected of you, including how to keep yourself and team mates safe.

By the time you reach the Level 3 course, you'll have the basic skills and experience you need to progress into the workplace.

Level 1 Electrical Installation

Level 2 Electrical Installation

Level 3 Electrical Installation

ENGINEERING

If you're interested in a career in engineering, these courses are the perfect place to start.

On the Level 2 course, we'll be exploring the engineered world, and will cover several areas in greater detail, including mathematics for engineering, health and safety, and engineering materials. You'll also choose other units based on your own interests.

Once you've completed your Level 2 course, you'll have a solid understanding of the engineering discipline, and be ready to deepen your understanding and gain even more skills on the Level 3 course.

Level 2 Engineering

Level 3 Engineering



PAINTING AND DECORATING

As a painter and decorator, you'd be transforming homes for a living.

Our vocational qualification will give you the chance to build your skills through hands-on, practical sessions. You'll learn everything from preparing surfaces and applying paint by brush and roller, to erecting and dismantling access equipment and working platforms. You'll also explore specialist decorative finishes and a wide range of other topics.

These qualifications are widely recognised in the construction industry, so will set you on the path to a rewarding career.

Level 1 Painting and Decorating

Level 2 Painting and Decorating

Level 3 Painting and Decorating



PLASTERING

Skilled plasterers are always in demand, and these courses will give you the skills and qualifications to set yourself up in business.

As well as learning how to apply plastering materials to interiors, and fix dry linings and plasterboards, you'll explore the other key things you need to know if you're to work as a plasterer. These include keeping yourself, and others, safe.

As you progress through the courses, you'll expand your knowledge in a number of different areas, and have the opportunity to focus on either solid or fibrous plastering. By the time you finish at The Manchester College, you'll have laid the groundwork for a successful career.

Level 1 Plastering

Level 2 Plastering

Level 3 Plastering



PLUMBING

If you're thinking about a career as a plumber, The Manchester College can help you to gain the skills and qualifications you need. You'll cover all the basics of plumbing, such as hot and cold water supplies and sanitation. You'll also explore the different paths you might want to specialise in, such as domestic heating, and gain a solid working knowledge of the industry. As part of your journey with us, you'll discover what will be expected of you out in the workplace, and find out how to keep yourself, and others, safe while you're working.

Once you've achieved your Level 3 qualification, you'll be ready to get out and apply for jobs or set yourself up as a self-employed plumber.

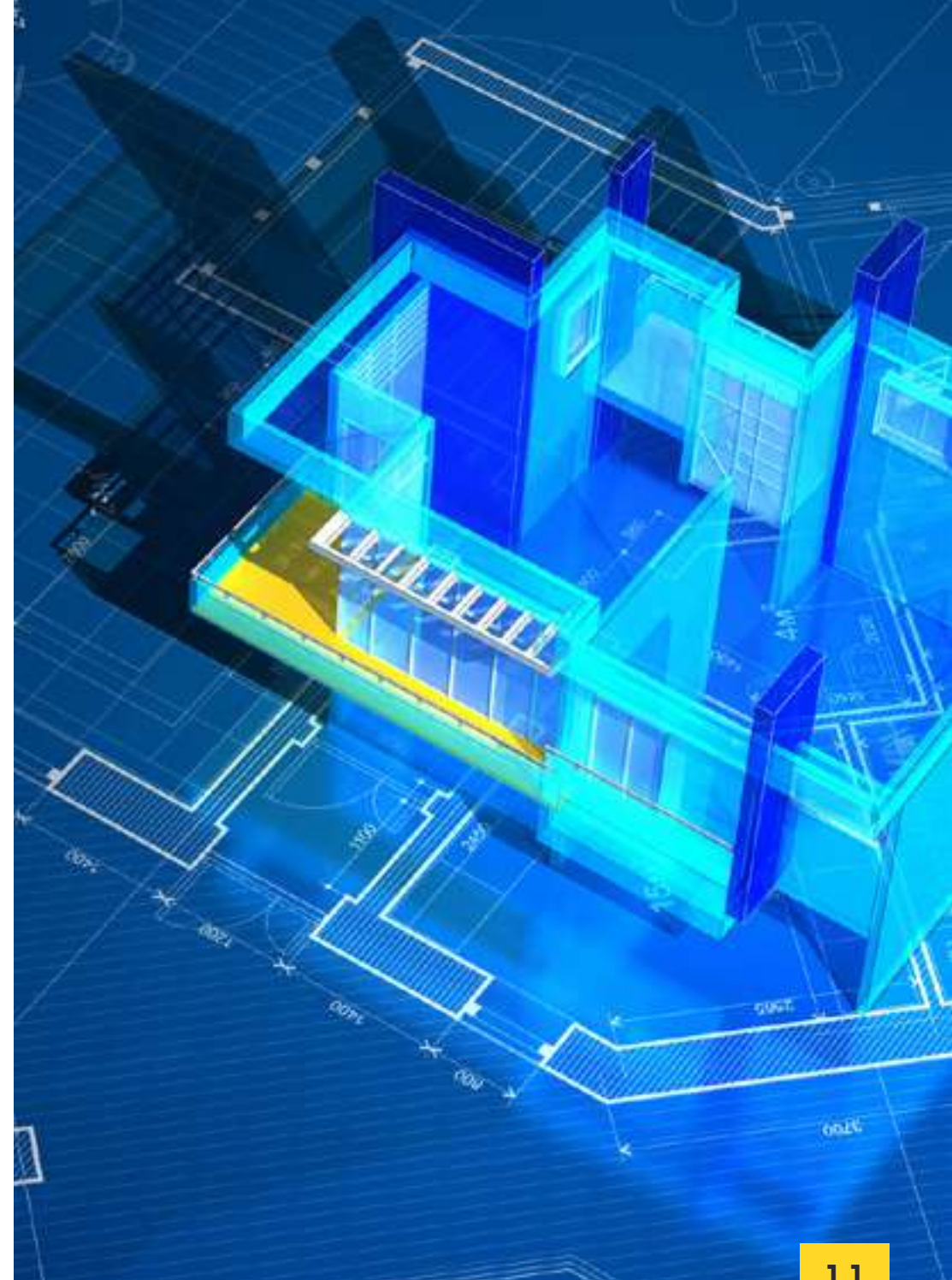
Level 1 Plumbing

Level 2 Plumbing

Level 3 Plumbing



10



11

If you've achieved the necessary entry requirements during your time in our Centre of Excellence or before joining us, you may be able to progress into our Industry Excellence Academy for Construction and Engineering.

The programme of study within this Academy has been co-developed with industry partners and will allow you to transition straight onto one of our Construction and Engineering T Level courses, which start in 2021.

Working so closely with employers means you'll benefit from courses that are aligned with current industry skills demands as well as a range of industry-level activities and lessons.

This will include masterclasses and lessons delivered by industry experts, visits from guest speakers at the forefront of the industry and 'live briefs' to industry standard that will see you working on the kind of projects you'd be completing once you begin your career in the construction industry.

In our Industry Excellence Academy for Construction and Engineering you'll complete a placement with an industry employer of at least 15 days and, in many cases, you'll receive a mentor from your chosen industry to support you along the way.

Once you complete your journey in our Industry Excellence Academy for Construction and Engineering you will have the qualifications you need to take the next steps towards an amazing career as well as the experience and skills that will help you stand out to future employers.

LEVEL 2 | DESIGN AND SURVEYING

If you have a sharp, analytical mind and want a job in a highly specialised sector, this course can kick-start your journey towards a great career.

It's a vocational qualification, so is focused on teaching you the practical skills you'll need out in the workplace. You'll be practising your new skills in realistic work environments here at the College, as well as on a real site through your work placement.

You'll also be building the crucial attributes you'll need to land your first job, such as the ability to work well in a team, plan towards a deadline and follow a set brief. Plus, you'll learn to present information clearly, follow processes and complete any necessary admin. Once you've achieved your Level 2 qualification, you'll be able to progress straight to our brand new T Level in Design and Surveying in 2021.

LEVEL 2 | ON SITE CONSTRUCTION

This Level 2 course has been designed in collaboration with our industry partners. So you'll gain the exact skills and knowledge that employers are looking for.

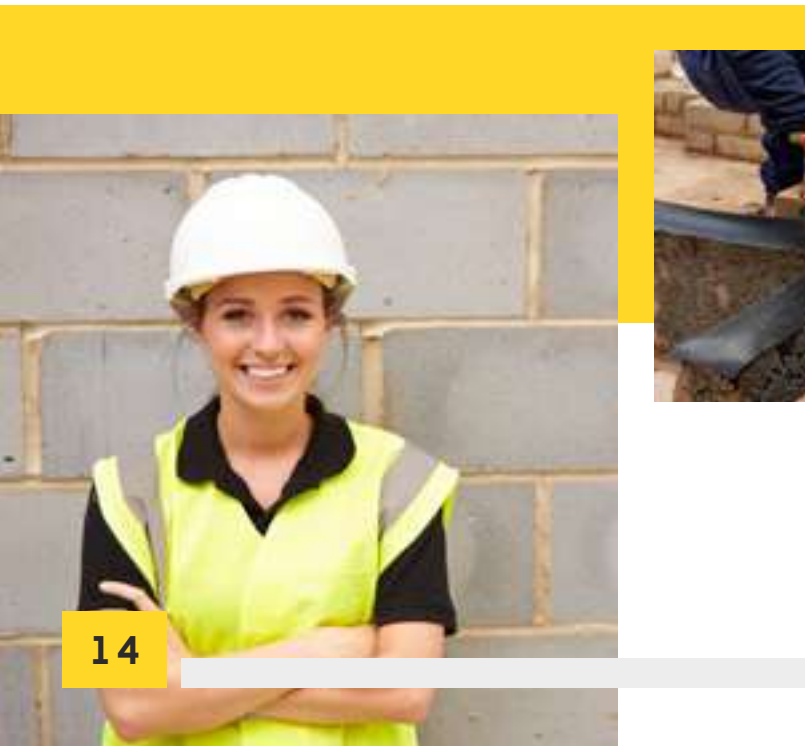
A key focus is carpentry and joinery, so you'll learn to cut, fasten, carve and design wood and other materials. You'll also learn more about how a construction site operates and discover what employers will expect from you out in the workplace.

Once you've achieved your qualification, you'll have the opportunity to continue your education, by enrolling on our brand new T Level in On Site Construction (Carpentry and Joinery). This highly technical Level 3 course is launching in September 2021, so you could be one of the first students to benefit.

LEVEL 2 | BUILDING SERVICES ENGINEERING

If you enjoy working with electrics and are looking for a career with great opportunities for progression, this course could be the one for you. You'll be learning the skills you need to apply for jobs in the electrotechnical sector or progress to further education. You'll learn about the principles of electrical science, how to install wiring systems and enclosures, and the different types of electrical installations technology that you might encounter when you're working out in the sector.

You'll be taught by skilled tutors and benefit from demonstrations and talks by local employers. As the saying goes, the best way to learn something is to do it. Most of this course is hands-on, and you'll be getting to grips with new tools and techniques from your very first week.



14

LEVEL 3 | ARCHITECTURAL, CONSTRUCTION AND ENGINEERING (ACE) SCHOLARSHIP

This two year course is designed to find and shape the talented individuals who will help to build Manchester's future. It's been designed in collaboration with our industry partners - Wilmott Dixon, Wates Construction, Conlon Construction, Kier Regional Building RW, Lovells and Vinci Construction UK. So it'll help you to master the exact skills that local employers are looking for. In fact, many of the course elements have been designed to fill critical skills gaps identified by the industry, so you'll be in a prime position to find a job when you've completed your studies.

You'll be learning in a small group (max. 12), giving you plenty of opportunities for one-on-one support from your tutors and other experts. And you'll also benefit from a mentor from the industry, who will support you with your studies.

Some of the work will be delivered digitally, so you won't need to be in college every day. And you'll be putting your new skills into practice even before you graduate, as you'll benefit from a 45 day work placement in the industry.

You'll also benefit from numerous site visits and other industry-related trips, to places such as urban regeneration schemes, Manchester Airport and the new HS2 railway. You might even travel to France in your second year, to see the Notre Dame restoration, renewable energy schemes and other notable projects.

There are lots of other significant perks to this course, including a £300 bursary, extra opportunities to travel abroad as part of a student exchange programme, and even a free laptop worth £1500, with the latest 3D Cad Modelling Software (T&Cs apply). And best of all, you'll be entering into a talent pool that gives you direct exposure to potential employers.

As well as achieving a recognised qualification by the end of the course, you'll also have your CSCS Green Card (licence to practice) and a membership to a professional association.

In short, this is a fantastic opportunity if you have the talent, drive and ambition to make the most of it.



15

T LEVELS



From 2021, you'll be able to study for a Technical Level (T Level) qualification in Construction and Engineering through our Industry Excellence Academy.

T Levels are new two-year technical alternatives to A Levels. If you're already itching to get out into the workplace, our Level 3 T Level could be perfect, as it

combines classroom learning with an extended industry placement of at least 315 hours (approx. 45 days).

Our brand new Level 3 Construction T Levels in Design and Surveying and On Site Construction will be offered from September 2021.

UCEN
MANCHESTER
FIND YOUR FUTURE

DEGREE LEVEL UCEN MANCHESTER

Once you've completed one of our Level 3 Diplomas, you'll have the opportunity to progress onto a degree level qualification through our higher education partner - UCEN Manchester:

**LEVEL 4 CONSTRUCTION AND THE
BUILT ENVIRONMENT**

For more information or to apply,
visit ucenmanchester.ac.uk



CAREERS



CARPENTER/JOINER

As a carpenter or joiner, you'd use your skills in woodcraft to measure, cut and fit everything from floorboards and partition walls through to ornate staircases, roof joists and kitchens. It's a rewarding career, as you'd be able to see the fruits of your labour and make buildings safer, more beautiful places to live and work in.

AVERAGE SALARY: £25,000



PLUMBER

Being a plumber goes far beyond fixing a blocked sink; it requires an in-depth knowledge of a range of systems that make our homes and offices warm, safe and dry. You could choose to specialise in a certain area, such as boiler repair or bathroom plumbing, or be on call to fix everything from radiators to leaky pipes. Either way, you'd be in high demand.

AVERAGE SALARY: £29,000



ENGINEERING TECHNICIAN

As an engineering technician, you could put your problem solving skills to the test in fields such as electronics, software, quality control and manufacturing. On an average day, you might create technical drawings, carry out experiments or test products.

AVERAGE SALARY: £35,000

MEET THE TEAM

We believe that students generally learn best from tutors who have real-life experience of their subject. So you'll find that most of your tutors will have worked in the construction industry for several years before joining The Manchester College.



STEPHEN ADAMSON
Plumbing and Fire Sprinklers Tutor

Stephen has over thirty years' experience as a plumbing and heating engineer. During that time, he worked closely with the building industry, local authorities, and conservation and planning officers. He also spent time working on listed buildings, and fire sprinkler fitting and maintenance. Stephen recently graduated with a BA Honours in Education and Professional Studies, so is perfectly placed to share his extensive knowledge with students.

Stephen particularly enjoys teaching students about renewable technologies, such as solar thermal systems and ground source heat pumps. He was self-employed for 25 years, so can also talk to you about running your own business.



HEBA NIMER SABBBOUBEH
Construction and Built Environment Tutor

Heba has fifteen years' experience as a practicing Architect, designer and Project Manager in Palestine. She has worked for the Ministry of Education and Higher Education, Palestine Technical University along with work from private engineering company designing and supervising domestic buildings and sport centres.

She has a Masters in Construction Project Management with her PhD nearing completion.



GARY WALLWORTH
Carpentry and Joinery Tutor

Gary was named Joiner of the Year at the 2019 On The Tools Awards. He has an impressive professional background in site carpentry and is an expert bench joiner. Gary is heavily involved with Band of Builders – the construction workers' charity. He's also appeared on BBC TV programme 'The One Show', to judge viewers' own joinery tasks.

LOCATION

When you enrol on one of our Construction and Engineering courses, you'll benefit from some of the most technologically advanced training centres in the North West. You'll be working in simulated working environments with industry-standard equipment. We have 25 specialist construction workshops, including bespoke areas for scaffolding, refrigeration and fire sprinkler installation.



Openshaw Campus
Ashton Old Road
Openshaw
Manchester
M11 2WH



Wythenshawe Campus
Brownley Road
Wythenshawe
Manchester
M22 9UH

BUILDING EXCELLENCE



The Manchester College strives to deliver an exciting and innovative learning experience to all our students looking to learn new skills. We are committed to playing a pivotal role in shaping the learning of today and for the generations to follow.

In support of our commitment, The College, alongside Higher Education partner UCEN Manchester, is investing £140 million to transform and restructure our campus estate which are set to open throughout 2021 and 2022.

A powerful mix of new and redeveloped campuses, as a student you will enjoy exceptional, state-of-the-art study facilities alongside access to outstanding student support services. Our aim; to create a healthy, happy,

productive environment in which you can thrive as we encourage you to create a positive and prosperous future.

Our Construction and Engineering facilities will benefit directly from our investment. You'll be able to learn some trades in brand new workshops, including electrical testing, brickwork, plumbing, plastering, painting and decorating, carpentry and joinery. You'll also benefit from a multi-disciplinary area at our redeveloped Openshaw campus.

Thanks to the redevelopment, we're expanding and enhancing our current Centres of Excellence. This will allow us to remain at the cutting edge of industry standards, and give you even more opportunities to succeed.

WHAT OUR STUDENTS SAY



“I had been wanting to go to college for a while to change my career, but I didn’t think it would fit in with my other commitments. Surprisingly it has, because the College has been so supportive and now I get to follow my dreams.”

SARAYA COWAN

HOW TO APPLY

Applying to study at The Manchester College is really easy and can be done online via desktop, tablet or mobile.

Simply follow these eight steps and you’ll be on your journey to amazing in no time at all.

STEP 1

Visit tmc.ac.uk

STEP 2

Browse our range of courses and choose the course you’d like to apply for

STEP 3

Apply for the course using our application portal, making sure you complete all of the relevant information

STEP 4

Receive a conditional offer

STEP 5

Book to attend an Applicant and Parent Information Evening (16-18 year old students only)

STEP 6

Register to attending our New Student Welcome Day (16-18 year old students only)

STEP 7

Join us at enrolment on the date we specify on your invite (For 16-18 year old students applying for September this will be after you receive your results)

STEP 8

Start your journey to amazing

A photograph of two construction workers on a roof. One worker in the foreground is wearing a blue hard hat, a high-visibility yellow vest, and dark work clothes, using a hammer to work on wooden battens. Another worker is visible in the background, also in safety gear, working on a different part of the roof. The roof is partially covered with blue waterproofing membrane and wooden battens, with some red tiles already laid. A brick chimney is visible in the background.

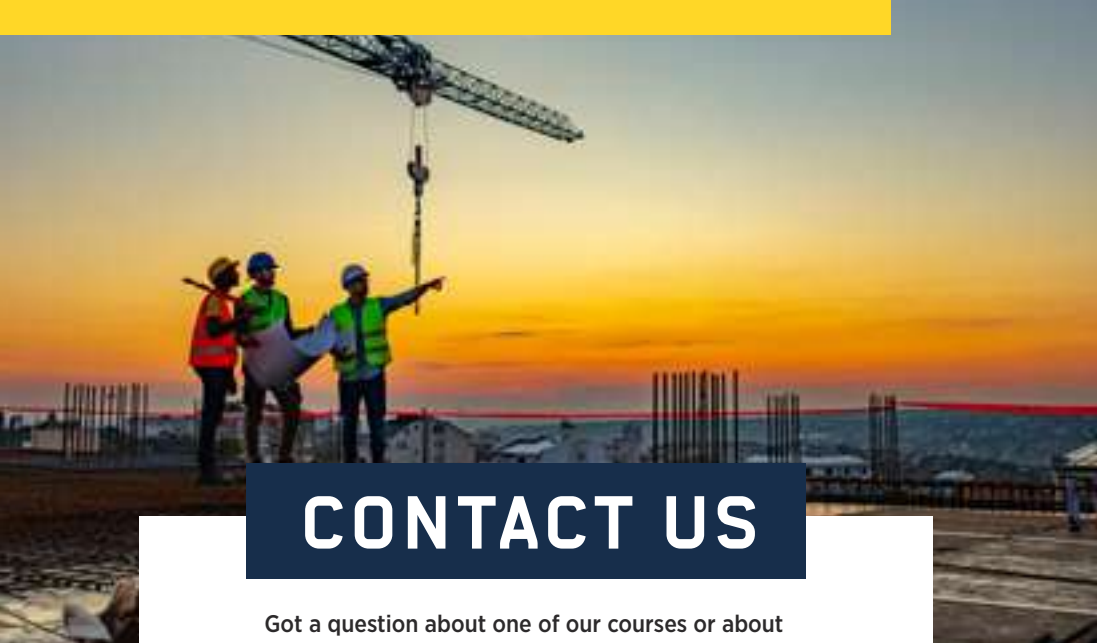
FIND OUT MORE **AND** **APPLY**

To find out more about The Manchester College and our Construction and Engineering department and to apply for one of our courses visit: tmc.ac.uk/construction-engineering

VISIT US

Join us at one of our Open Events throughout the year to learn more about our courses, visit the campus you could be studying at and tour our facilities, speak to our tutors, view demonstrations and work from current students and much more.


To find out when our next Open Events are taking place visit: tmc.ac.uk/events



CONTACT US

Got a question about one of our courses or about The Manchester College or just need to get in touch?

 ENQUIRIES@TMC.AC.UK

 03333 222 444



STAY IN TOUCH

Follow us on via our social media channels



The Manchester College



@TheMcrCollege



@TheMcrCollege



The
Manchester
College®
be amazing

The Manchester College is committed to equality of opportunity, non-discriminatory practices and supporting individual learners. This information is also available in a range of formats, such as large print, on request.